

Pressure Regulators Series MC

Port 1/4", 3/8", 1/2" NPTF
Modular

The Series MC pressure regulators are available with port 1/4", 3/8", 1/2" NPTF.

Relieving diaphragms are standard.
Non-Relieving and Fast-Response Relieving diaphragms are optional, as called out in the code key.

All versions can be panel mounted.



TECHNICAL SPECIFICATIONS

Construction	modular, compact, diaphragm type		
Materials	Aluminum Body, Buna-N Seals, Nylon-Grilamid Knob, Brass internals		
Port	NPTF	1/4"	3/8" 1/2"
Weight	lbs	.71	1.42 1.42
Pressure gauge port	1/8" NPTF		
Mounting	in-line wall or console mounting (in any position)		
Operating temperature	-5° C - 50° C, (23° F - 122° F), with Dew Point of air at least 2° C (4° F) below the min working temperature		
Finishing	Chromate treatment undercoat; Bodies - polyurethane enamel & oven-cured; Bowls - electrostatic coating of polyester epoxy & oven cured		

PNEUMATIC DATA

Inlet pressure	0 — 16 bar (0 - 232 psi)
Outlet pressure	0.5 — 10 bar or 0 — 4 bar (7.25 - 145 psi or 0 - 58 psi)
Nominal flow	see graph
Secondary pressure relieving	standard, Non-Relieving and Sensitive Control Relieving available

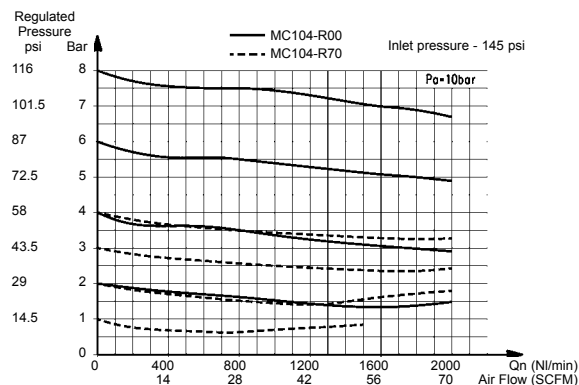
CODING EXAMPLE

MC	1	04	-	R	0	0	VS	TF
----	---	----	---	---	---	---	----	----

MC	SERIES
1	SIZE 1 = 1/4" 2 = 3/8" or 1/2"
04	PORTS: 04 = 1/4" NPTF 38 = 3/8" NPTF 02 = 1/2" NPTF
R	REGULATOR
0	OPERATING PRESSURE 0 = 0.5 - 10 bar (standard) (7.25 - 145 psi) 1 = 0 - 4 bar (0 - 58 psi) 2 = 0 - 2 bar (0 - 29 psi), 1/4" ONLY 7 = 0.5 - 7 bar (7.25 - 102 psi), 1/4" ONLY
0	DESIGN TYPE 0 = self-relieving 1 = non-relieving 5 = fast-response control, (metal-to-metal seat), relieving - 1/4" ONLY
VS	Blank = without high-relief flow VS = with high-relief flow, rapid reverse flow (1/4" units only)
TF	PORT TF = NPTF Blank = BSPP thread ports

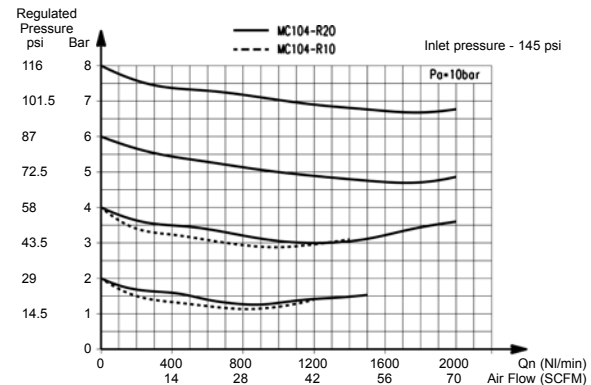
FLOW DIAGRAMS

MC104-R00TF and MC104-R70TF



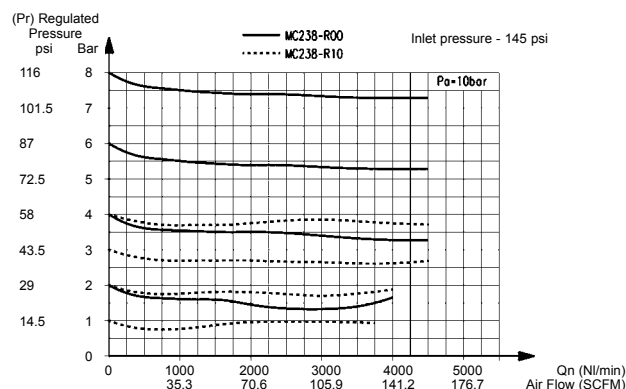
Pa = Inlet pressure Pr = Regulated pressure Qn = Flow

MC104-R20TF and MC104-R10TF



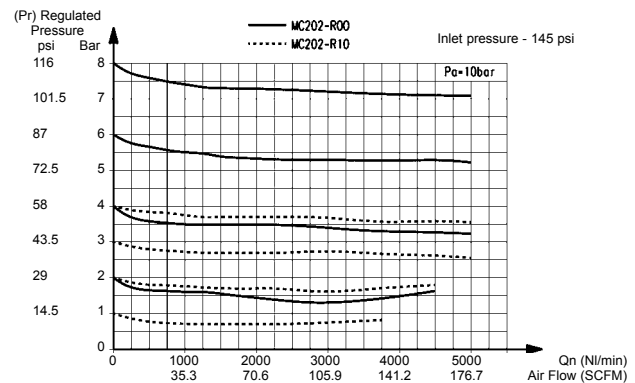
Pa = Inlet pressure Pr = Regulated pressure Qn = Flow

MC238-R00TF and MC238-R10TF



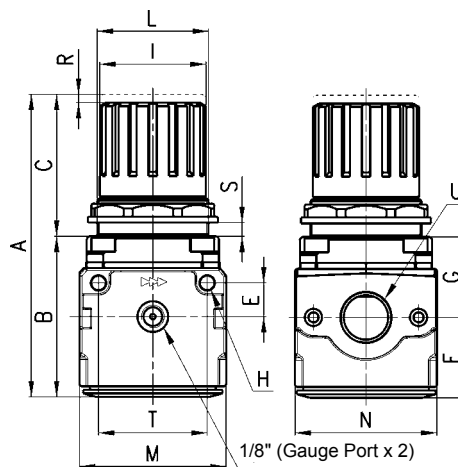
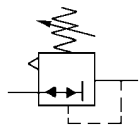
Pa = Inlet pressure Pr = Regulated pressure Qn = Flow

MC202-R00TF AND MC202-R10TF



Pa = Inlet pressure Pr = Regulated pressure Qn = Flow

Pressure regulators Series MC



DIMENSIONS (in inches)

Mod.	A	B	C	E	F	G	H	I	L	M	N	O	R	S	T	U (NPTF)
MC104-R00TF	3.701	2.205	1.496	.433	1.122	1.083	.177	1.102	M30x1.5	1.772	1.772	1.772	.118	.236	1.378	1/4"
MC238-R00TF	5.000	2.638	2.362	.551	1.339	1.378	.217	1.772	M47x1.5	2.441	2.441	2.362	.138	.354	1.811	3/8"
MC202-R00TF	5.000	2.638	2.362	.551	1.339	1.378	.217	1.772	M47x1.5	2.441	2.441	2.362	.138	.354	1.811	1/2"