

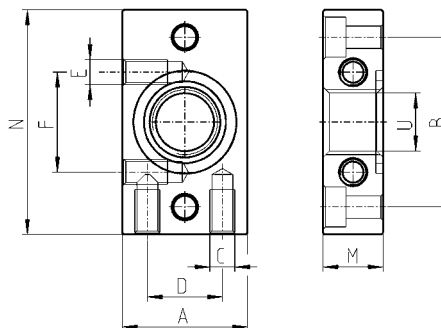
Mounting Brackets, Accessories and Kits - Series MC

Terminal flanges Series MC (Kit A)

The kit MC104-FL is supplied with: 1x left terminal flange; 1x right terminal flange; 4x screws M4x14; 2x O-Ring 2068.

Each of the kits MC202-FL and MC238-FL is supplied with: 1x left terminal flange; 1x right terminal flange; 4x screws M5x14; 2x O-Ring 3100.

Materials: enameled aluminium flanges, zinc-plated steel screws and NBR O-ring.



DIMENSIONS (in mm)

Mod.	A	B	C	D	N	M	U	size
MC104-FL	25	34	M5	15	45	12	G1/4	1
MC238-FL	35	44.5	M5	20	60	14	G3/8	2
MC202-FL	35	44.5	M5	20	60	14	G1/2	2
MC104-FLTF	25	34	M5	15	45	12	1/4" NPTF	
MC238-FLTF	35	44.5	M5	20	60	14	3/8" NPTF	
MC202-FLTF	35	44.5	M5	20	60	14	1/2" NPTF	

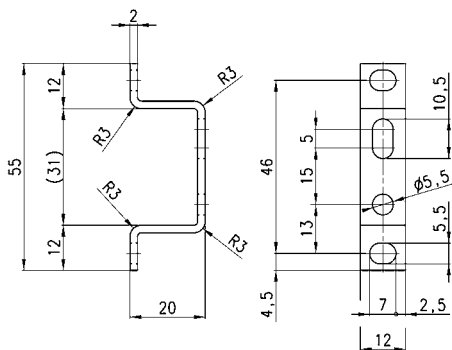
Mounting bracket Series MC (Kit B)

Mounting bracket for terminals 1/4, 3/8, 1.

The kit MC104-ST is supplied with:

- 2x terminal brackets
- 4x screws M5x10

Materials: zinc-plated steel brackets and screws.



Mod. (Dimensions in mm)

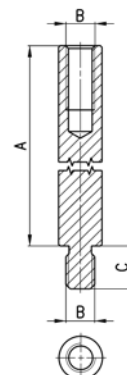
MC104-ST

Tie-rod for assembling, Series MC (Kit C)

The kit MC1-TMF is supplied with:
2 male/female tie-rods; 1 O-ring 2068.

The kit MC2-TMF is supplied with:
2 male/female tie-rods; 1 O-ring 3100.

Materials: nickel-plated steel tie-rods and NBR O-ring.



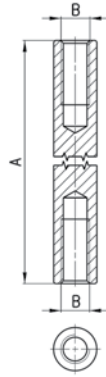
Mod. (dimensions in mm)	A	B	SW	size
MC1-TMF	45	M4	6	1
MC2-TMF	62	M5	6	2

Tie-rod for assembling, Series MC (Kit D)

The kit MC1-TFF is supplied with 2 female tie-rods.

The kit MC2-TFF is supplied with 2 female tie-rods.

Materials: nickel-plated steel tie-rods.



Mod. (Dimensions in mm)	A	B	size
MC1-TFF	44	M4	1
MC2-TFF	61	M5	2

Screw for assembling, Series MC (Kit E)

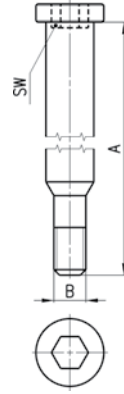
The kit MC1-VM is supplied with:

2 male screws; 1 O-ring 2068.

The kit MC2-VM is supplied with:

2 male screws; 1 O-ring 3100

Materials: zinc-plated steel screws and NBR O-ring.

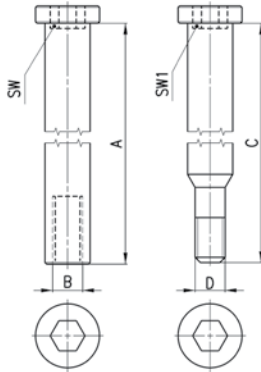


Mod. (Dimensions in mm)	A	B	SW	size
MC1-VM	48.5	M4	4	1
MC2-VM	65.5	M5	4	2

Screw for assembling, Series MC (Kit F)

The kit is supplied with: 2 male screws; 2 female screws; 1 O-ring (OR 2068 for MC1-VMF; OR 3100 for MC2-VMF).

Materials: zinc-plated steel male screws, nickel-plated steel female screws and NBR O-ring.



Mod. (dimensions in mm)	A	B	C	D	SW	SW1	size
MC1-VMF	42	M4	42.5	M4	4	4	1
MC2-VMF	59	M5	59.5	M5	4	4	2

Tie-rod for assembling, Series MC (Kit G)

4 screws - 4 washers/spacers - 2 o-rings

** See example at right. KIT "G" is to be used whenever there is a second regulator or filter-regulator in the same common assembly. KIT "G" allows the component to the left of the second regulator to be assembled onto the second regulator on its right side and also back into the component or tie-rod KIT to its left side. You must remove the outer plastic shell or cover of that middle component in order to assemble the bushings and cap-screws of Kit "G" both to the left and right.



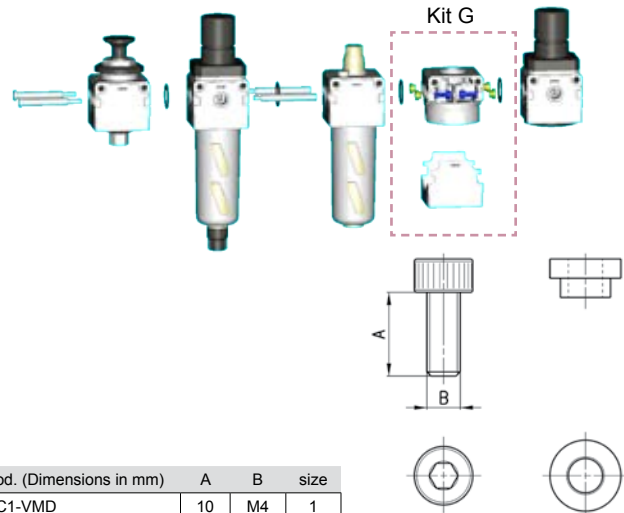
The kit MC1-VMD is supplied with:

4 screws M4X10; 4 spacers; 2 O-ring 2068.

The kit MC2-VMD is supplied with:

4 screws M5X12; 4 spacers; 2 O-ring 3100.

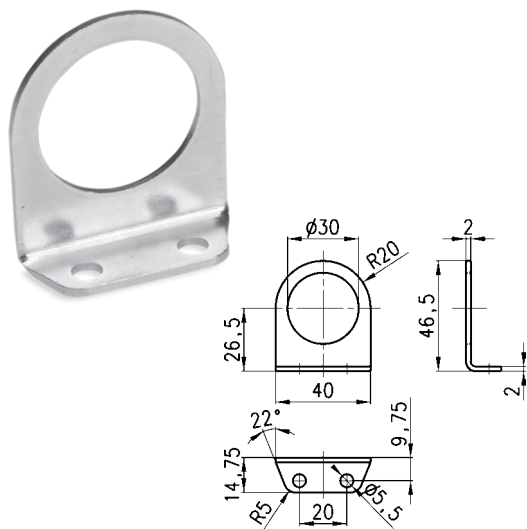
Materials: zinc-plated steel screws, brass spacers and NBR O-ring.



Mod. (Dimensions in mm)	A	B	size
MC1-VMD	10	M4	1
MC2-VMD	12	M5	2

Mounting bracket, Series MC-M-N-T

Mounting bracket for Regulators and Filter-Regulators (1/8 & 1/4) - zinc-plated steel bracket



Mod. (dimensions in mm)

C114-ST/1

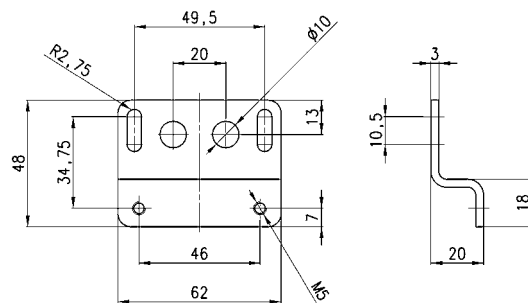
Mounting bracket, Series MC

Mounting bracket for MC238 and MC202



The kit is supplied with:
1 bracket; 2 screws M5X65

Materials: zinc-plated steel bracket and screws

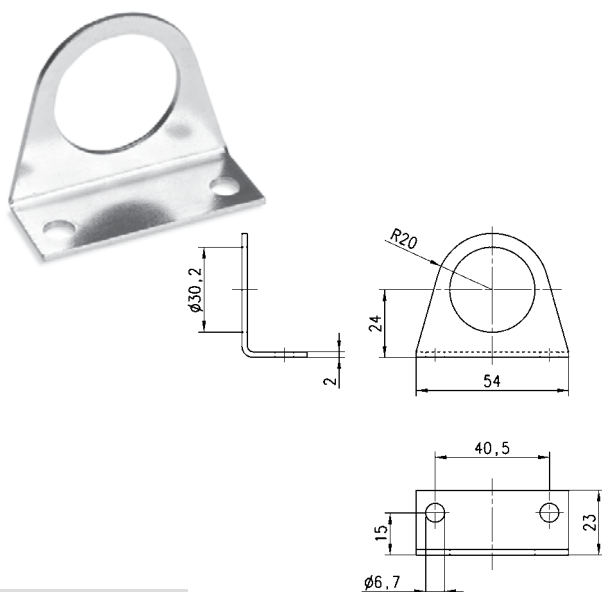


Mod. (dimensions in mm)

C238-ST/1

Mounting bracket, Series MC-M-N-T

Mounting bracket for Regulators and Filter-Regulators (1/8 & 1/4) - zinc-plated steel bracket

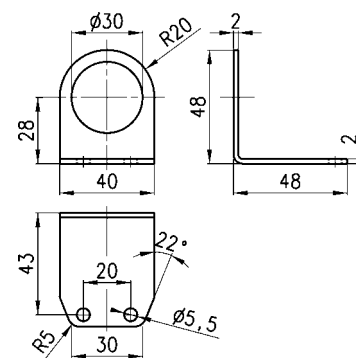


Mod. (dimensions in mm)

C114-ST

Mounting bracket, Series MC-M-N-T

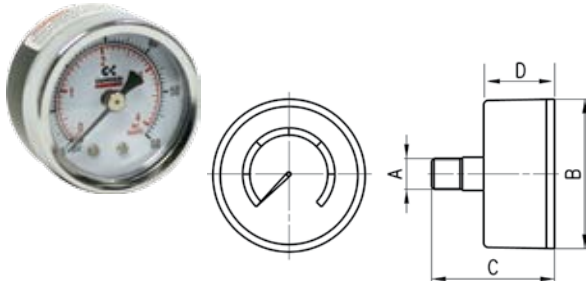
Mounting bracket for Regulators and Filter-Regulators, (1/8 & 1/4) - zinc-plated steel bracket



Mod. (dimensions in mm)

C114-ST/2

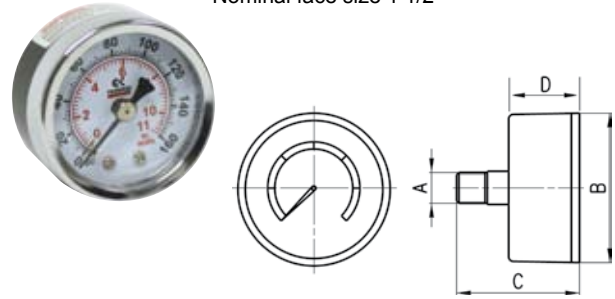
Pressure gauges
Mod. M043-P04TF (0 - 60 psi)
Nominal face size 1 1/2"



DIMENSIONS (in inches)

Mod.	A	B	C	D
M043-P04TF	1/8" NPTF	1.655	1.600	0.950

Pressure gauges
Mod. M043-P10TF (0 - 160 psi)
Nominal face size 1 1/2"

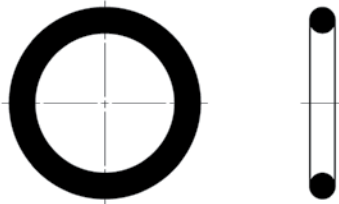


DIMENSIONS (in inches)

Mod.	A	B	C	D
M043-P10TF	1/8" NPTF	1.655	1.600	0.950

Assembly O-ring, Series MC

Assembly O-ring F-R-L-D
for MC104 mod. **458-33/1** (OR 2068)
for MC238 and MC202 mod. **80-26-11/4T**
(OR 3100)
(spare part only).



* spare parts only

Mod.	O-ring	For assembly
458-33/1	OR 2068	MC104
80-26-11/4T	OR 3100	MC238 - MC202 *
160-39-11/19	OR 3125	MX2
C401-F33	OR 3150	MX3