

Filter/Regulator Series MC

Port 1/4", 3/8", 1/2" NPTF

Modular with metal bowl guard and bayonet-type mounting

The filter regulators Series MC are available with port 1/4", 3/8", 1/2" NPTF.

They combine the features of the filters and regulators and have smaller overall dimensions than the two separate components.



TECHNICAL SPECIFICATIONS

Construction	compact modular with filtering element in HDPE - diaphragm type			
Materials	Body - Aluminum alloy, Bowl - Grilamid TR 55 (Nylon compound), Seals - Buna-N			
Port	NPTF:	1/4"	3/8"	1/2"
Condensate capacity	oz	1	2.4	2.4
Weight	lbs	.98	2.09	2.05
Pressure gauge port	1/8" NPTF			
Mounting	vertical in-line or wall-mounting			
Operating temperature	-5° C - 50° C, (23° F - 122° F), with Dew Point of air at least 2° C (4° F) below the min working temperature			
Porosity of filtering element	25 µm standard - 5 µm upon request			
Draining of condensate	manual - semi-automatic standard, optional drains available, see code key			
Finish	Chromate treatment undercoat; Bodies - polyurethane enamel & oven-cured; Bowls - electrostatic coating of polyester epoxy & oven cured			

PNEUMATIC DATA

Inlet pressure	0.3 - 16 bar, (with depressurizing drain P Max. of 10 bar) : 4.25 - 232 psi, (P Max 145 psi w/ depressurizing drain) - "Spitter-Type" 1.5 - 15 bar for Full Automatic float drain, (22 - 220 psi), 3/8" & 1/2" models only
Outlet pressure	0.5 — 10 bar (7.25 - 145 psi), see code key for optional spring ranges
Nominal flow	see graph
Secondary pressure relieving	standard

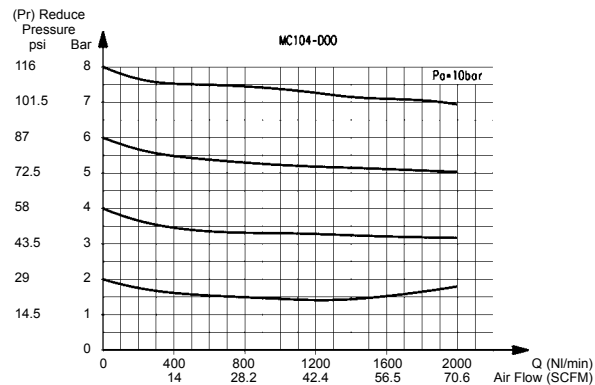
CODING EXAMPLE

MC	1	04	-	D	0	0	-	TF
----	---	----	---	---	---	---	---	----

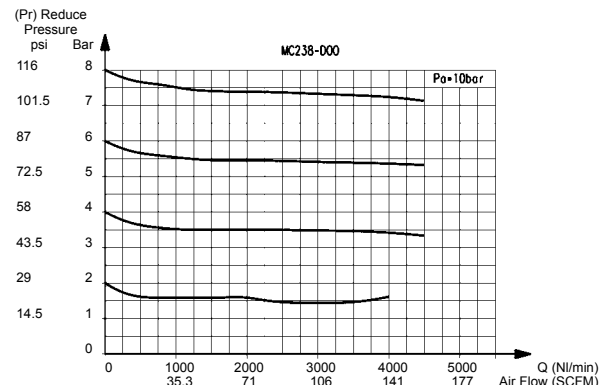
MC	SERIES		
1	SIZE 1 = 1/4" NPTF 2 = 3/8", 1/2" NPTF		
04	port 04 = 1/4" NPTF 38 = 3/8" NPTF 02 = 1/2" NPTF		
D	FILTER-REGULATOR		
0	FILTERING ELEMENT 0 = 25µm 1 = 5µm		
0	DRAINING OF CONDENSATE 0 = semiautomatic, self-relieving 1 = semiautomatic, non-relieving 3 = automatic, self-relieving (only for 3/8" and 1/2") 4 = depressurization 5 = depressurization, orifice filter, self-relieving 8 = port 1/8"		
	OPERATING PRESSURE (bar) Blank = 0.5 - 10 (7.25 - 145 psi) 2 = 0 - 2 (only 1/4") (0 - 29 psi) 4 = 0 - 4 (0 - 58 psi) 7 = 0.5 - 7 (only 1/4") (7.25 - 103 psi)		
TF	PORT TF = NPTF Blank = BSPP thread ports		

FLOW DIAGRAMS

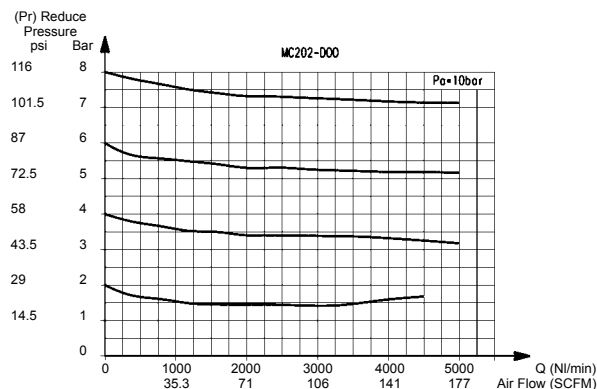
MC104-D00TF



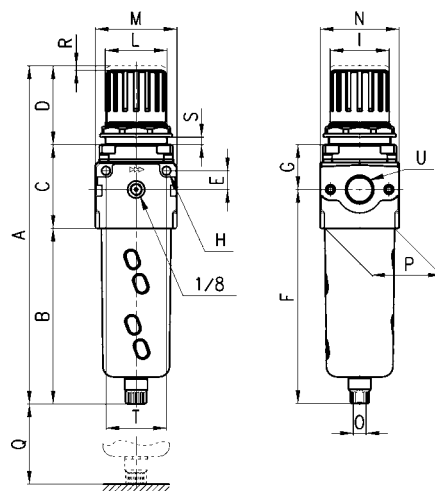
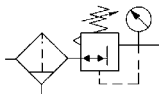
MC238-D00TF



MC202-D00TF



Filter regulators Series MC



DIMENSIONS (in inches)

Mod.	A	B	C	D	E	F	G	H	I	L	M	N	O	P	Q	R	S	T	NPTF U
MC104 -D00TF	7.500	4.016	2.047	1.496	.433	4.980	1.083	.177	1.102	M30x1.5	1.772	1.772	1/8	1.457	2.283	.118	.024	1.378	1/4
MC238 -D00TF	10.098	5.236	2.520	2.323	.551	6.378	1.378	.217	1.772	M47x1.5	2.441	2.323	1/8	2.087	2.835	.138	.035	1.811	3/8
MC202 -D00TF	10.098	5.236	2.520	2.323	.551	6.378	1.378	.217	1.772	M47x1.5	2.441	2.323	1/8	2.087	2.835	.138	.035	1.811	1/2