

Filters Series MC

Port 1/4", 3/8", 1/2" NPTF

Modular with metal bowl guard and bayonet-type mounting

The Series MC filters are available with port 1/4", 3/8" or 1/2" NPTF.

The bowls of these filters are made of Nylon - Grilamid with an aluminum bowl guard and have a condensate drain valve in five (5) different options.

On request it is possible to order filters with filtering elements in different filtration ranges than those listed standard in the code key.



TECHNICAL SPECIFICATIONS

| | | | | |
|-------------------------------|--|------|------|------|
| Construction | compact modular with filtering element in HDPE | | | |
| Materials | Body - Aluminum alloy, Bowl - Grilamid TR 55 (Nylon compound), Seals - Buna-N, internals in brass | | | |
| Port | NPTF | 1/4" | 3/8" | 1/2" |
| Max condensate capacity | oz | 1 | 2.43 | 2.43 |
| Weight | lbs | .75 | 1.58 | 1.52 |
| Mounting | vertical in-line or wall-mounting | | | |
| Operating temperature | -5° C - 50° C, (23° F - 122° F), with Dew Point of air at least 2° C (4° F) below the min working temperature | | | |
| Porosity of filtering element | 25 µm & 5 µm upon request | | | |
| Draining of condensate | manual - semi automatic standard, other options available in code key | | | |
| Finishing | Chromate treatment undercoat; Bodies - polyurethane enamel & oven-cured; Bowls - electrostatic coating of polyester epoxy & oven cured | | | |

PNEUMATIC DATA

| | |
|--------------------|---|
| Operating pressure | 0.3 - 16 bar, (with depressurizing drain P Max. of 10 bar) : 4.25 - 232 psi, (P Max 145 psi w/ depressurizing drain) - 1.5 - 1.5 - 12 bar for Full Automatic float drain, (22 - 175 psi), 3/8" & 1/2" models only |
| Nominal flow | see graph |

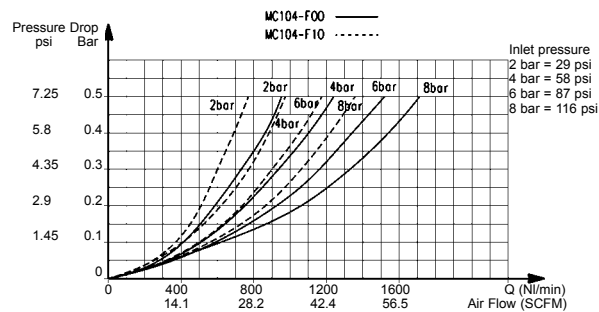
CODING EXAMPLE

| | | | | | | | |
|----|---|----|---|---|---|---|----|
| MC | 1 | 04 | - | F | 0 | 0 | TF |
|----|---|----|---|---|---|---|----|

| | |
|----|--|
| MC | SERIES |
| 1 | SIZE 1 = 1/4" 2 = 3/8" or 1/2" |
| 04 | PORTS: 04 = 1/4" NPTF 38 = 3/8" NPTF 02 = 1/2" NPTF |
| F | FILTER |
| 0 | FILTERING ELEMENT 0 = 25µm 1 = 5µm |
| 0 | DRAINING OF CONDENSATE 0 = normal - semiautomatic 3 = Fully automatic, Float-Drain, 3/8" & 1/2" 4 = depressurization, "Spitter-Type", 1/4" ONLY 5 = depressurization, protected, "Spitter-Type" w/ filtered drain orifice 8 = port 1/8" female, free-flow |
| TF | PORT TF = NPTF Blank = BSPP thread ports |

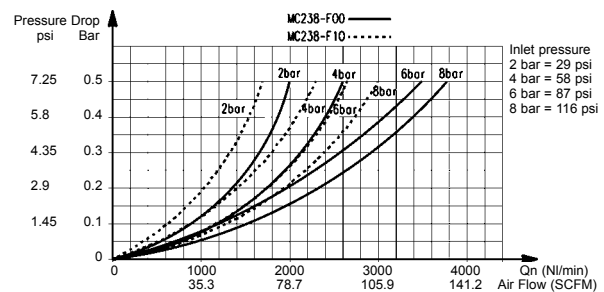
FLOW DIAGRAMS

MC104-F00TF and MC104-F10TF - 1/4" Models



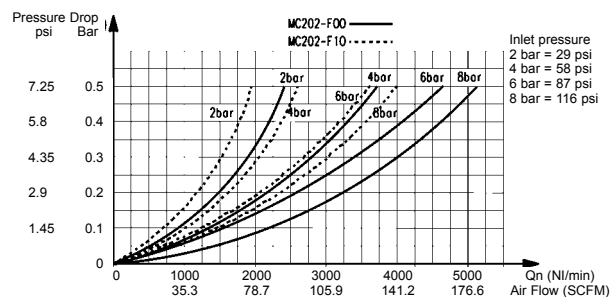
Pa = Inlet pressure
 ΔP = Pressure Drop
 Qn = Flow

MC238-F00TF and MC238-F10TF - 3/8" Models



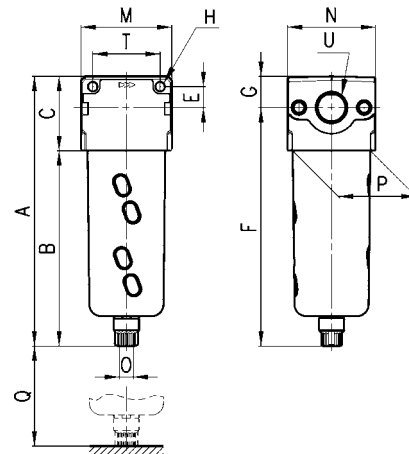
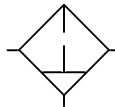
Pa = Inlet pressure
 ΔP = Pressure Drop
 Qn = Flow

MC202-F00TF and MC202-F10TF - 1/2" Models



Pa = Inlet pressure
 ΔP = Pressure Drop
 Qn = Flow

Filters Series MC



DIMENSIONS (in inches)

| Mod. | A | B | C | E | F | G | H | M | N | O | P | Q | T | U |
|-------------|-------|-------|-------|------|-------|------|------|-------|-------|-----|-------|-------|-------|-----|
| MC104-F00TF | 5.630 | 4.016 | 1.614 | .433 | 4.980 | .650 | .177 | 1.772 | 1.772 | 1/8 | 1.457 | 2.23 | 1.378 | 1/4 |
| MC238-F00TF | 7.244 | 5.236 | 2.008 | .551 | 6.417 | .827 | .217 | 2.441 | 2.362 | 1/8 | 2.087 | 2.835 | 1.811 | 3/8 |
| MC202-F00TF | 7.244 | 5.236 | 2.008 | .551 | 6.417 | .827 | .217 | 2.441 | 2.362 | 1/8 | 2.087 | 2.835 | 1.811 | 1/2 |