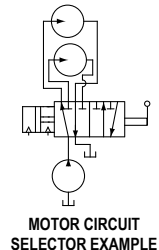
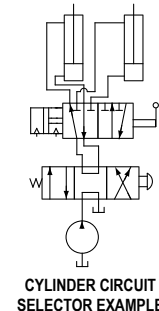
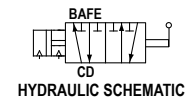
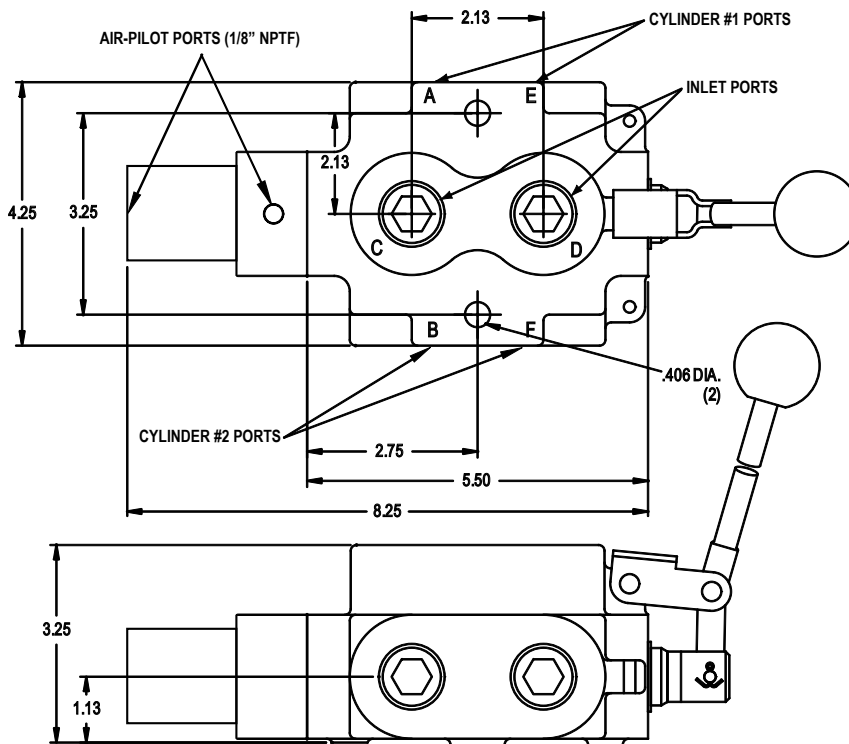




Installation Guide

How-To

The Trausch Dynamics model 40A is an air-actuated 6-way 2-position double selector valve. This valve will divert the flow going to two separate hydraulic circuits. For example two double acting cylinders or two reversible hydraulic motors can be operated by one four-way valve. When the double selector spool is pushed in by supplying air to the top 1/8" air-pilot port, the C and D ports (top ports) are connected to the A and E ports (right ports). When the selector spool is pulled out by supplying air to the rear 1/8" air-pilot port, the C and D ports are connected to the B and F ports (left ports). Additionally, the valve can be operated manually by using the provided handle assembly. It is not required to install the handle assembly for the valve to function pneumatically.



Warning

To avoid serious injury or death:

- Park the equipment on level ground, apply the parking brake, disengage running equipment, lower all implements to the ground, shut off the engine and remove the key.
- Read and comprehend the tractor and implement or attachment owner's manual before installing or operating this valve.
- Always wear safety glasses and proper personal protection equipment before and during installation of this valve.
- Pressurized hydraulic fluid can cause serious injury. The forces created can penetrate skin. Relieve all system pressure before disconnecting lines. Be sure that the equipment is in a "zero-energy" state. Before applying pressure and flow to this valve, be sure that all connections are tight and the hydraulic hoses are not damaged in any way. Hydraulic fluid can leak from pin-holes and cause injury. Visually inspect all connections and never use your hands or fingers to inspect for leaks. If you are injured by injection of hydraulic fluid, see a doctor. Failure to do so may cause serious injury or death.