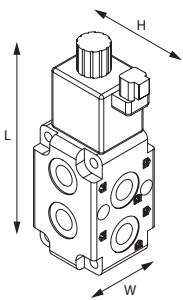


# SelectPLUS 12 & 24 GPM Diverter Valve Kits

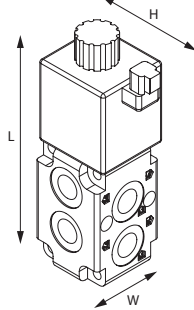


## Technical Information

### Dimensions



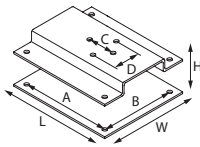
SelectPLUS 12 GPM  
L = 7.63"  
W = 2.60"  
H = 3.25"



SelectPLUS 24 GPM  
L = 8.63"  
W = 2.60"  
H = 3.50"

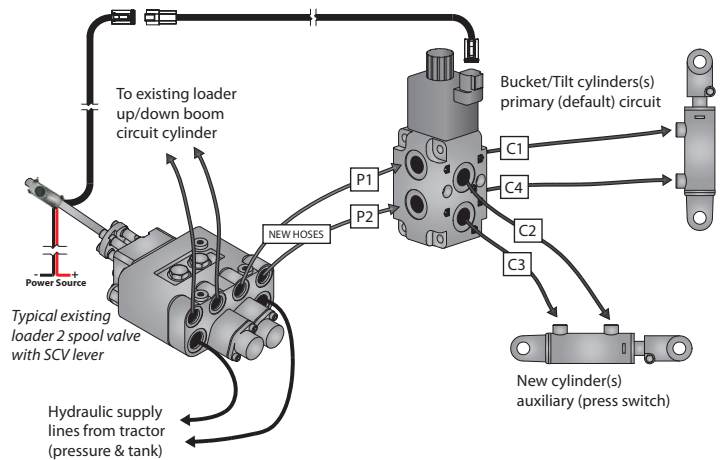


Switch  
L = 2.63"  
W = 1.08"  
Depth = 0.75"



Mounting Bracket  
L = 7.00"  
W = 6.00"  
H = 3.50" (Maximum)  
A = 6.00"  
B = 5.00"  
C = 1.80"  
D = 1.80"

### Application Example



### Hydraulic Schematic

