

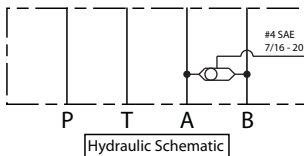
D05 Shuttle Sandwich

9505575

• Utilize this space saving D05 shuttle sandwich to eliminate external plumbing in hydraulic circuits. • This valve is commonly used for load-sense applications and pressure-released hydraulic brakes.

Specifications

- #4 SAE O-Ring Port (7/16 - 20)
- Aluminum Construction (6061)
- 3500 PSI Maximum Operating Pressure
- 2 GPM Maximum Flow On Load-Sense/Brake Release Port
- Steel Ball & Steel Seats For Tough Dependable Performance
- Low Internal Leakage - 5 Drops Per Minute Maximum
- Buna-N Seals
- Filter Oil To 25 Micron Or Better
- No Mounting Restrictions



| Stock Number | Valve Pattern | Port Size | Product Wt. | Ship Wt. |
|--------------|---------------|------------------|-------------|----------|
| 9505575 | D05 | #4 SAE (7/16-20) | 2.39 | 4.00 |

