

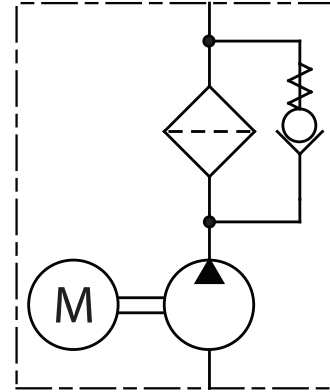
Oil Transfer Cart

9504660

• For use with Clean Oil • Designed to Use for Transferring Oil to Storage Containers • Transferring Filtered Oil to a Machine • Pre-Filtering New Oil • Flushing Repaired or New Systems • Filtering Contaminated Systems • 1 HP Totally Enclosed Fan Cooled Motor (TEFC) • Single Phase Motor High Efficiency Pressure-Balanced Aluminum Gear Pump Built • On a Two Wheeled Cart • 10 Micron Filter • 6.2 GPM Flow • (2) 10' Whip Hoses with 18" Suction and Return Tubes • 6' 110VAC Cord • 225 PSI Max Pressure

Specifications

- 1 HP Totally Enclosed Fan Cooled Motor (TEFC)
- Single Phase Motor High Efficiency Pressure-Balanced Aluminum Gear Pump Built
- On a Two Wheeled Cart
- 10 Micron Filter
- 6.2 GPM Flow
- (2) 10' Whip Hoses with 18" Suction and Return Tubes
- 6' 110VAC Cord
- 225 PSI Max Pressure
- For use with Clean Oil
- Other Configurations Available Upon Request



Hydraulic Schematic

Stock Number	HP	GPM	Filter	Max Pressure	Ship Wt.
9504660	1	6.2	10 Micron	225 PSI	160

