

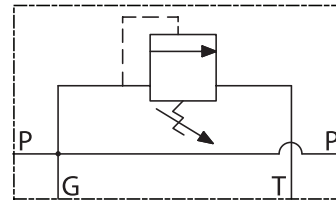
# 80 GPM Relief Valve

9502774



## Technical Information

- Trausch Dynamics • Pilot-Operated Spool-Type Hydraulic Relief Valves
- Intended For Use as a Pressure Limiting Device in a Hydraulic Circuit
- #20 SAE O-Ring Ports Pressures & Tank • #6 SAE O-Ring Gauge Port (Plugged) • Preset at 3000 PSI
- Pressure Adjustment is 1/4" Hex Allen Head (Located Under Threaded Cap) • Body Color is Silver • Body Material is Aluminum
- Buna N Seals • (2) 1/4-20 UNC Mounting Holes Located On Rear • No Mounting Restrictions



Hydraulic Schematic

Stock Number	Max GPM	P & T Ports	Gauge Port	PSI Range	Dimensions	Ship Wt.
9502774	80 GPM	#20 SAE O-Ring	#6 SAE O-Ring	1200 - 3500 PSI	3.0" x 3.0" x 8.6"	5.00
Accessories						
1213976	Gauge Port Adapter, #6 SAE x 1/4" Female NPTF, Straight					0.10
1218161	Gauge Port Adapter, #6 SAE x 1/4" Female NPTF, 90°					0.26
2312339	Gauge Port Diagnostic Tip, #6 SAE x North American Diagnostic					0.15

