

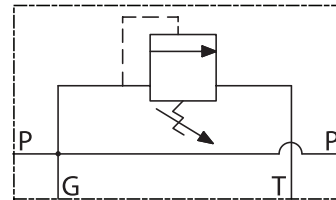
# 30 GPM Relief Valve

9502247



## Technical Information

- Trausch Dynamics • Pilot-Operated Spool-Type Hydraulic Relief Valves
- Intended For Use as a Pressure Limiting Device in a Hydraulic Circuit
- #12 SAE O-Ring Ports Pressures & Tank • #10 SAE O-Ring Gauge Port (Plugged) • Preset at 3000 PSI
- Pressure Adjustment is 3/16" Hex Allen Head (Located Under Threaded Cap) • Body Color is Silver • Body Material is Aluminum
- Buna N Seals • (2) 1/4-20 UNC Mounting Holes Located On Rear • No Mounting Restrictions



Hydraulic Schematic

Stock Number	Max GPM	P & T Ports	Gauge Port	PSI Range	Dimensions	Ship Wt.
9502247	30 GPM	#12 SAE O-Ring	#10 SAE O-Ring	1500 - 3000 PSI	2.5" x 2.5" x 5.32"	2.50
<b>Accessories</b>						
1214074	Gauge Port Adapter, #10 SAE x 1/4" Female NPTF, Straight					0.12
1210346	Gauge Port Adapter, 1/4" Male NPTF x 1/4" Female NPTF, 90°					0.14
2312333	Gauge Port Diagnostic Tip, 1/4" Male NPTF x North American Diagnostic					0.15

