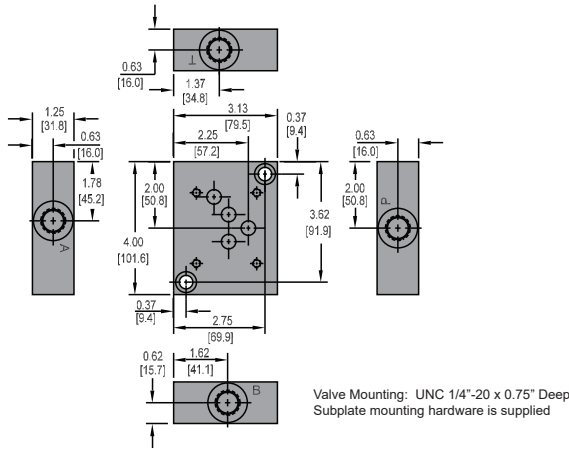
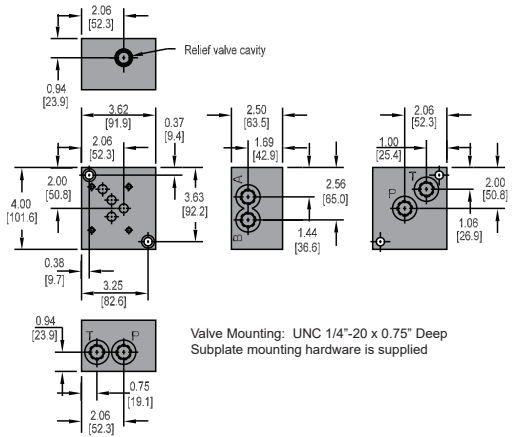


## D05 Subplates



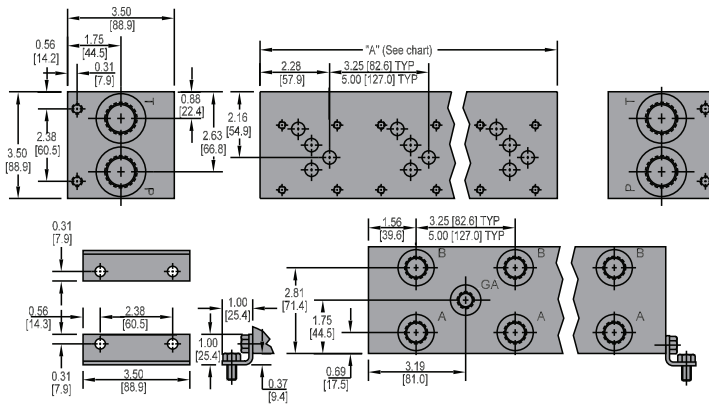
## D05 Subplates With Relief Cavity



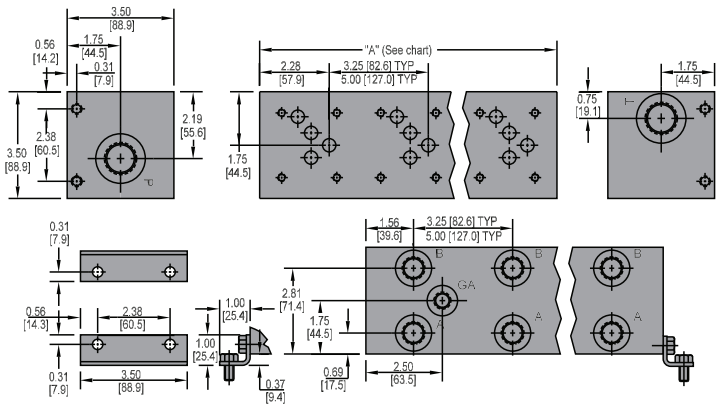
Stock Number	Port Threads	Ship Wt.
7068256	1/2" NPTF	3
7068255	#8 SAE	3

Stock Number	Port Threads	Ship Wt.
7068258	1/2" NPTF	5
7068257	#8 SAE	5

## D05 Parallel Circuit Manifolds



## D05 Series Circuit Manifolds



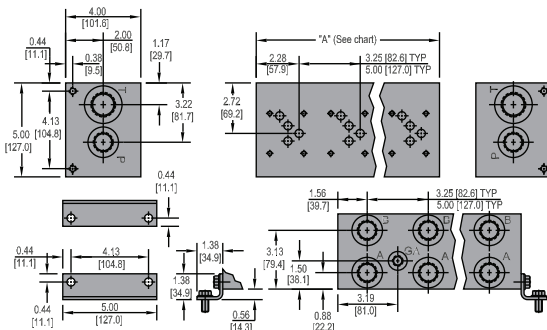
Stock Number	Number Of Valve Stations	Relief Cavity	P & T Port Threads	A & B Port Threads	Gauge Port Thread	A	Ship Wt.
7068295	1	No	#12 SAE	#8 SAE	N/A	3.25	5
7068296	1	Yes	#12 SAE	#8 SAE	N/A	4.50	6
7068297	2	No	#12 SAE	#8 SAE	#6 SAE	6.50	9
7068298	2	Yes	#12 SAE	#8 SAE	#6 SAE	6.50	9
7068299	3	No	#12 SAE	#8 SAE	#6 SAE	9.75	12
7068300	3	Yes	#12 SAE	#8 SAE	#6 SAE	9.75	12
7068363	4	No	#12 SAE	#8 SAE	#6 SAE	13.00	16
7068364	4	Yes	#12 SAE	#8 SAE	#6 SAE	13.00	16

Stock Number	Number Of Valve Stations	Relief Cavity	P & T Port Threads	A & B Port Threads	Gauge Port Thread	A	Ship Wt.
7068294	2	No	#12 SAE	#8 SAE	#6 SAE	6.50	9
7068292	2	Yes	#12 SAE	#8 SAE	#6 SAE	6.50	9

\*Series manifolds available in up to 4 stations. Please call for availability.

\*Parallel manifolds available in up to 21 stations. Please call for availability.

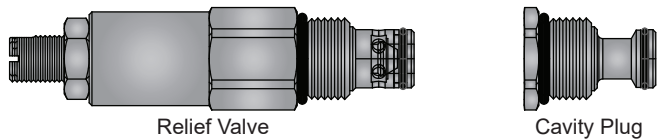
## D05 High Flow Parallel Circuit



Stock Number	Number Of Valve Stations	Relief Cavity	P, A, B Port Threads	T Port Threads	Gauge Port Thread	A	Ship Wt.
7068289	1	Yes	#12 SAE	#16 SAE	N/A	4.50	9

\*High flow parallel manifolds available in up to 21 stations. Please call for availability.

## Relief Valve & Cavity Plug



Stock Number	Description	Ship Wt.
7010969	Relief Valve, 100-4000 PSI Adj. Range, 20 GPM Max, C10-2	0.58
7014041	Cavity Plug, Fits Into Relief Cavity, C10-2	0.07

## D05 O-Ring



Stock Number	Description	Ship Wt.
3001490	90 Durometer O-Ring For D05 Valves	0.01