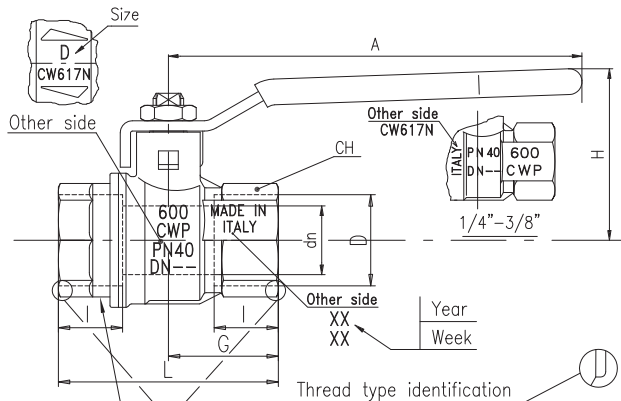
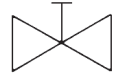


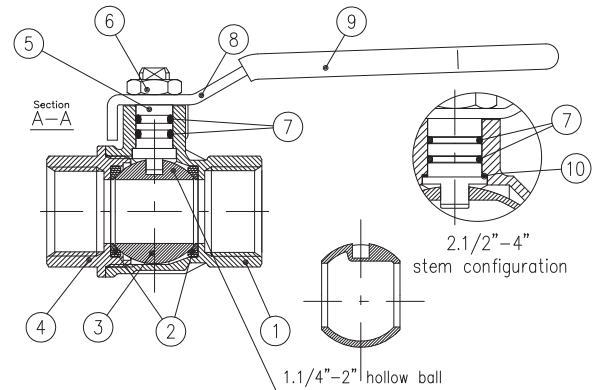
Ball Valve, Series 2940

These valves are constructed of an electrolytic nickel-plated brass body, a steel handle, a hardened chrome-plated brass ball, and a teflon seat. These valves are suitable for industrial, pneumatic, hydraulic, and various domestic installations. Among the various types of compounds which can be transported through these valves are steam, gasoline, fuel, oils, kerosene, acids, and compressed air.



ETCHING:

- 1/4"–1/2" → S95 c_{US} c_{US} 5G <FMD>400WP Δ 1/2 PSI CGA3.16
 3/4"–1" → S95 c_{US} c_{US} 5G <FMD>400WP Δ 1/2 PSI 125G CGA3.16
 1.1/4"–2" → S95 c_{US} c_{US} 5G <FMD>400WP CGA3.16



Flow Rate (GPM) in gallons per minute of H2O determined with a pressure drop of 1 psi

DIMENSIONS (in inches)									
Mod.	D (NPT)	DN	I	L	G	A	H	CH	Flow Rate (GPM)
2940 1/4PT	1/4"	0.314	0.472	1.771	0.885	3.228	1.563	0.787	4
2940 3/8PT	3/8"	0.393	0.472	1.771	0.885	3.228	1.563	0.787	6
2940 1/2PT	1/2"	0.590	0.610	2.322	1.161	3.937	1.695	0.984	18
2940 3/4PT	3/4"	0.787	0.669	2.519	1.259	4.724	1.988	1.220	30
2940 1PT	1"	0.984	0.826	3.188	1.594	4.724	2.153	1.574	50
2940 1 1/4PT	1-1/4"	1.259	0.905	3.661	1.83	6.220	2.988	1.929	75
2940 1 1/2PT	1-1/2"	1.574	0.905	4.015	2.007	6.220	3.236	2.125	110

MATERIALS

Part Description	Qty	Material	Standard
1 Sand blasted, nickel-plated body	1	CW617N	EN12165
2 Seat	2	PTFE	
3 Chrome-plated ball	1	CW617N	EN12165
4 Sand blasted, nickel-plated end cap	1	CW617N	EN12165
5 Nickel-plated stem, O-ring design	1	CW617N	EN12164
6 Geomet® plated steel nut	1	CB4FF	EN10263/2
7 O-Ring	2	FPM	
8 Geomet® plated steel handle up to 2"	1	DD11	EN10111
9 Yellow dipped coating (RAL 1028)	1	PVC	
10 Washer	1	PTFE	