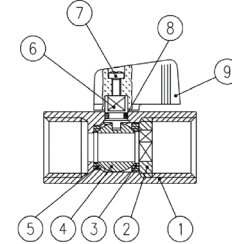
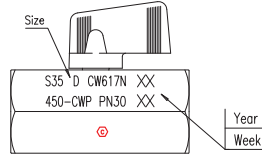
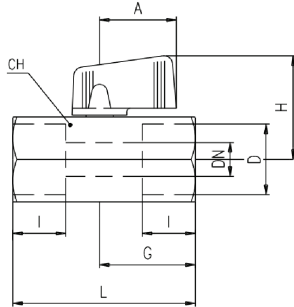
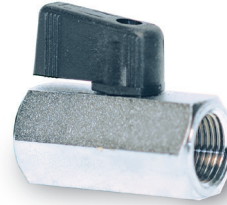


Mini Ball Valve, Series 2930 N (Female-Female thread ports)

These valves are constructed of all chrome-plated, brass body, hardened chrome-plated brass ball, teflon seat, and light weight plastic handle.

Kv = Flow coefficient in M3/h → 100kPa differential pressure (DP 14.5 psi)



**DIMENSIONS (in inches)**

Economical Ball Valves (chrome-plated, brass body)											
Mod.	D (NPT)	DN	I	L	G	A	H	CH	Kv	Kg	PSI
2930 N-1/8PT	1/8"	0.236	0.354	1.712	0.905	0.885	1.220	0.826	4.6	0.11	450
2930 N-1/4PT	1/4"	0.314	0.472	1.712	0.905	0.885	1.220	0.826	5.7	0.11	450
2930 N-3/8PT	3/8"	0.314	0.472	1.712	0.905	0.885	1.220	0.826	5.7	0.11	450
2930 N-1/2PT	1/2"	0.393	0.610	2.106	1.102	0.885	1.299	0.984	9.4	0.11	450

**MATERIALS**

Part Description	Qty	Material	Standard
1 Sand blasted chrome-plated body	1	CW617N	EN12164
2 Unplated retainer nut	1	CW617N	EN12164
3 Retainer seat	1	PTFE	
4 Chrome-plated ball	1	CW617N	EN12164
5 Body Seat	1	PTFE	
6 Unplated stem	1	CW617N	EN12164
7 Zinc-plated screw	1	CB4FF	EN10263/2
8 O-Ring	1	FPM	
9 Black Handle (RAL 9005)	1	Nylon glass filled 30%	