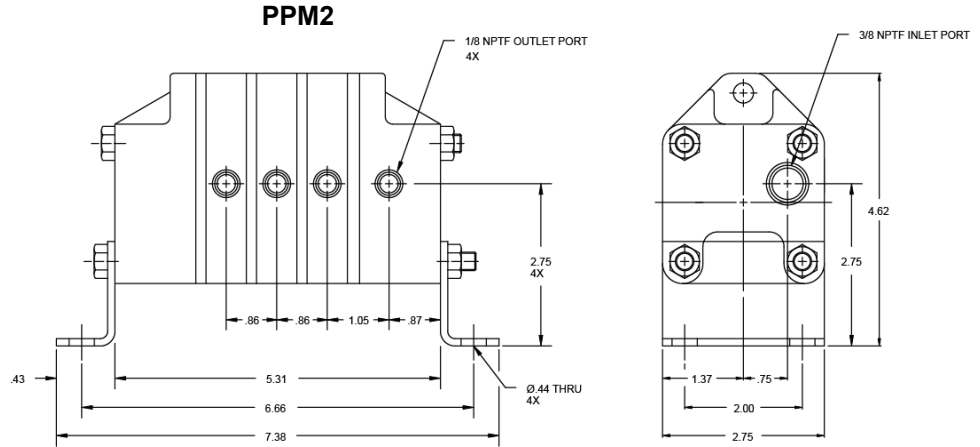
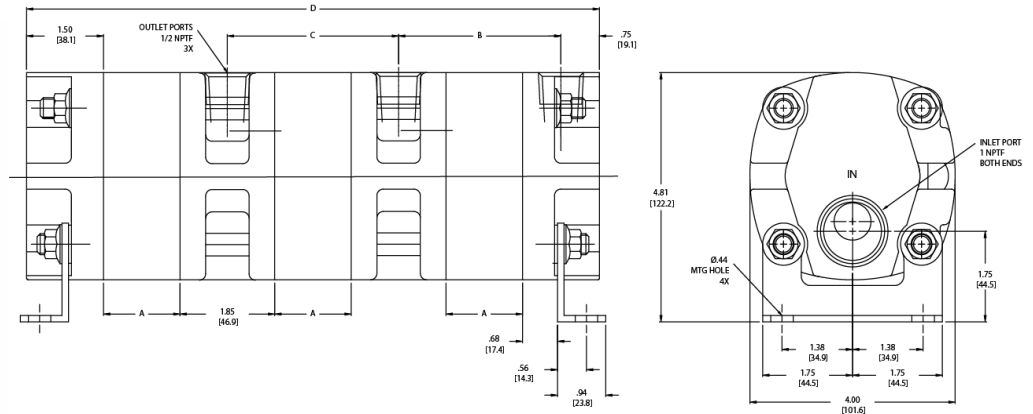


**P Series, Equal Flow Multi-Sections**

Equal flow multi-section units consist of several identical, individual sections coupled together to divide a flow from a common pump source into three or more equal flows. Each set of gear and shaft assemblies are individually supported in needle bearings.



**P23-(57-60) & P27-(57-60)**



MODEL	NUMBER OF SECTIONS	TOTAL MAX. INLET (GPM)	0 PSI DISP. PER SECT. GAL./REV.	SLIP GPM/100 PSI	MAXIMUM INTERMITTENT PSI	MAXIMUM CONTINUOUS PSI	BOLT TORQUE Ft. Lb.	A	B	C	D	MAX. DIFF. BETWEEN SECT. (PSI)
PPM2	4	7.0	0.00047	0.026	2000	1500	13-17	-	-	-	-	1000
P23-60	3	31.5	0.00304	0.068	2000	1500	24-31	0.715	2.39	2.56	8.83	1000
P23-59	4	42.0	0.00304	0.068	2000	1500	24-31	0.715	2.39	2.56	11.39	1000
P23-58	5	52.5	0.00304	0.068	2000	1500	24-31	0.715	2.39	2.56	13.95	1000
P23-57	6	63.0	0.00304	0.068	2000	1500	24-31	0.715	2.39	2.56	16.51	1000
P27-60	3	66.0	0.00633	0.113	2000	1500	24-31	1.490	3.16	3.33	11.16	1000
P27-59	4	88.0	0.00633	0.113	2000	1500	24-31	1.490	3.16	3.33	14.49	1000
P27-58	5	110.0	0.00633	0.113	2000	1500	24-31	1.490	3.16	3.33	17.82	1000
P27-57	6	132.0	0.00633	0.113	2000	1500	24-31	1.490	3.16	3.33	21.15	1000

**WARNING:** The specifications/application data shown in our catalogs and data sheets are intended only as a general guide for the product described (herein). Any specific application should not be undertaken without independent study, evaluation, and testing for suitability.