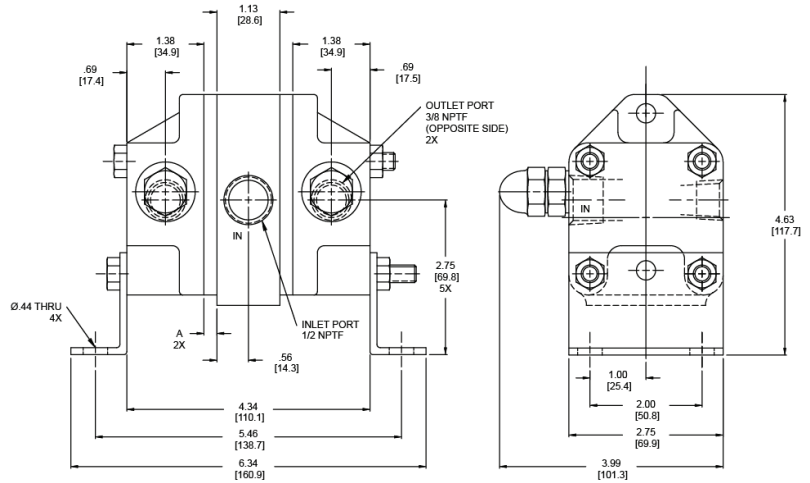
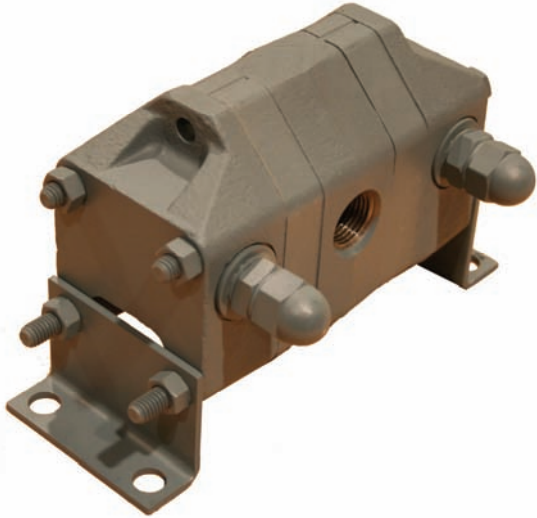


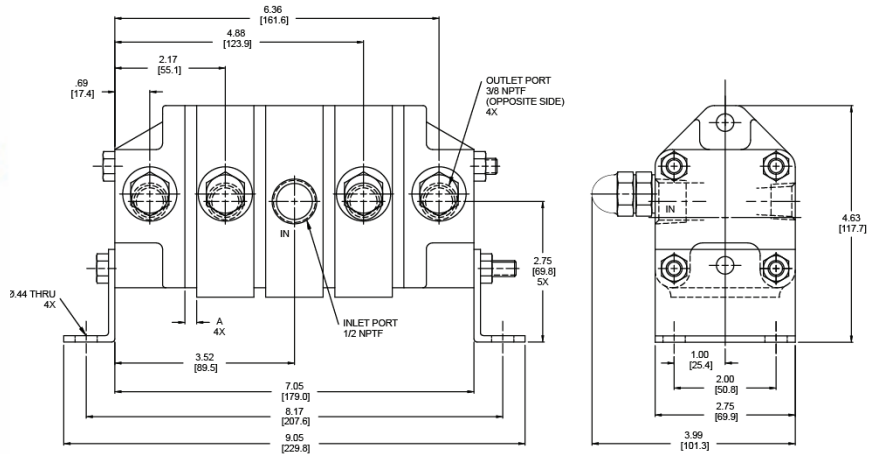
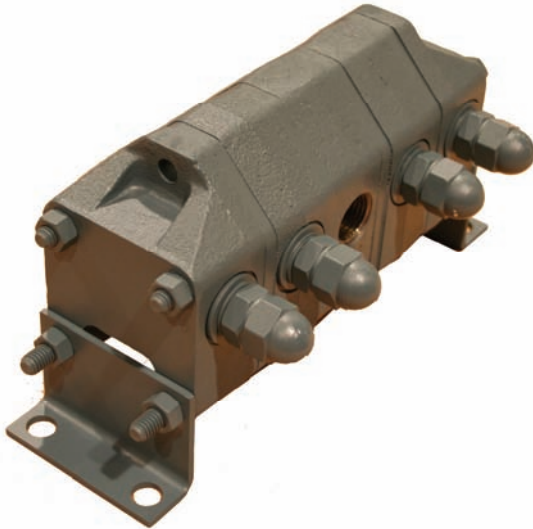
PM Series, Equal Flow Multi-Sections with Relief Valves

Equal flow multi-section units consist of several identical, individual sections coupled together to divide a flow from a common pump source into two or more equal flows. Each set of gear and shaft assemblies are individually supported in needle bearings.

PM2RV & PM6RV



PPM2RV



MODEL	NUMBER OF SECTIONS	TOTAL MAX. INLET (GPM)	0 PSI DISP. PER SECT. GAL./REV.	SLIP GPM/100 PSI	MAXIMUM INTERMITTENT PSI	MAXIMUM CONTINUOUS PSI	BOLT TORQUE Ft.-Lb.	MAX. DIFF. BETWEEN SECT. (PSI)	MAXIMUM RPM	MINIMUM RPM	A
PM2RV	2	3.5	0.00047	0.026	2500	2000	13-17	1500	3500	500	0.23
PM6RV	2	9.5	0.00137	0.038	2000	1500	13-17	1000	3500	500	0.40
PPM2RV	4	7.0	0.00047	0.026	2000	1500	13-17	1000	3500	500	0.53

WARNING: The specifications/application data shown in our catalogs and data sheets are intended only as a general guide for the product described (herein). Any specific application should not be undertaken without independent study, evaluation, and testing for suitability.