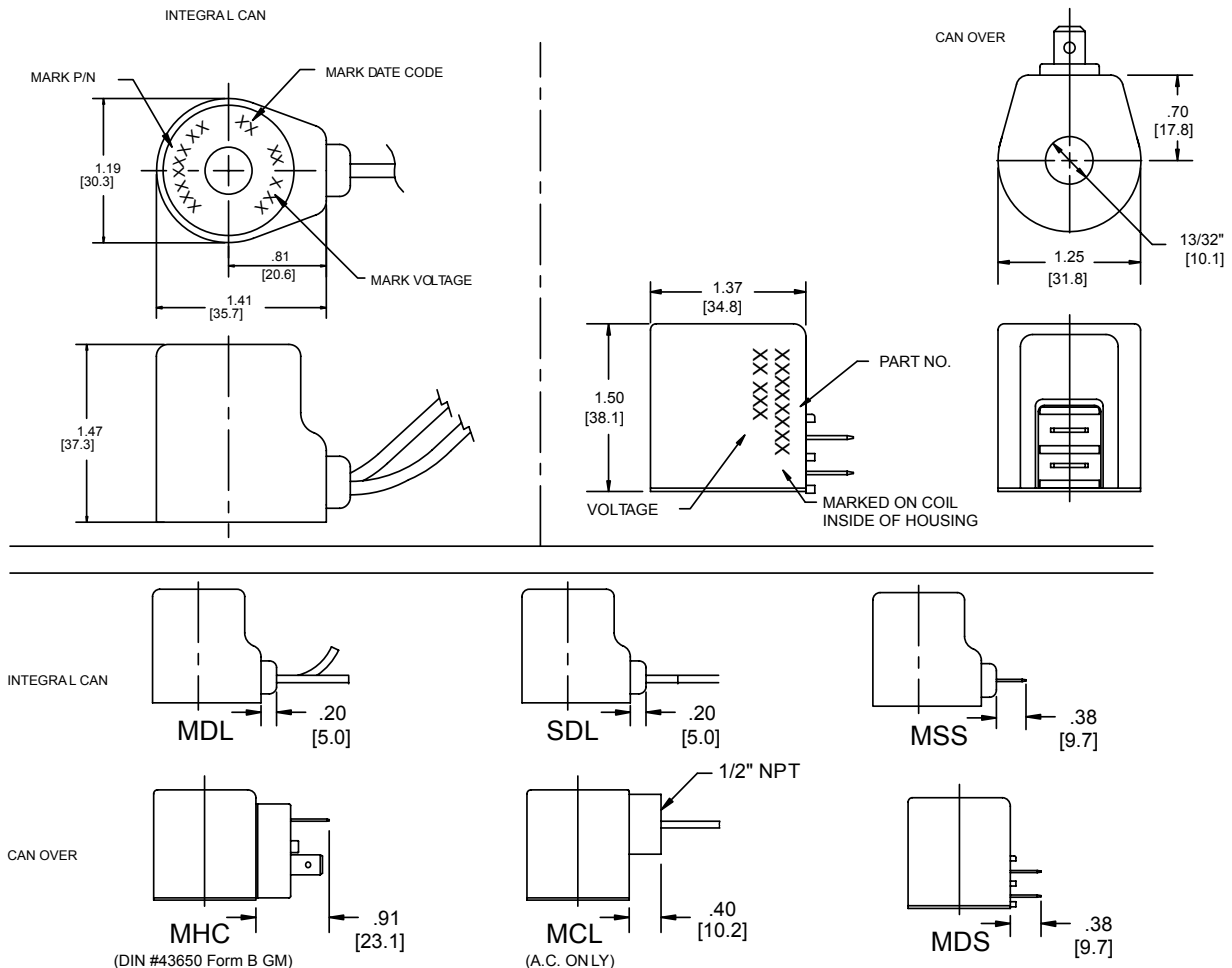




Standard "M" Type Coils

FEATURES: 13/32" I.D.

 Numerous terminals and voltages.
 Heavy gauge color coded
 lead wire.


ORDERING INFORMATION

M - * * - * *

 WHEN ORDERING
 FILL IN ALL BOXES

1: BASIC MODEL NO.	2: TERMINATION	3: VOLTAGE
M-Type coil	(ALL COILS DC VOLTAGE EXCEPT AS NOTED) DL - Double Lead DT - Deutsch on Leads DT04-2 P ML - Metri-Pack on Leads (12162000) PL - Packard on Leads (150 Series) WL - Weatherpack on Leads (12010972) SS - Single Spade DS - Double Spade HC - DIN 43650 (Hirschman) - (AC/DC) CL - Conduit Lead - (AC ONLY) 20 WATT STD. COIL	06 -6VDC 12 -12VDC 24 -24VDC 36 -36VDC 48 -48VDC 25 -24VAC 11 -110VAC 13 -125VAC 22 -220VAC 23 -250VAC 44 -440VAC

FEB. 2005

APPROXIMATE COIL WEIGHT: .24 lbs./ 11 kg.

REV G

APPROXIMATE COIL, CAN, BTM., & NU T ASS'Y WEIGHT: .33 lbs./ 15 kg.

WARNING: The specifications/application data shown in our catalogs and data sheets are intended only as a general guide for the product described (herein). Any specific application should not be undertaken without independent study, evaluation, and testing for suitability.

Phone: (815) 397-6628

Fax: (815) 397-2526

E-mail: delta@delta-power.com



Standard "M" Type Coils

Coil Model Numbers:

Termination	MDL	MSL	MDS	MSS	MHC	MCL		
Description	Double Lead	Single Lead	Double Spade	Single Spade	Hirschmann Connector	Double Lead Conduit	Lead Wire Color	AC Voltage Range
Voltage Amp							ORANGE	
Voltage Amp	12VDC 1.7	12VDC 1.7	12VDC 1.7	12VDC 1.7	12VDC 1.7		YELLOW	
Voltage Amp	24VDC .86	24VDC .86	24VDC .86		24VDC .86		BLUE	
Voltage Amp	36VDC .57			36VDC .57	36VDC .57		GREEN	
Voltage Amp	48VDC .45						BROWN	
Voltage Amp			24VAC .74		24VAC .74	24VAC .74	BLUE/ BLACK	
Voltage Amp			110VAC * .17		110VAC * .17	110VAC * .17	RED/ WHITE	* 100VAC 115VAC
Voltage Amp							RED	* 115VAC 130VAC
Voltage Amp			220VAC * .10		220VAC * .10	220VAC * .10	BLACK/ WHITE	* 200VAC 230VAC
Voltage Amp							VIOLET/ WHITE	* 225VAC 260VAC
Voltage Amp							VIOLET	* 400VAC 460VAC

Specifications:

Wattage: 20 watts nominal.

Duty Rating: Continuous duty $\pm 10\%$ rated voltage at 70 °F (21 °C) ambient.
Intermittent duty for higher ambient temperature.

Minimum Current for Actuation: 80% of rated current at room temperature.

Magnet Wire Class: N for all voltages.

Temperature Range: -40°F (-40°C) to 392°F (200°C)

Lead Wires: 18 gauge, 22"-24" long, 600 volt rating, with strain relief.

Encapsulating Material: Glass filled polyester, resistant to moisture, caustic solutions, fungus and vibration. Material temperature range is -40 °F (-40°C) to 392 °F (200°C).

Note: Delta Power A.C. Coils incorporate integrally molded full wave rectifiers which are rated for reverse voltage peaks of 1000 volts maximum.

A.C. Coils are rated 50/60 HZ.

* Optimum operating voltage noted.

Conduit connectors on A.C. coils have a maximum torque spec of 3 Ft. Lbs.

WARNING: The specifications/application data shown in our catalogs and data sheets are intended only as a general guide for the product described (herein). Any specific application should not be undertaken without independent study, evaluation, and testing for suitability.

Phone: (815) 397-6628

Fax: (815) 397-2526

E-mail: delta@delta-power.com