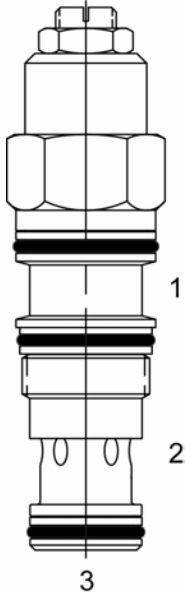


QS-CBS Counterbalance Valve, 3:1 Ratio



DESCRIPTION

M20 X 1.5 thread, counterbalance valve, 3:1 ratio.

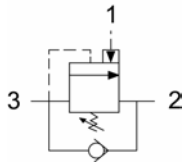
OPERATION

The QS-CBS check valve allows free flow from the directional valve (2) to the load (1) while a direct-acting, pilot-assisted relief valve controls flow from port 3 to port 2. Pilot assist at port 1 lowers the effective setting of the relief valve at a rate determined by the pilot ratio (3:1).

FEATURES

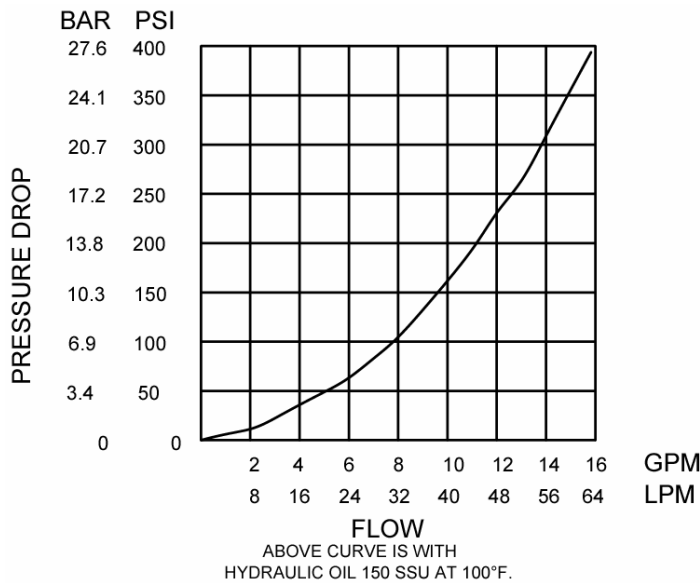
- Hardened parts for long life.
- Industry common metric cavity.

HYDRAULIC SYMBOL



Counterbalance valves with pilot assist are meant to control an overrunning load. Other names for this valve include motion control valve and over center valve.

PERFORMANCE



VALVE SPECIFICATIONS

| | |
|------------------------------------|---------------------------------|
| Nominal Flow | 15 GPM (57 LPM) |
| Rated Operating Pressure | 4000 PSI (276 bar) |
| Typical Internal Leakage (150 SSU) | 0-10 drops/min |
| Viscosity Range | 36 to 3000 SSU (3 to 647 cSt) |
| Filtration | ISO 18/16/13 |
| Media Operating Temperature Range | -40° to 250° F (-40° to 120° C) |
| Weight | .33 lbs. (.15 kg) |
| Operating Fluid Media | General Purpose Hydraulic Fluid |
| Cartridge Torque Requirements | 30 ft-lbs (40.6 Nm) |
| Cavity | QS SPECIAL 3W |
| Cavity Form Tool (Finishing) | 40500012 |
| Seal Kit | 21170016 |

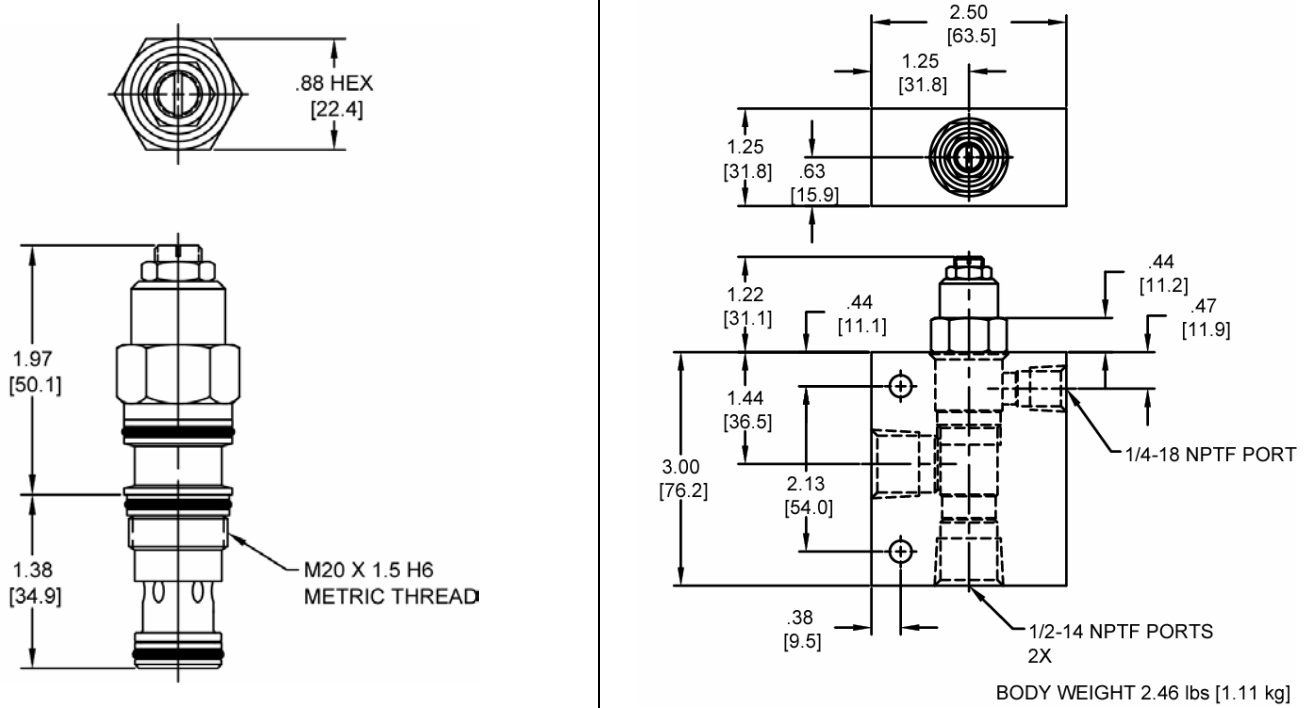
WARNING: The specifications/application data shown in our catalogs and data sheets are intended only as a general guide for the product described (herein). Any specific application should not be undertaken without independent study, evaluation, and testing for suitability.

Phone: (815) 397-6628

Fax: (815) 397-2526

E-mail: delta@delta-power.com

DIMENSIONS



ORDERING INFORMATION

| | | | | | |
|----------------|----|---|------|-------|-------------------------------|
| QS-CBS | | - | - | - | - |
| OPTIONS | | | | | |
| Buna Standard | 00 | | | Blank | BODIES |
| | | | | N | Without Body |
| | | | | | 1/2 NPT Ports |
| | | | | | PRESSURE RANGE/SETTING |
| | | | 1500 | | 400 - 1500 PSI |
| | | | 4000 | | 1000 - 4000 PSI |

WARNING: The specifications/application data shown in our catalogs and data sheets are intended only as a general guide for the product described (herein). Any specific application should not be undertaken without independent study, evaluation, and testing for suitability.

Phone: (815) 397-6628

Fax: (815) 397-2526

E-mail: delta@delta-power.com