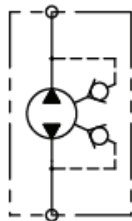
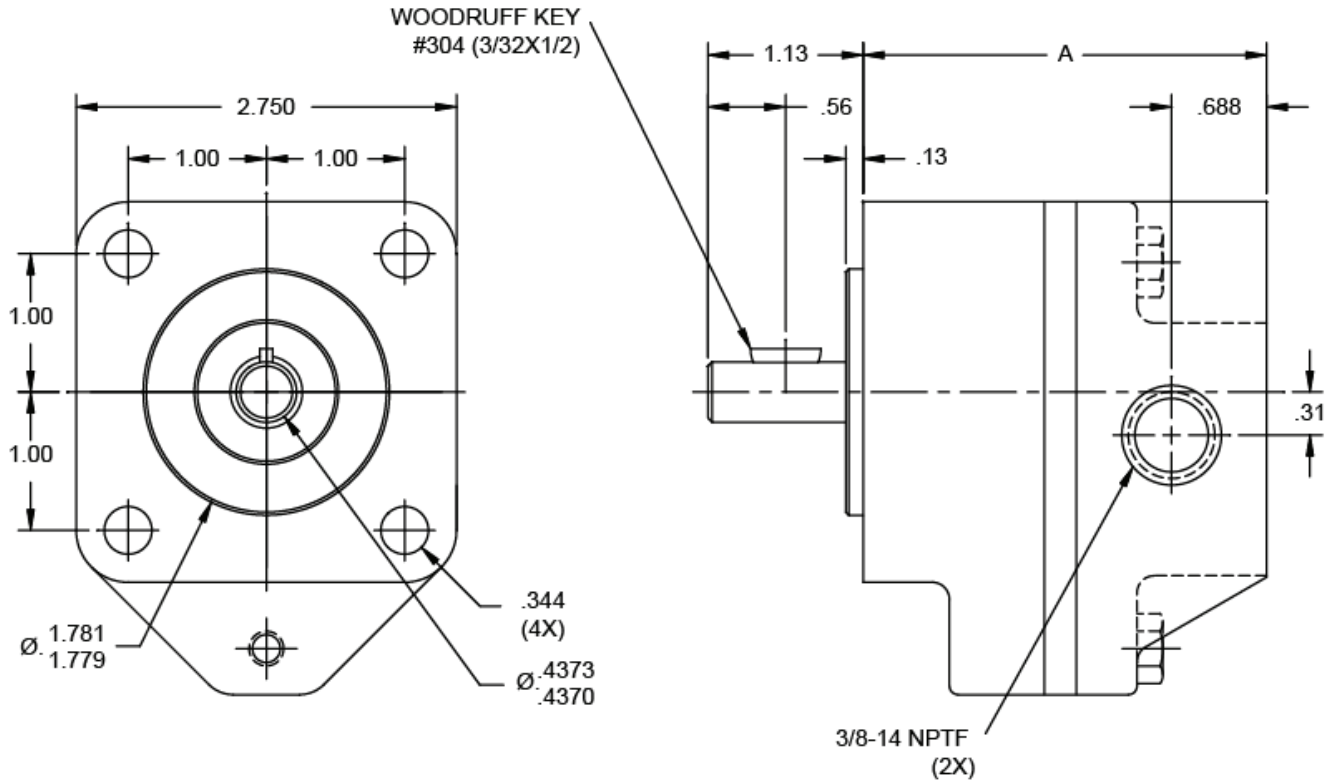
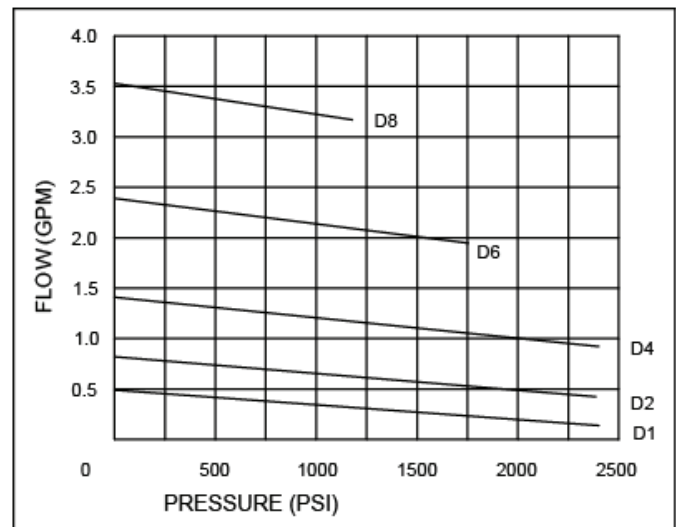


D1-D8 Pump, Bi-Directional



HYDRAULIC SCHEMATIC



| MODEL | GPM AT 1750 RPM | 0 PSI DISP. GAL./REV. | DISP. CU. IN./REV. | SLIP GPM PER 100 PSI | MAX. PUMP PRESSURE INTERMITTENT DUTY | MAX. PUMP PRESSURE CONTINUOUS DUTY | SPEED MAX. RPM | A    |
|-------|-----------------|-----------------------|--------------------|----------------------|--------------------------------------|------------------------------------|----------------|------|
| D1    | 0.49            | 0.00028               | 0.065              | 0.015                | 2400                                 | 1500                               | 5000           | 2.82 |
| D2    | 0.82            | 0.00047               | 0.108              | 0.017                | 2400                                 | 1500                               | 5000           | 2.91 |
| D4    | 1.41            | 0.00081               | 0.187              | 0.020                | 2400                                 | 1500                               | 4000           | 3.08 |
| D6    | 2.39            | 0.00137               | 0.316              | 0.025                | 1750                                 | 1100                               | 3000           | 3.36 |
| D8    | 3.53            | 0.00202               | 0.468              | 0.030                | 1200                                 | 750                                | 1800           | 3.68 |

WARNING: The specifications/application data shown in our catalogs and data sheets are intended only as a general guide for the product described herein. Any specific application should not be undertaken without independent study, evaluation, and testing for suitability.

Phone: (815) 397-6628

Fax: (815) 397-2526

E-mail: [delta@delta-power.com](mailto:delta@delta-power.com)