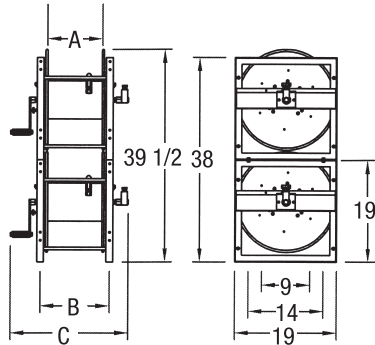


# HOSE REELS

Inlet — 1" Female Through Swivel    Max. Temp. — 200°F

Pictured as two units.  
Each sold separately.



All reels shipped less hose unless requested on quote basis.

Mounting holes 1/2" dia.

SERIES	DIMENSIONS		
	A	B	C
SFM 10	10	12 3/4	21 3/8
SFM 15	15	18 1/2	27 1/8
SFM 20	20	23 1/2	32 1/8
SFM 25	25	28 1/2	37 1/8



For 3/4" and 1" Hose I.D.

## Stack Frame

**MANUAL DRIVEN HOSE REELS. REEL** is ideally applied where long lengths of hose are required, as in Agriculture, Power Wash, Pest Control and Construction trades. Hose can be dispensed and retracted with greater ease and expedience than coiling by hand.

### FEATURES

- Flow through shaft for left or right hand installation
- Stack capability with no added parts
- Self lubricating ABS bearings
- External swivel - heavy duty and greasable for longer service
- Fully adjustable brake - adjust tension with hand knob
- Positive lock pin
- Mounting base is light and strong
- 3 or 4 roller kits can be mounted top or bottom position (sold separately)

Model Number	Operating Pressure	Capacity Hose I.D.		Shipping Weight
		3/4"	1"	
SFM 10-10	300 PSI	75 FT.	50 FT.	37#
SFM 15-10	300 PSI	100 FT.	75 FT.	50#
SFM 20-10	300 PSI	125 FT.	100 FT.	59#
SFM 25-10	300 PSI	150 FT.	125 FT.	72#

Roller kits available in 3 or 4 roller configurations. Sold separately.  
Recommended stacking limit at two units high.

