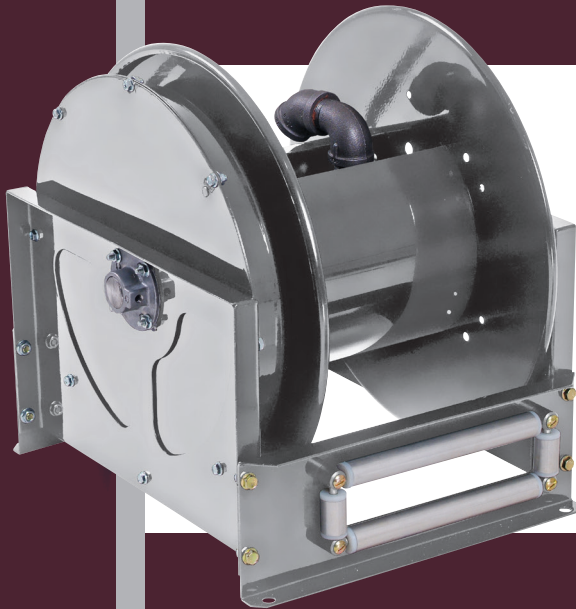


HOSE REELS



Reels available only in standard rf hose payout position.

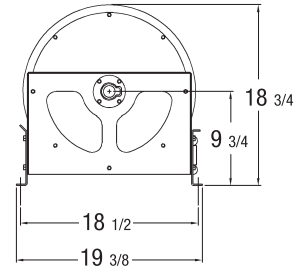
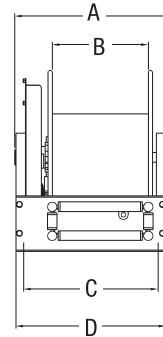
Ceiling mount bracket available on page 18

Mounting holes 1/2" dia.

	3/4 & 1
A	16 1/2
B	10
C	14
D	*20

*with swivel installed

Inlet — 1" FPT Max. Temp. — 200°F



For 3/4" and 1" Hose I.D.

DS Series

304 STAINLESS STEEL Reels should be utilized in harsh environments, such as chemical clean up or when an exceptionally clean area has to be maintained for food or beverage process. The latch mechanism is non-sparking in the event flammable gases or liquids are present. Only available in low pressure.

LOW PRESSURE ONLY

Model Number	Operating Pressure	Hose I.D.	Hose Length	Shipping Weight
LDS-700*	300 PSI	3/4 IN.	—	73#
LDS-740	300 PSI	3/4 IN.	40 Ft.	75#
LDS-750	300 PSI	3/4 IN.	50 Ft.	80#
LDS-770	300 PSI	3/4 IN.	70 Ft.	86#
LDS-1000*	300 PSI	1 IN.	—	73#
LDS-1025	300 PSI	1 IN.	25 Ft.	80#
LDS-1045	300 PSI	1 IN.	45 Ft.	90#

ALL STAINLESS DS SERIES ARE SHIPPED WITH A NICKEL PLATED SWIVEL

OPTIONS AVAILABLE

Air / Water application hose

White washdown hose

Chemical application hose

* Models without hose.

