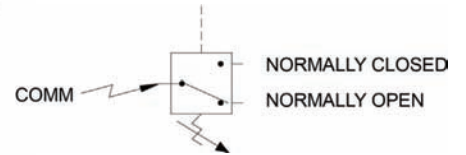


*Pressure Switch*

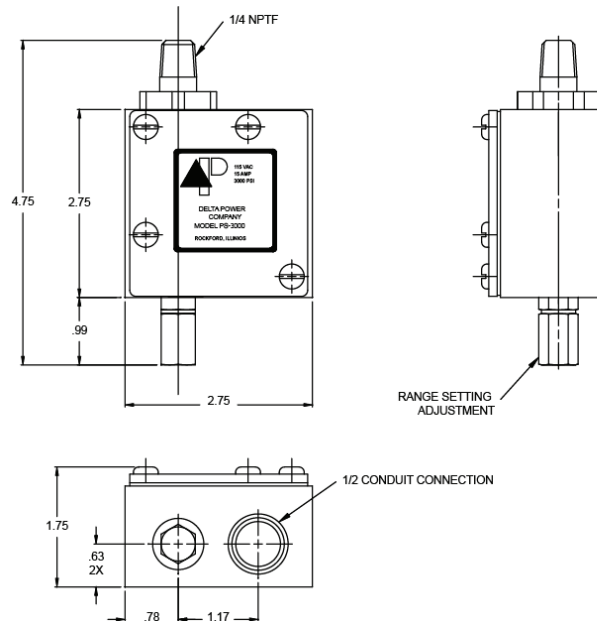


Model	Range
PS1500	150-1500 PSI Adjustable
PS3000	500-3000 PSI Adjustable

This compact, rugged pressure switch is designed to meet today's need for an inexpensive, yet dependable control. Although housed in an oil-tight, aluminum body, the assembly weighs only 1 lbs. 4 oz. and can be easily included into new or existing circuitry.

**Micro Switch Electrical Data UL and CSA Listed:**

- 15 Amps and 1/2 HP, 125 or 250 VAC
- 1/2 Amp, 125VDC
- 1/4 Amp, 250 VDC
- 5 Amps, 12 VAC "L"



**Features Include:**

- A micro switch rated for 2 million cycles
- A specially designed actuator consisting of a dampened piston and positive stop striker plate
- Externally adjustable pressure range
- 1/2 Conduit connector
- 1/4 NPTF male pipe thread
- Common, normally open, and normally closed terminals
- Gasket, removable cover for ease of wire assembly

Pressure reset characteristics: 250-350 PSI differential

**WARNING:** The specifications/application data shown in our catalogs and data sheets are intended only as a general guide for the product described (herein). Any specific application should not be undertaken without independent study, evaluation, and testing for suitability.