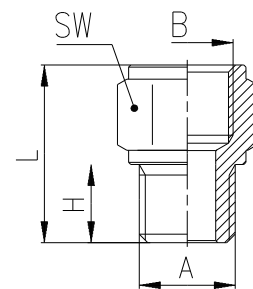


# Nickel-Plated Brass NPTF Female - BSPP Adapter Fittings 2521

Thread Type : NPTF (1/8", 1/4", 3/8", 1/2")  
BSP (G1/8, G1/4, G3/8, G1/2, G3/4, G1)

NPTF and BSP THREADS					
DIMENSIONS (in inches)					
Model	A	B	H	L	SW
	BSP	NPTF			
2521 1/8-02	1/8	1/8	.236	.630	.512
2521 1/4-04	1/4	1/4	.315	.846	.669
2521 3/8-06	3/8	3/8	.354	.905	.787
2521 1/2-08	1/2	1/2	.393	1.102	.945



When involved in factory maintenance or plant installation it is often difficult to be absolutely certain which size of fittings will be required. Pipe fittings provide a cost effective solution to this problem. The full range includes straight, L-shaped, T-shaped and cross piece male or female couplings and are available in a variety of thread sizes up to 3/4".

The addition of the Camozzi Sprint® seal to twelve different models of pipe fittings eliminates the need to use liquid sealants or tape and save a considerable amount of time during installation. The Sprint® fitting can be connected and disconnected several times.

Material: brass OT58 UNI 5705 (nickel-plated).  
T. min. - 40°C (-40°F)  
T. max. +120°C (250°F)

## GENERAL DATA

Material	nickel-plated brass (UNI 5705 OT58) and PTFE
Threads	10-32 UNF, 1/8", 1/4", 3/8", 1/2" NPTF GAS conical ISO 7 (BSPT), typically models ending in "0" and/or with Sprint "S" prefix GAS cylindrical ISO 228 (BSP), typically models ending with "1", (2651/2661 gaskets required are sold separately)
Pressure	40 bar (0 to 580 psi)
Fluid	Compressed air or other low pressure fluids
Temperature	-40°C - 120°C (-40 F to 250 F)

## Pipe fittings

