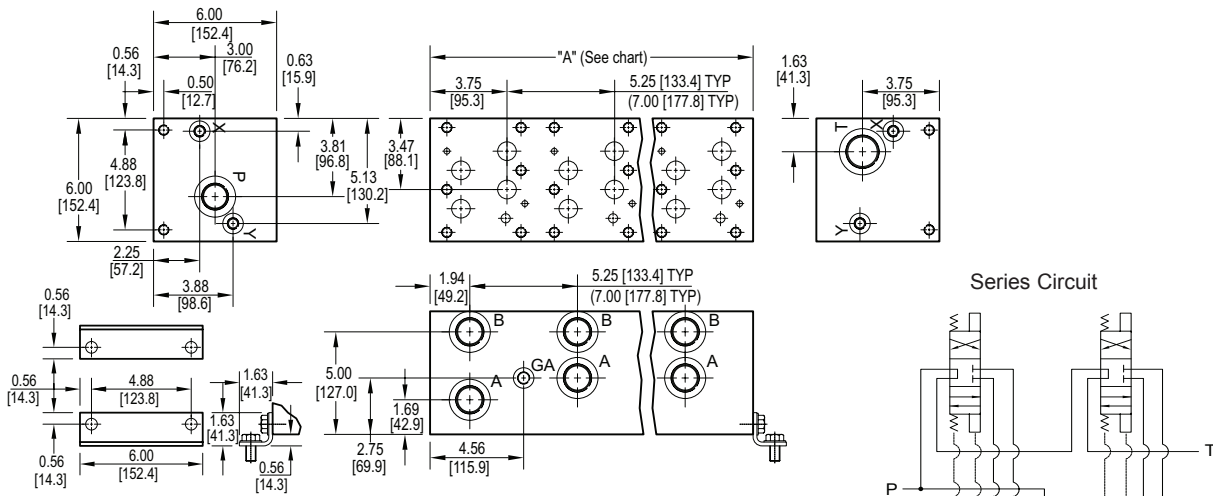


D08 Series Circuit Manifold



No. of stations	02	03
"A" length (code 5 spa.) inch [mm]	10.50 [266.7]	15.75 [400.1]
apx. weight alum lb [kg]	37 [17]	51 [23]
apx. weight ferrous lb [kg]	109 [49]	164 [74]
"A" length (code 7 spa.) inch [mm]	12.25 [311.2]	19.25 [489.0]
apx. weight alum lb [kg]	51 [23]	63 [29]
apx. weight ferrous lb [kg]	127 [58]	200 [91]

All mounting hardware is supplied.
See page 65 for itemized list.

Port code	Valve mtg.	Manifold mtg.
P, S	0.50-13 UNC x 1.19 [30] DP	0.50-13 UNC x 0.88 [22.3] DP
B, M, T	M12 ISO 6H x 1.19 [30] DP	M12 ISO 6H x 0.88 [22.3] DP

Specifications, descriptions, and dimensional data are subject to correction or change without notice or incurring obligation.
Download latest catalog page revisions at www.daman.com.

Ordering Information

For **coating options**
see pages 245-246.

Material	Valve Pattern	Circuit	No. of Stations	Valve Spacing	Port Threads	Options																																																								
<table border="1"> <thead> <tr> <th colspan="2">Material</th> </tr> </thead> <tbody> <tr> <td>A</td> <td>Aluminum - 6061-T6 3000† psi • 20.7 MPa</td> </tr> <tr> <td>D</td> <td>Ductile Iron - D4512 5000† psi • 34.5 MPa</td> </tr> <tr> <td colspan="2">† Working pressure should be considered in accordance with ISO 4413 to determine appropriate material type.</td> </tr> </tbody> </table>	Material		A	Aluminum - 6061-T6 3000† psi • 20.7 MPa	D	Ductile Iron - D4512 5000† psi • 34.5 MPa	† Working pressure should be considered in accordance with ISO 4413 to determine appropriate material type.		<table border="1"> <thead> <tr> <th colspan="2">Circuit</th> </tr> </thead> <tbody> <tr> <td>S</td> <td>Series Circuit</td> </tr> </tbody> </table>	Circuit		S	Series Circuit	<table border="1"> <thead> <tr> <th colspan="2">Valve Spacing</th> </tr> </thead> <tbody> <tr> <td>5</td> <td>5.25 inch 133.4 mm</td> </tr> <tr> <td>7</td> <td>7.00 inch 177.8 mm</td> </tr> </tbody> </table>	Valve Spacing		5	5.25 inch 133.4 mm	7	7.00 inch 177.8 mm	<table border="1"> <thead> <tr> <th colspan="2">Options</th> </tr> </thead> <tbody> <tr> <td colspan="2">No options available.</td> </tr> </tbody> </table>	Options		No options available.																																						
Material																																																														
A	Aluminum - 6061-T6 3000† psi • 20.7 MPa																																																													
D	Ductile Iron - D4512 5000† psi • 34.5 MPa																																																													
† Working pressure should be considered in accordance with ISO 4413 to determine appropriate material type.																																																														
Circuit																																																														
S	Series Circuit																																																													
Valve Spacing																																																														
5	5.25 inch 133.4 mm																																																													
7	7.00 inch 177.8 mm																																																													
Options																																																														
No options available.																																																														
<table border="1"> <thead> <tr> <th colspan="2">Valve Pattern</th> </tr> </thead> <tbody> <tr> <td>D08</td> <td>ISO 4401-08-07 NFPA T3.5.1-D08 See Tech Information</td> </tr> </tbody> </table>	Valve Pattern		D08	ISO 4401-08-07 NFPA T3.5.1-D08 See Tech Information	<table border="1"> <thead> <tr> <th colspan="2">No. of Stations</th> </tr> </thead> <tbody> <tr> <td colspan="2">Aluminum</td> </tr> <tr> <td>02...03</td> <td>Available with spacing code 5</td> </tr> <tr> <td>02...03</td> <td>Available with spacing code 7</td> </tr> <tr> <td colspan="2">Ductile Iron</td> </tr> <tr> <td>02...03</td> <td>Available with spacing code 5</td> </tr> <tr> <td>02...03</td> <td>Available with spacing code 7</td> </tr> </tbody> </table>	No. of Stations		Aluminum		02...03	Available with spacing code 5	02...03	Available with spacing code 7	Ductile Iron		02...03	Available with spacing code 5	02...03	Available with spacing code 7	<table border="1"> <thead> <tr> <th colspan="6">Port Threads</th> </tr> <tr> <th></th> <th>P,A,B</th> <th>T</th> <th>X & Y</th> <th>GA</th> <th></th> </tr> </thead> <tbody> <tr> <td>P</td> <td>NPTF • ANSI B1.20.3</td> <td>1.00</td> <td>1.25</td> <td>0.38</td> <td>0.25</td> </tr> <tr> <td>S</td> <td>SAE • ISO 11926</td> <td>-16</td> <td>-20</td> <td>-6</td> <td>-6</td> </tr> <tr> <td>B</td> <td>BSPP • ISO 1179</td> <td>1.00</td> <td>1.25</td> <td>0.38</td> <td>none</td> </tr> <tr> <td>M</td> <td>ISO • ISO 6149</td> <td>M33</td> <td>M42</td> <td>M14</td> <td>none</td> </tr> <tr> <td>T</td> <td>BSPT • ISO 7</td> <td>1.00</td> <td>1.25</td> <td>0.38</td> <td>none</td> </tr> </tbody> </table>	Port Threads							P,A,B	T	X & Y	GA		P	NPTF • ANSI B1.20.3	1.00	1.25	0.38	0.25	S	SAE • ISO 11926	-16	-20	-6	-6	B	BSPP • ISO 1179	1.00	1.25	0.38	none	M	ISO • ISO 6149	M33	M42	M14	none	T	BSPT • ISO 7	1.00	1.25	0.38	none
Valve Pattern																																																														
D08	ISO 4401-08-07 NFPA T3.5.1-D08 See Tech Information																																																													
No. of Stations																																																														
Aluminum																																																														
02...03	Available with spacing code 5																																																													
02...03	Available with spacing code 7																																																													
Ductile Iron																																																														
02...03	Available with spacing code 5																																																													
02...03	Available with spacing code 7																																																													
Port Threads																																																														
	P,A,B	T	X & Y	GA																																																										
P	NPTF • ANSI B1.20.3	1.00	1.25	0.38	0.25																																																									
S	SAE • ISO 11926	-16	-20	-6	-6																																																									
B	BSPP • ISO 1179	1.00	1.25	0.38	none																																																									
M	ISO • ISO 6149	M33	M42	M14	none																																																									
T	BSPT • ISO 7	1.00	1.25	0.38	none																																																									