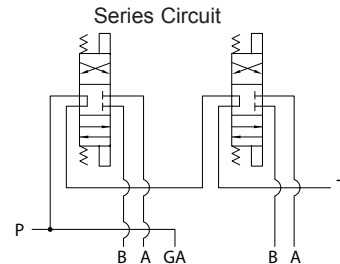
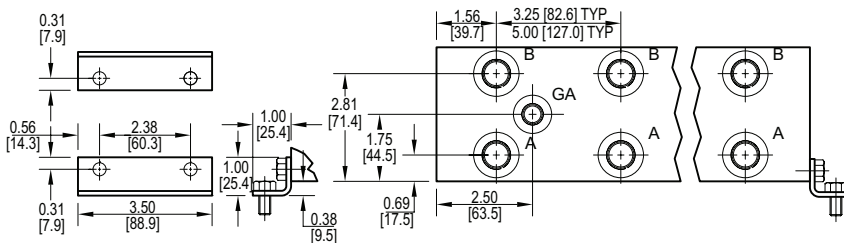
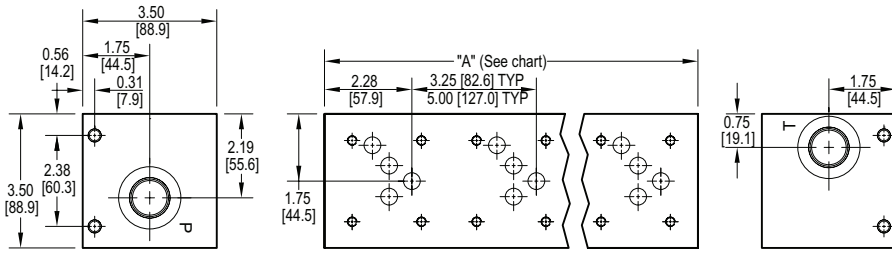


D05 Standard Flow Series Circuit Manifold



No. of stations	02	03	04
"A" length (code 3 spa.) inch [mm]	6.50 [165.1]	9.75 [247.7]	13.00 [330.2]
apx. weight alum lb [kg]	8 [4]	11 [5]	14 [7]
apx. weight ferrous lb [kg]	17 [8]	26 [12]	34 [15]
"A" length (code 5 spa.) inch [mm]	8.25 [209.6]	13.25 [336.6]	18.25 [463.6]
apx. weight alum lb [kg]	9 [4]	15 [7]	20 [9]
apx. weight ferrous lb [kg]	22 [10]	36 [16]	49 [22]

All mounting hardware is supplied, except for stainless. See page 64 for itemized list.

Port code	Valve mtg.	Manifold mtg.
P, S	0.25-20 UNC x 0.75 [19] DP	0.31-18 UNC x 0.44 [11.1] DP
B, M, T	M6 ISO 6H x 0.75 [19] DP	M8 ISO 6H x 0.44 [11.1] DP

Specifications, descriptions, and dimensional data are subject to correction or change without notice or incurring obligation. Download latest catalog page revisions at www.daman.com.

Ordering Information

For **coating options** see pages 245-246.

Material	Valve Pattern	Circuit	No. of Stations	Valve Spacing	Port Threads	/	Options
----------	---------------	---------	-----------------	---------------	--------------	---	---------

Material	
A	Aluminum - 6061-T6 3000 [†] psi • 20.7 MPa
D	Ductile Iron - D4512 5000 [†] psi • 34.5 MPa
S*	Stainless Steel - 17-4 5000 [†] psi • 34.5 MPa

[†] Working pressure should be considered in accordance with ISO 4413 to determine appropriate material type.

*All stainless steel products are passivated.

Valve Pattern	
D05	ISO-4401-05-04 NFPA T3.5.1-D05 See Tech Information

Circuit	
S	Series Circuit Standard Flow

No. of Stations	
Aluminum	
02...04	Available with spacing code 3
02...04	Available with spacing code 5
Ductile Iron	
02...04	Available with spacing code 3
02...04	Available with spacing code 5
Stainless Steel	
02...04	Available with spacing code 3
02...04	Available with spacing code 5

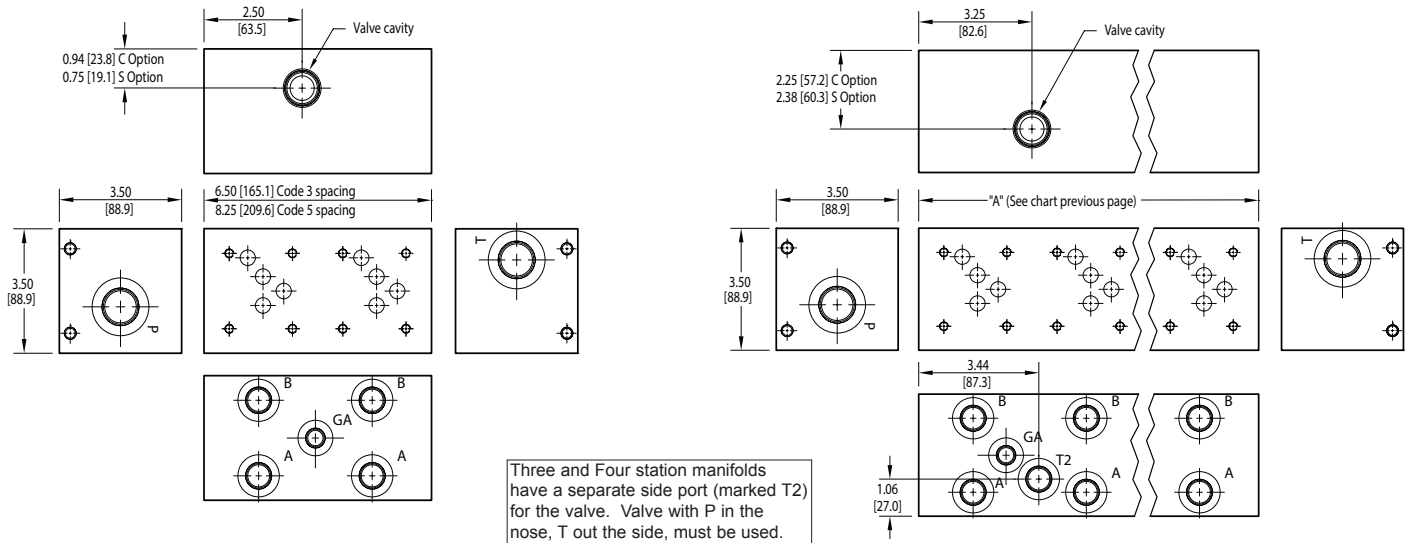
Valve Spacing	
3	3.25 inch 82.6 mm
5	5.00 inch 127.0 mm

Options	
See next page for available options and ordering codes.	

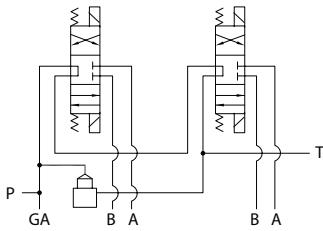
Port Threads			
	P & T	A & B	GA
P*	NPTF • ANSI B1.20.3	0.75	0.50
S	SAE • ISO 11926	-12	-8
B	BSPP • ISO 1179	0.75	0.50
M	ISO • ISO 6149	M27	M18
T*	BSPT • ISO 7	0.75	0.50

* Pipe ports in stainless can experience galling

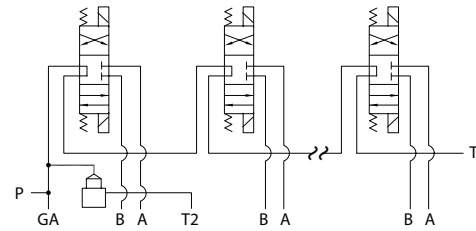
Options - D05 Standard Flow Series Manifold



Series Circuit with Cavity - (2) station



Series Circuit with Cavity - (3) or (4) station



Ordering Information



Cavity	
Omit if cavity not required.	
C	Common cavity: 2-station has solenoid clearance. 3 & 4 station does not have solenoid clearance. C-10-2 (P in nose) For valves w/1" hex max.
S	Sun Cavity: T-3A (P in nose) See Tech Info for valves.

Port Code (ref.)	T2 Port Size
	3 and 4 Station Manifold
P	0.50 NPTF • ANSI B1.20.3
S	-8 SAE • ISO 11926
B	0.50 BSPP • ISO 1179
M	M18 ISO • ISO 6149
T	0.50 BSPT • ISO 7