

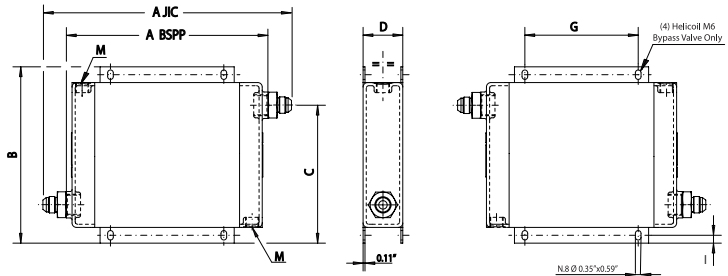
Elements



Technical Information

Heat Exchanger Elements - Opposite Ports

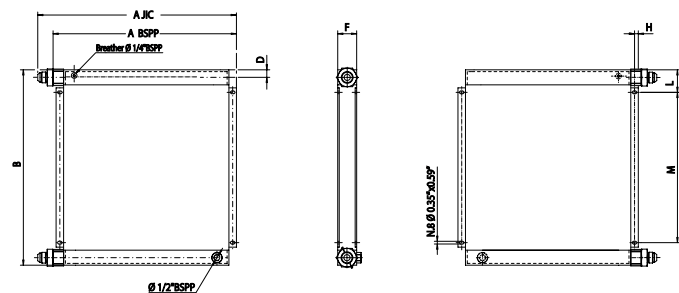
• Designed to Mount in Front of the Engine Radiator or Other Fan (Air Flow) • Should Be Installed as Close as Possible to the Radiator to Ensure the Air Flow Does Not Bypass the Cooler • Cost Effective • Aluminum Bar & Plate Construction • Up to 50% Smaller Than Traditional Fin & Tube Construction • Integrated Bypass Check Valve Helps Protect the Hydraulic System and Oil Cooler from Excessive Back Pressure • Bypass Valve Eliminates the Need to Add an External Valve • Bypass Valve Can be Removed for Inspection and Service • Back Pressure Not to Exceed Either the Maximum Rated Flow or Pressure • Compatible with Mineral Oils: HL & HLP, Water - Oil Emulsion, and Water - Glycol • 280 PSI Maximum Operating Pressure • 248°F Maximum Temperature • JIC Adapters Included • *HP Removed @ 50°F Change in Temperature



Stock Number	Bypass	HP Removed*	GPM Range	A - BSPP	A - JIC	B	C	D	G	I	L - BSPP	L - JIC	M	Face Area	Ship Wt.
7494160	None	2.5 - 2.9	7.78 - 18.0	7.16	9.36	8.26	0.63	1.77	3.93	0.45	1/2 - 15 BSPP	#8 JIC	1/2 - 14 BSPP	0.21	4.0
7494161	None	4.5 - 6.0	12.0 - 49.0	12.59	15.75	11.02	8.62	1.77	7.08	0.49	1 - 11 BSPP	#16 JIC	1/2 - 14 BSPP	0.50	7.0
7494167	22 PSI	4.5 - 6.0	12.0 - 49.0	13.38	16.54	11.22	2.59	0.90	7.08	0.49	1 - 11 BSPP	#16 JIC	1/2 - 14 BSPP	0.50	9.7
7494168	44 PSI	4.5 - 6.0	12.0 - 49.0	13.38	16.54	11.22	2.59	0.90	7.08	0.49	1 - 11 BSPP	#16 JIC	1/2 - 14 BSPP	0.50	9.7
7494162	None	6.1 - 7.9	14.0 - 59.0	12.59	15.75	11.02	8.62	2.48	7.08	0.49	1 - 11 BSPP	#16 JIC	1/2 - 14 BSPP	0.50	8.8
7494169	22 PSI	6.1 - 7.9	14.0 - 59.0	13.38	16.54	11.22	2.59	0.90	7.08	0.49	1 - 11 BSPP	#16 JIC	1/2 - 14 BSPP	0.50	13.2
7494170	44 PSI	6.1 - 7.9	14.0 - 59.0	13.38	16.54	11.22	2.59	0.90	7.08	0.49	1 - 11 BSPP	#16 JIC	1/2 - 14 BSPP	0.50	13.2
7494163	None	8.5 - 10.1	22.0 - 62.0	14.90	18.11	13.38	11.06	2.48	9.44	0.49	1 - 11 BSPP	#16 JIC	1/2 - 14 BSPP	0.81	12.5
7494171	22 PSI	8.5 - 10.1	22.0 - 62.0	15.74	18.90	13.58	2.59	0.98	9.44	0.49	1 - 11 BSPP	#16 JIC	1/2 - 14 BSPP	0.81	17.6
7494172	44 PSI	8.5 - 10.1	22.0 - 62.0	15.74	18.90	13.58	2.59	0.98	9.44	0.49	1 - 11 BSPP	#16 JIC	1/2 - 14 BSPP	0.81	17.6
7494158	None	10.5 - 13.0	22.0 - 69.0	17.51	20.67	15.94	13.54	2.48	12.20	0.49	1 - 11 BSPP	#16 JIC	1/2 - 14 BSPP	1.26	16.9
7494173	22 PSI	10.5 - 13.0	22.0 - 69.0	18.30	21.46	16.14	2.59	0.90	12.20	0.49	1 - 11 BSPP	#16 JIC	1/2 - 14 BSPP	1.26	23.1
7494174	44 PSI	10.5 - 13.0	22.0 - 69.0	18.30	21.46	16.14	2.59	0.90	12.20	0.49	1 - 11 BSPP	#16 JIC	1/2 - 14 BSPP	1.26	23.1
7494164	None	14.5 - 18.5	22.0 - 84.0	21.25	24.41	20.11	17.71	2.48	15.74	0.49	1-1/4 - 11 BSPP	#20 JIC	1/2 - 14 BSPP	2.10	11.7
7494175	22 PSI	14.5 - 18.5	22.0 - 84.0	22.04	25.20	20.31	2.59	0.90	15.74	0.49	1-1/4 - 11 BSPP	#20 JIC	1/2 - 14 BSPP	2.10	33.9
7494176	44 PSI	14.5 - 18.5	22.0 - 84.0	22.04	25.20	20.31	2.59	0.90	15.74	0.49	1-1/4 - 11 BSPP	#20 JIC	1/2 - 14 BSPP	2.10	33.9

Heat Exchanger Elements - Ports Same Side

• Designed to Mount in Front of the Engine Radiator or Other Fan (Air Flow) • Should Be Installed as Close as Possible to the Radiator to Ensure the Air Flow Does Not Bypass the Cooler • Cost Effective • Aluminum Bar & Plate Construction • Up to 50% Smaller Than Traditional Fin & Tube Construction • Integrated Bypass Check Valve Helps Protect the Hydraulic System and Oil Cooler from Excessive Back Pressure • Bypass Valve Eliminates the Need to Add an External Valve • Bypass Valve Can be Removed for Inspection and Service • Back Pressure Not to Exceed Either the Maximum Rated Flow or Pressure • Compatible with Mineral Oils: HL & HLP, Water - Oil Emulsion, and Water - Glycol • 280 PSI Maximum Operating Pressure • 248°F Maximum Temperature • JIC Adapters Included • *HP Removed @ 50°F Change in Temperature



Stock Number	Bypass	HP Removed*	GPM Range	A - BSPP	A - JIC	B	D	F	H	L	M	O - BSPP	O - JIC	Face Area	Ship Wt.
7494159	None	1.5 - 2.0	4.5 - 13.0	5.62	6.72	7.48	0.68	2.75	0.39	2.16	3.14	1/2 - 14 BSPP	#8 JIC	0.14	2.8
7494165	None	27.0 - 30.0	28.0 - 87.0	24.01	25.59	25.59	0.98	2.48	0.49	2.95	19.68	1-1/4 - 11 BSPP	#20 JIC	3.10	38.4
7494177	22 PSI	27.0 - 30.0	28.0 - 87.0	23.62	25.20	25.59	0.98	2.48	0.49	2.95	23.62	1-1/4 - 11 BSPP	#20 JIC	3.25	44.9
7494178	44 PSI	27.0 - 30.0	28.0 - 87.0	23.62	25.20	25.59	0.98	2.48	0.49	2.95	23.62	1-1/4 - 11 BSPP	#20 JIC	3.25	44.9
7494166	None	32.0 - 39.0	32.0 - 120.0	38.66	40.55	21.65	1.18	2.48	0.49	2.95	15.74	1-1/2 - 11 BSPP	#24 JIC	4.18	58.2
7494179	22 PSI	32.0 - 39.0	32.0 - 120.0	38.81	40.71	21.65	1.18	2.48	0.49	2.95	15.74	1-1/2 - 11 BSPP	#24 JIC	4.18	62.6
7494180	44 PSI	32.0 - 39.0	32.0 - 120.0	38.81	40.71	21.65	1.18	2.48	0.49	2.95	15.74	1-1/2 - 11 BSPP	#24 JIC	4.18	62.6