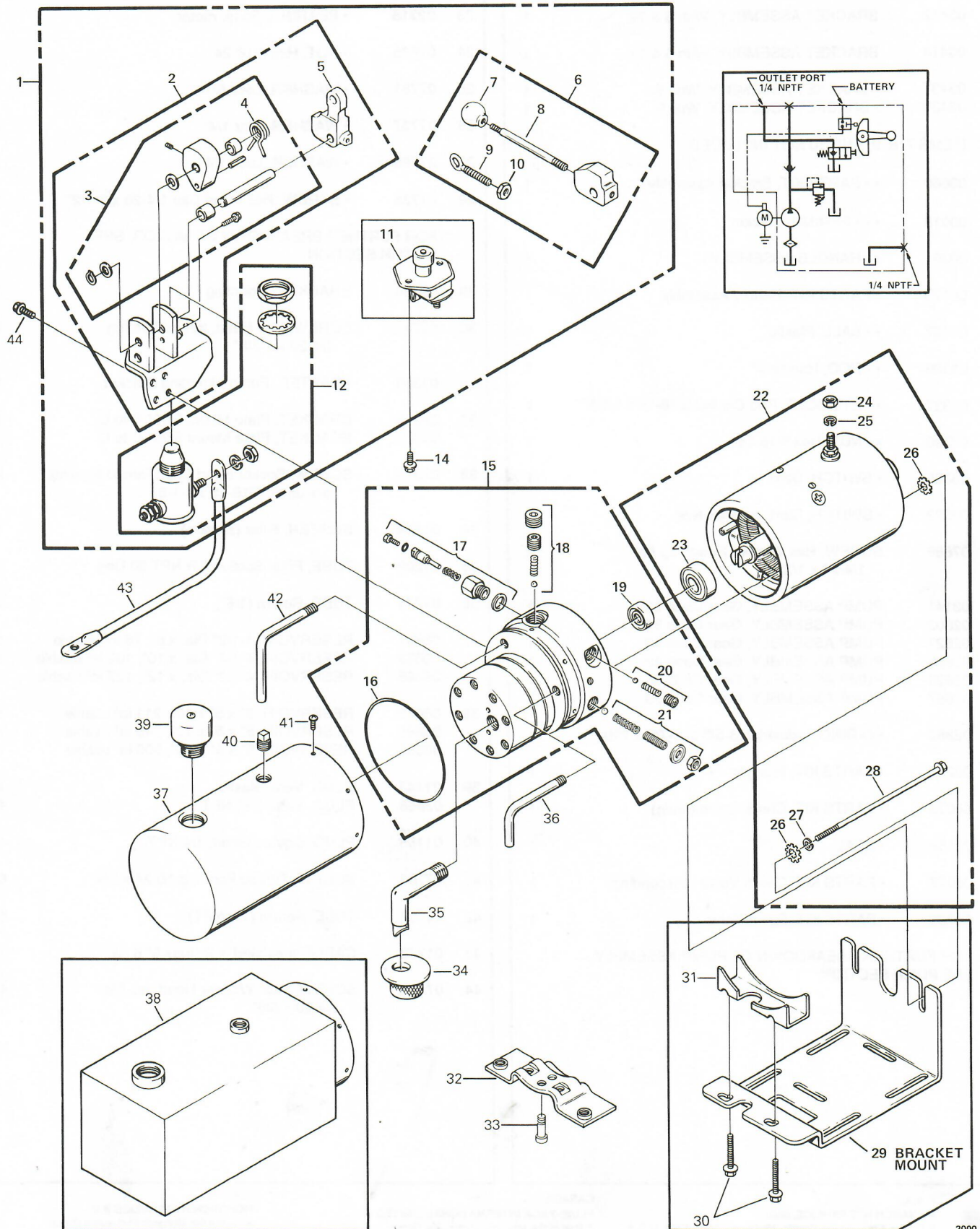




# Dyna-Jack® M-301



# M-301

Ref. No.	Part No.	Description	No. Req.
1	03411	BRACKET ASSEMBLY, With 5 & 12	1
	03321	BRACKET ASSEMBLY, With 5 & 11	1
	03412	BRACKET ASSEMBLY, With 6 & 12	1
	03413	BRACKET ASSEMBLY, With 6 & 11	1
2	03437	• BRACKET ASSEMBLY, With 5	1
	03438	• BRACKET ASSEMBLY, With 6	1
ITEMS 7, 8, 9, AND 10 NOT INCLUDED			
3	03660	• • PARTS KIT, Bracket Assembly	1
4	00018	• • • SPRING, Torsion	1
5	00391	• • HANDLE ASSEMBLY	1
6	00175	• PARTS KIT, Handle Assembly	1
7	01157	• • BALL, Plastic	1
8	01326	• • ROD, Handle 4"	1
9	01327	• • EYE BOLT, Rod Control 5/16-18 x 1-7/8"	1
10	07790	• • NUT, Hex 5/16-18	1
11	03308	• SWITCH, Start	1
12	03322	• SWITCH, Start, canister type	1
14	07886	SCREW, Hex Washer Head, tap tite 1/4-20 x 1/2"	2
15	03141	PUMP ASSEMBLY, Gear Code 62	1
	02602	PUMP ASSEMBLY, Gear Code 51	1
	02627	PUMP ASSEMBLY, Gear Code 43	1
	02605	PUMP ASSEMBLY, Gear Code 42	1
	02626	PUMP ASSEMBLY, Gear Code 05	1
	02657	PUMP ASSEMBLY, Gear Code 03	1
16	02352	• O-RING, Industrial (3-5/8 x 3-7/8 x 1/8)	1
17	00235	• PARTS KIT, Plunger	1
18	00075	• PARTS KIT, Check Valve (main)	1
19	02159	• SEAL	1
20	00078	• PARTS KIT, Check Valve (descending)	1
21	03766	• PARTS KIT, Relief Valve	1
FOR FURTHER BREAKDOWN OF PUMP ASSEMBLY, SEE PUMP SECTION			

Ref. No.	Part No.	Description	No. Req.
22	08111	MOTOR, Electric, 12 VDC	1
	08112	MOTOR, Electric, 12 VDC	1
	08120	MOTOR, Electric, 24 VDC	1
23	02318	• BEARING, Base, motor	1
24	07625	• NUT, Hex 5/16-24	1
25	07781	• WASHER, Lock 5/16"	1
26	07737	• WASHER, Star 1/4"	4
27	07795	• WASHER, Lock 1/4"	2
28	07738	• SCREW, Hex Head Cap 1/4-20 x 6-1/2"	2
FOR FURTHER BREAKDOWN OF MOTOR, SEE MOTOR SECTION			
29	02238	BRACKET, Mounting	1
30	07717	SCREW, Hex Head, thread forming 1/4-20 x 1-3/8"	2
31	01329	ADAPTER, Pump Mounting Bracket	1
32	04559	BRACKET, Plate Mount 5.00" C to C	1
	04560	BRACKET, Plate Mount 3.25" C to C	1
33	07894	SCREW, Socket Head Cap, Thread forming, torx drive, 5/16-18 x 1-1/8	2
34	01134	SCREEN, Filter (suction)	1
35	01209	TUBE, Filter Suction 3/8 NPT 90 Deg.	1
36	01274	TUBE, Return (1/8")	1
37	06661	RESERVOIR, 4-1/2" Dia. x 8", 76 in <sup>3</sup> usable	1
	06663	RESERVOIR, 4-1/2" Dia. x 10", 102 in <sup>3</sup> usable	1
	06665	RESERVOIR, 4-1/2" Dia. x 12", 127 in <sup>3</sup> usable	1
38	06678	RESERVOIR, 5" x 5" x 10", 211 in <sup>3</sup> usable	1
	06685	RESERVOIR, 5" x 5" x 12", 249 in <sup>3</sup> usable	1
	06686	RESERVOIR, 5" x 5" x 15", 306 in <sup>3</sup> usable	1
39	01143	PLUG, Vent (plastic)	1
	03866	PLUG, Vent, 3/8" NPT	1
40	01108	PLUG, Square Head, 1/4 NPT	1
41	07703	SCREW, Thread Forming 10-24 x 3/8"	6
42	01203	TUBE, Return (1/8 NPT)	1
43	01373	CABLE, Insulated, with lugs 9" 6 ga.	1
44	07815	SCREW, Hex Washer Head, tap tite 1/4-20 x 5/8"	4



U.S.A.:  
**MONARCH HYDRAULICS, INC.**  
 P.O. Box 1764, Grand Rapids, Michigan 49501-1764, U.S.A.  
 Telephone: (616) 458-1306  
 Telefax: (616) 458-1616

CANADA:  
**FLUID-PACK INTERNATIONAL LIMITED**  
 A Part of the Monarch Hydraulics Group  
 460 Newbold St., London, Ontario, Canada N6E 1K3  
 Telephone: (519) 686-5900  
 Telefax: (519) 686-8976

EUROPE:  
**MONARCH HYDRAULICS B.V.**  
 A Part of the Monarch Hydraulics Group  
 Loodsweg 2°O, 8243 PH Lelystad, The Netherlands  
 Telephone: +31.320-261707  
 Telefax: +31.320-261635