

## RD5000 ORDERING INFORMATION

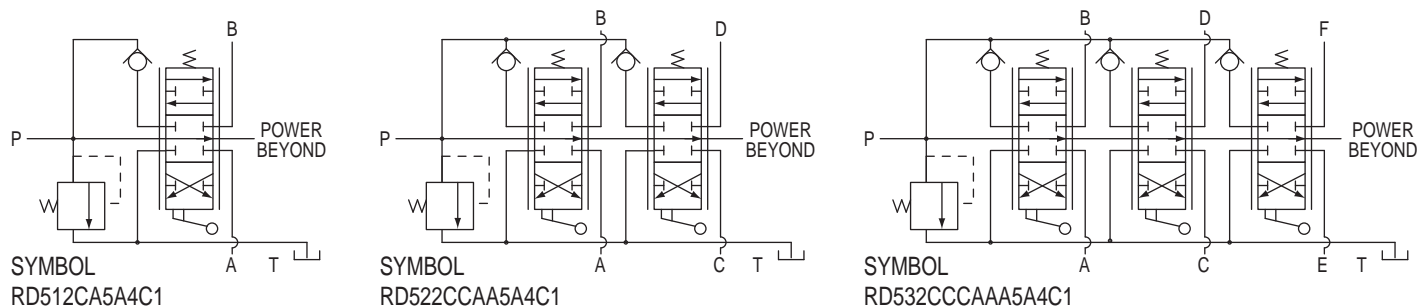
**STANDARD VALVES AVAILABLE:** All standard valves have end inlet and outlet locations, power beyond conversion plug, complete handle assemblies, and adjustable differential poppet relief.

VALVE PART NUMBER	SPOOL TYPE					IN/OUT PORT SIZE	WORK PORT SIZE		RELIEF SETTING
	1st SPOOL CONFIGURATION			2nd SPOOL CONFIG.	3rd SPOOL CONFIG.		3/4 NPTF	1/2 NPTF	
	FLOAT SPOOL <sup>1</sup>	3 POSITION 4 WAY <sup>2</sup>	3 POSITION 4 WAY DETENTED <sup>3</sup>	3 POSITION 4 WAY <sup>2</sup>	3 POSITION 4 WAY <sup>2</sup>				
RD512GG5A4B1	X					X	X		2000 PSI @ 10 GPM
RD512CA5A4B1		X				X	X		2000 PSI @ 10 GPM
RD513GG5A4B1	X					X		X	2000 PSI @ 10 GPM
RD513CA5A4B1		X				X		X	2000 PSI @ 10 GPM
RD513CB5A4B1			X			X		X	2000 PSI @ 10 GPM
RD522GCGA5A4B1	X			X		X	X		2000 PSI @ 10 GPM
RD522CCAA5A4B1		X		X		X	X		2000 PSI @ 10 GPM
RD532GCCGAA5A4B1	X			X	X	X	X		2000 PSI @ 10 GPM
RD532CCCAA5A4B1		X		X	X	X	X		2000 PSI @ 10 GPM

1. Four position, four way, tandem center, detented "in" the float position. Spring center to neutral from work positions. Work ports blocked in neutral.
2. Tandem center. Spring center to neutral from work positions. Work ports blocked in neutral.
3. Tandem center, 3 position detent. Work ports blocked in neutral.

### MISC. AND FIELD CONVERSION KITS FOR MODEL RD-5000 VALVES

MATRIX CODE	MATRIX CODE	MATRIX CODE
660150001 A SPRING CENTER KIT	660250006 1 NO RELIEF PLUG	660350001 HANDLE CLEVIS
660150002 B 3 POSITION DETENT KIT	660250003 4 LOW PRESSURE ADJUSTABLE RELIEF CARTRIDGE	660551001 RD5100 SEAL KIT
660150003 C FRICTION DETENT KIT	660250002 5 HIGH PRESSURE ADJUSTABLE RELIEF CARTRIDGE	660552001 RD5200 SEAL KIT
660150018 N 1 POSITION DETENT SPOOL OUT W/ SPRING CENTER	660312005 D CLOSED CENTER CONVERSION PLUG	660553001 RD5300 SEAL KIT
660150020 P 2 POSITION DETENT W/ SPRING CENTER KIT	660150015 LOAD CHECK KIT	660150011 6 STRAIGHT JOYSTICK HANDLE KIT
660312003 B CONVERSION PLUG	660150045 R SPRING CENTER WITH MICRO-SWITCH KIT	660150012 5 45° BENT JOYSTICK HANDLE PARTS
660312004 C POWER BEYOND PLUG 3/4 NPTF	660150004 1 HANDLE HARDWARE KIT	660150014 G FLOAT HARDWARE KIT
660312008 F POWER BEYOND PLUG #12 SAE		660552002 AUTO CYCLE SEAL KIT



VALVES