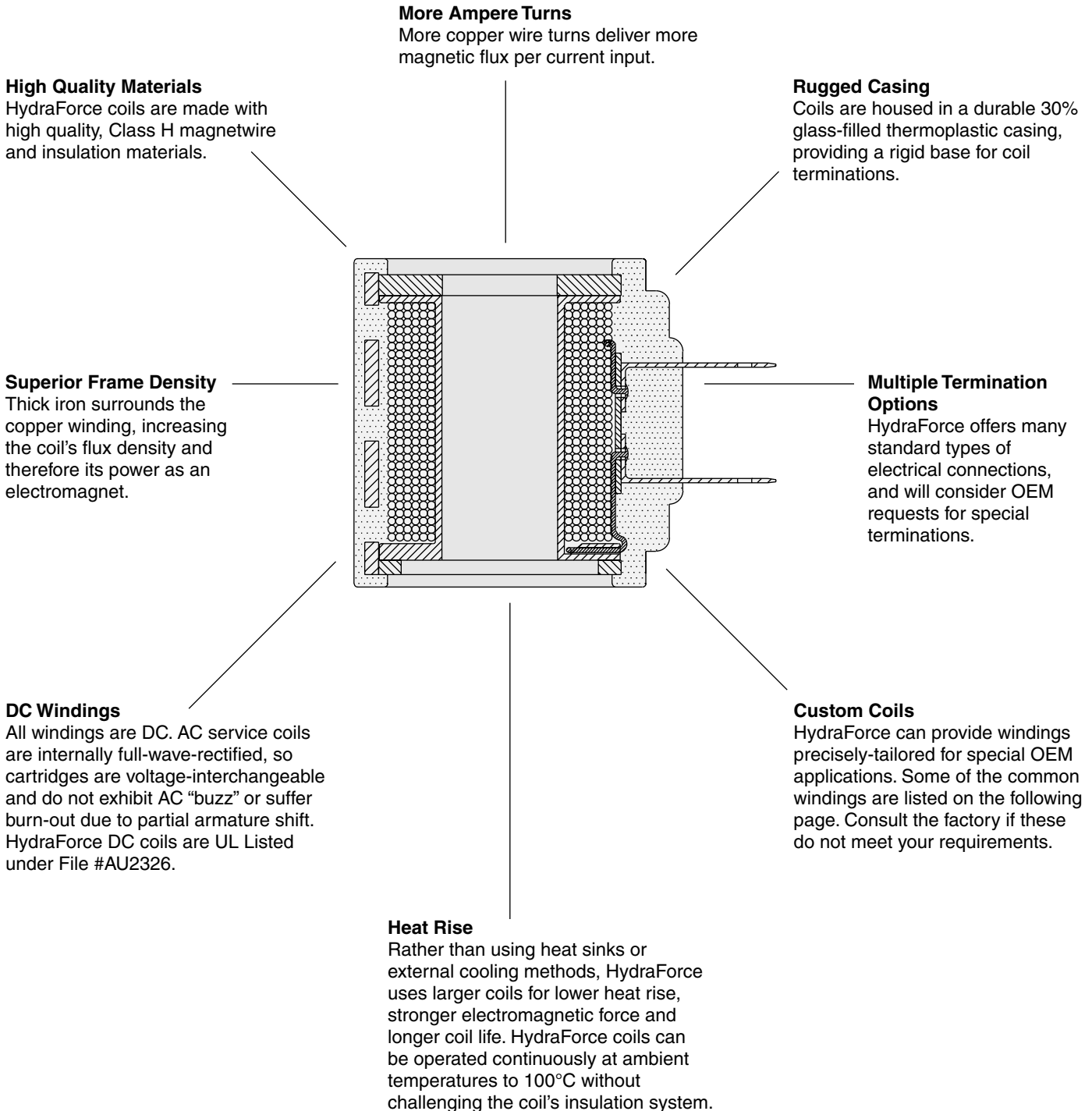


Standard Coils and Proportional Valve Coils

WHY HYDRAFORCE STANDARD COILS OUTPERFORM COMPETITIVE UNITS



Note: Some coils may differ in construction from this illustration.

Standard Coils and Proportional Valve Coils

COMMON WINDING SPECIFICATIONS

08, 80 Size Coil Data (14.7 Watts)		
Volts	Resistance (DC) @ 20°C Ohms	Initial Current Draw Amps
DC Service		
6*	2.46	2.44
10	6.8	1.47
12	9.8	1.22
20*	27.2	0.74
24	39.3	0.61
30*	61.4	0.49
36	88.3	0.41
48	156.6	0.31
72*	352.4	0.20
AC Service		
24	31.2	0.61
115	765.5	0.13
230	3035.0	0.06

*Special Order Coils

10, 38, 58, 12, 52, 16, 56 Size Coil Data (20 Watts)		
Volts	Resistance (DC) @ 20°C Ohms	Initial Current Draw Amps
DC Service		
6*	1.8	3.33
10	4.8	2.08
12	7.2	1.67
20*	19.0	1.05
24	28.8	0.83
30*	43.2	0.69
36	64.8	0.56
48	110.2	0.44
72*	249.8	0.29
AC Service		
24	23.6	0.83
115	568.0	0.17
230	2304.0	0.09

*Special Order Coils

70 Size Coil Data Proportional Coil Data		
Volts	Resistance (DC) @ 20°C Ohms	Nominal I-Max. Current Draw Amps
12	5.0	1.50
24	20.0	0.75

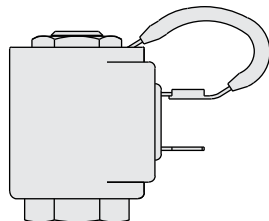
EHPR Coil Data Proportional Coil Data		
Volts	Resistance (DC) @ 20°C Ohms	Nominal I-Max. Current Draw Amps
10	3.1	1.50
12	5.4	1.20
20	12.5	0.75
24	21.7	0.60

COIL INFORMATION

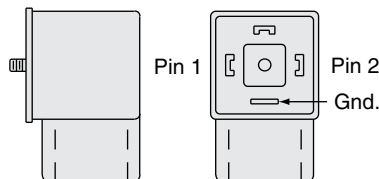
- AC service coils are internally rectified, and can be used in 50 or 60 cycle (Hz) lines.
- Special voltages and terminations are available for OEM applications; consult factory.
- Coil should always be installed with lettering facing up.
- Standard coils are not hermetically sealed. For applications requiring water- or weather-resistant coils, see page 3.400.1
- AC voltage service with transient surges over 1000 volts may require that a varistor be placed in parallel at the coil.
- EG option coils do not use ground terminal. Pins 1 and 2 are not polarity-sensitive.

Voltage	Varistor Part No.	Joule Rating Required
115	GE: V150LA10A Siemens: S10R150 or equivalent	45 minimum
230	GE: V250LA40A Siemens: S20R250 or equivalent	130 minimum

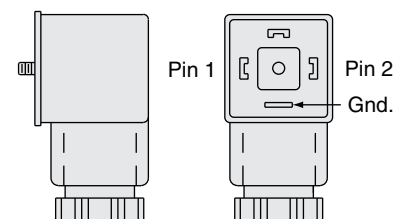
COIL ACCESSORIES



**Coil Ground Strap
for DS Coils**
HF Part No. 6502200



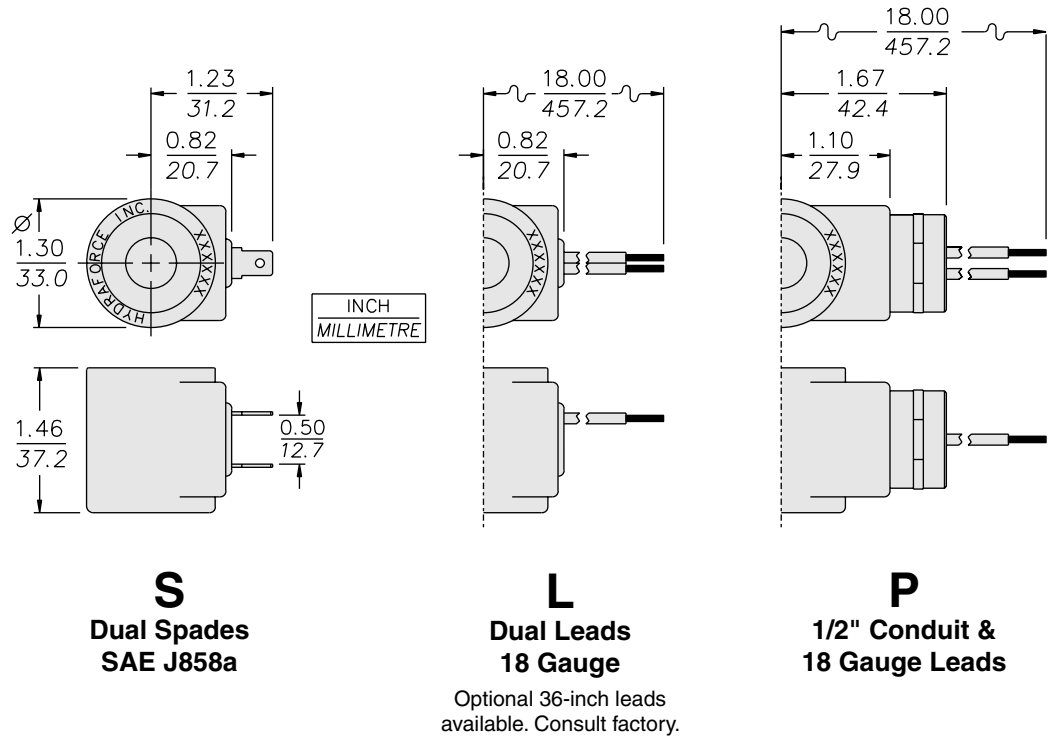
**DIN 43650
1/2" Conduit to Connector**
HF Part No. 6110001



DIN 43650
Cable Gland PG 9
(7 mm nominal cable diameter)
HF Part No. 6110002
or Cable Gland PG 11
(9 mm nominal cable diameter)
HF Part No. 6110005

Standard Coils and Proportional Valve Coils

SERIES 08, 80, 88, 98 COIL INFORMATION



[Coil 08_DS STP Files](#)

[Coil 08_DL STP Files](#)

[Coil 08_AP STP Files](#)

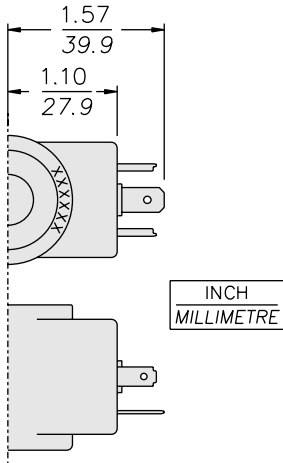
Voltage	Part Number Suffix		
	S	L	P
10 VDC	6301010	6302010	
12 VDC	6301012	6302012	6305012
24 VDC	6301024	6302024	6305024
36 VDC	6301036	6302036	
*24 VAC			6315024
*115 VAC			6315115
*230 VAC			6315230

*Rectified

Coil Weight: 110 g. (4.0 oz.)

Standard Coils and Proportional Valve Coils

SERIES 08, 80, 88, 98 COIL INFORMATION

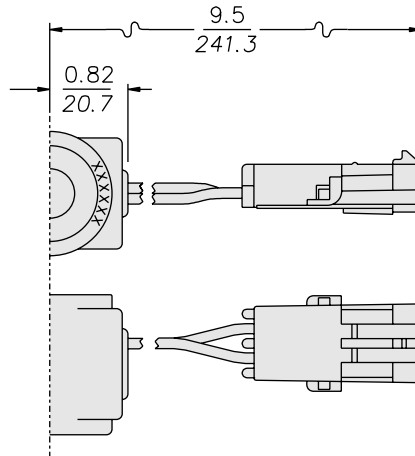


G

DIN 43650 Connector

Pins 1 and 2 are not polarity-sensitive.
Ground pin is not used.

[Coil 08_DG STP Files](#)

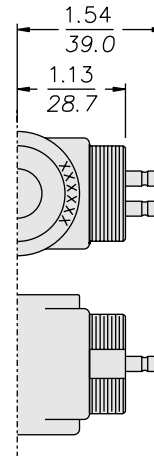


W

Dual 18 Gauge Leads with Weather Pack® Connector

For use with Packard
part no. 12015792 male plug

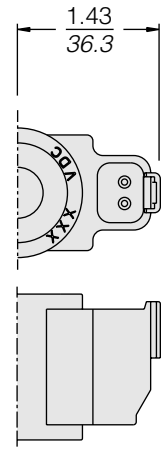
[Coil 08_DLW STP Files](#)



K

Kostal Connector

DK Coils; U.K.
availability only.



DR

Integral Deutsch Connector

DR Models without Diode
DR/D Models with Diode
DR/Z Models with Zener Diode

Mating Connector:
Deutsch No. DT06-2S
HF Part No. 4001417

[Coil 08_DR STP Files](#)

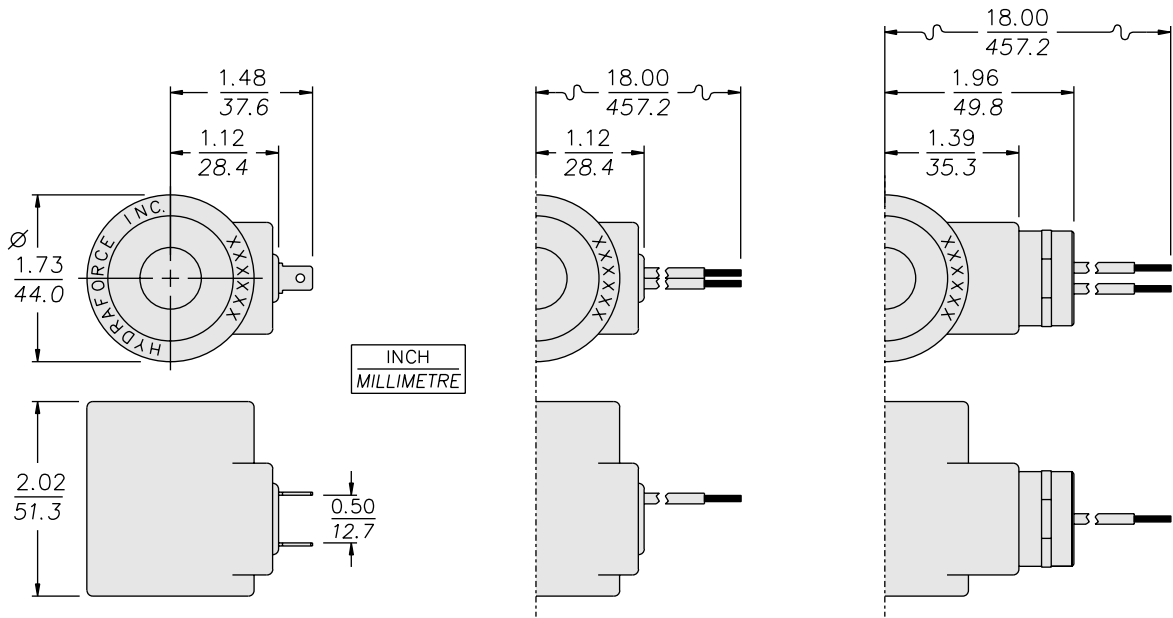
Voltage	Part Number Suffix					
	G	W	K	DR	DR/D	DR/Z
10 VDC	6306010	6309410				
12 VDC	6306012	6309412	6348812	4301512	4301872	4301852
24 VDC	6306024	6309424	6348824	4301524	4301874	4301854
36 VDC	6306036	6309436				
*24 VAC	6316024					
*115 VAC	6316115					
*230 VAC	6316230					

*Rectified

Coil Weight: 110 g. (4.0 oz.)

Standard Coils and Proportional Valve Coils

SERIES 10, 12, 16, 38, 58 COIL INFORMATION



S
Dual Spades
SAE J858a

[Coil 10_DS STP Files](#)

L
Dual Leads
18 Gauge
Optional 36-inch leads
available. Consult factory.

[Coil 10_DL STP Files](#)

P
1/2" Conduit &
18 Gauge Leads
[Coil 10_AP STP Files](#)

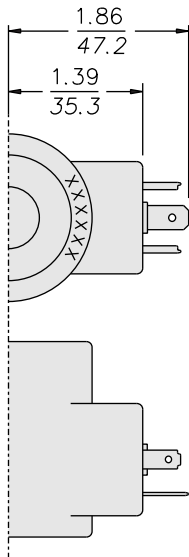
Voltage	Part Number Suffix		
	S	L	P
10 VDC	6351010	6352010	
12 VDC	6351012	6352012	6355012
24 VDC	6351024	6352024	6355024
36 VDC	6351036	6352036	
*24 VAC			6365024
*115 VAC			6365115
*230 VAC			6365230

*Rectified

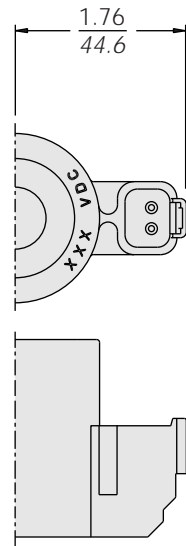
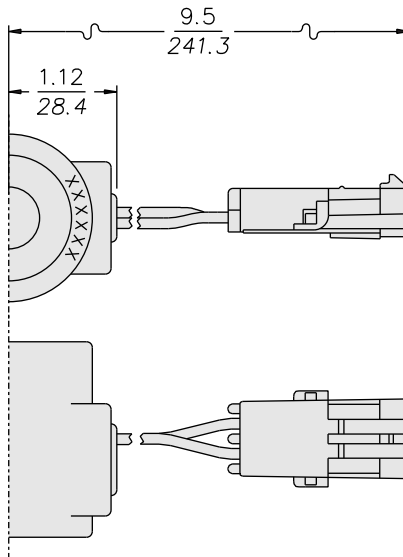
Coil Weight: 270 g. (9.6 oz.)

Standard Coils and Proportional Valve Coils

SERIES 10, 12, 16, 38, 58 COIL INFORMATION



INCH
MILLIMETRE



G

**DIN 43650
Connector**

Pins 1 and 2 are not
polarity-sensitive.
Ground pin is not used.

[Coil 10_DG STP Files](#)

W

**Dual 18 Gauge Leads with
Weather Pack® Connector**

For use with Packard
part no. 12015792 male plug

[Coil 10_DLW STP Files](#)

DR

**Integral Deutsch
Connector**

DR Models without Diode
DR/D Models with Diode
DR/Z Models with Zener Diode

Mating Connector:
Deutsch No. DT06-2S
HF Part No. 4001417

[Coil 10_DR STP Files](#)

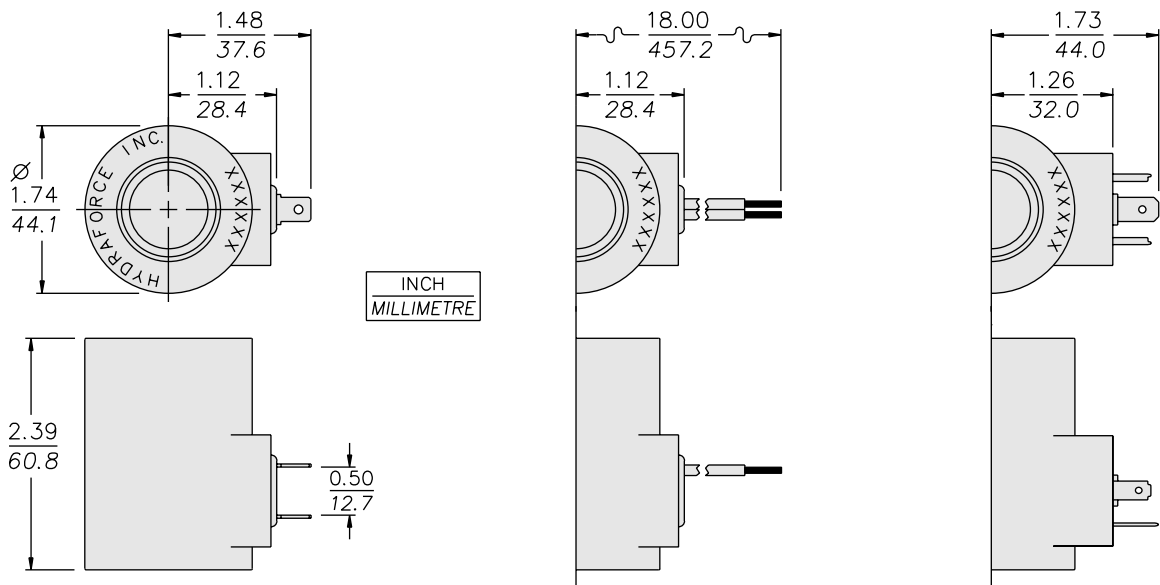
Voltage	Part Number Suffix				
	G	W	DR	DR/D	DR/Z
10 VDC		6359410		4301891	
12 VDC	6356012	6359412	4301612	4301892	4301862
20 VDC				4301893	
24 VDC	6356024	6359424	4301624	4301894	4301864
36 VDC	6356036	6359436			
*24 VAC	6366024				
*115 VAC	6366115				
*230 VAC	6366230				

*Rectified

Coil Weight: 270 g. (9.6 oz.)

Proportional Valve Coils

SIZE 70 COIL INFORMATION



[Coil 70_DS STP Files](#)

[Coil 70_DL STP Files](#)

[Coil 70_DG STP Files](#)

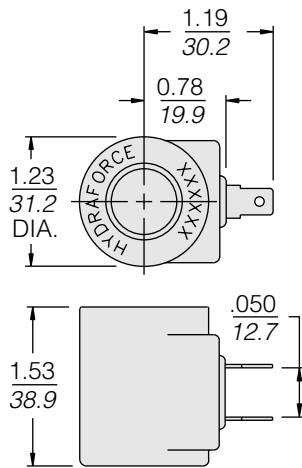
Pins 1 and 2 are not polarity-sensitive.
Ground pin is not used.

Voltage	Part Number Suffix		
	S	L	G
12 VDC	6507112	6507212	6507612
24 VDC	6507124	6507224	6507624

Coil Weight: 320 g. (11.2 oz.)

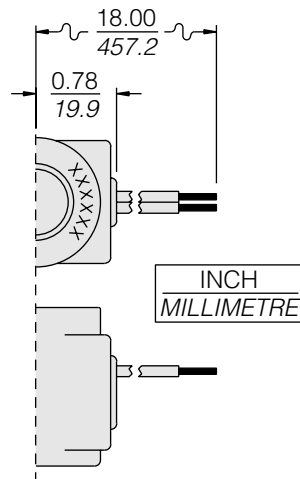
Proportional Valve Coils

SERIES EHPR08 COIL INFORMATION



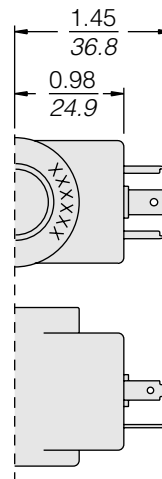
S
Dual Spades
SAE J858a

Coil EHPR_DS
STP Files



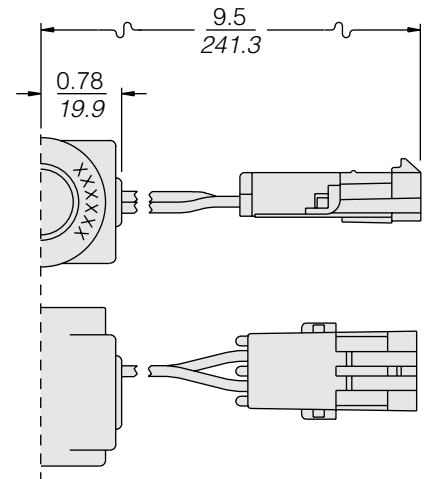
L
Dual Leads
18 Gauge
Optional 36-inch leads
available. Consult factory.

Coil EHPR_DL
STP Files



G
DIN 43650
Connector
Pins 1 and 2 are not
polarity-sensitive.
Ground pin is not used.

Coil EHPR_DG
STP Files



W
Dual 18 Gauge Leads with
Weather Pack® Connector
For use with Packard
part no. 12015792 male plug

Coil EHPR_DLW
STP Files

Voltage	Part Number Suffix			
	S	L	G	W
12 VDC	6451112	6451212	6451612	6451512
24 VDC	6451124	6451224	6451624	6451524

Coil Weight: 110 g. (4.0 oz.)