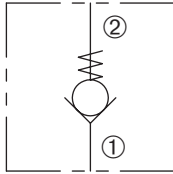


# DCV-080-PB

Direct-Acting, Ball-Type  
Check Valve



## SERIES 8



### DESCRIPTION

A cartridge valve designed to allow free flow in one direction, while preventing flow in the opposite direction. This valve is commonly used as a load-holding or blocking valve.

### OPERATION

Pressure at ① overcomes the spring-bias ball and allows free flow to ②. Flow in the opposite direction, from ② to ①, is blocked by the ball.

### FEATURES and BENEFITS

- Guide ball assembly
- Torlon® ball for positive shut-off.
- Low leak.
- Industry common cavity.

### SPECIFICATIONS

**Operating Pressure:** 3000 psi (207 bar)

**Flow:** See PRESSURE DROP VS. FLOW graph.

Nominal Flow 5 gpm (18.9 lpm)

**Internal Leakage:** Less than 2 drops/min max. at 3000 psi (207 bar)

**Crack Pressure:** 5 psi (0.3 bar)

10 psi (0.7 bar)

30 psi (2.1 bar)

60 psi (4.1 bar)

100 psi (6.9 bar)

**Temperature:** -30°F to +220°F (-35°C to +104°C)

**Recommended Filtration:** Critical Application – ISO 17/15/13

Non-Critical Application – ISO 20/18/14

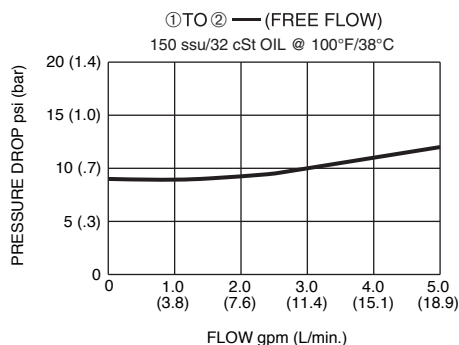
**Fluids:** Mineral-based fluids.

For other fluid compatibility, consult factory.

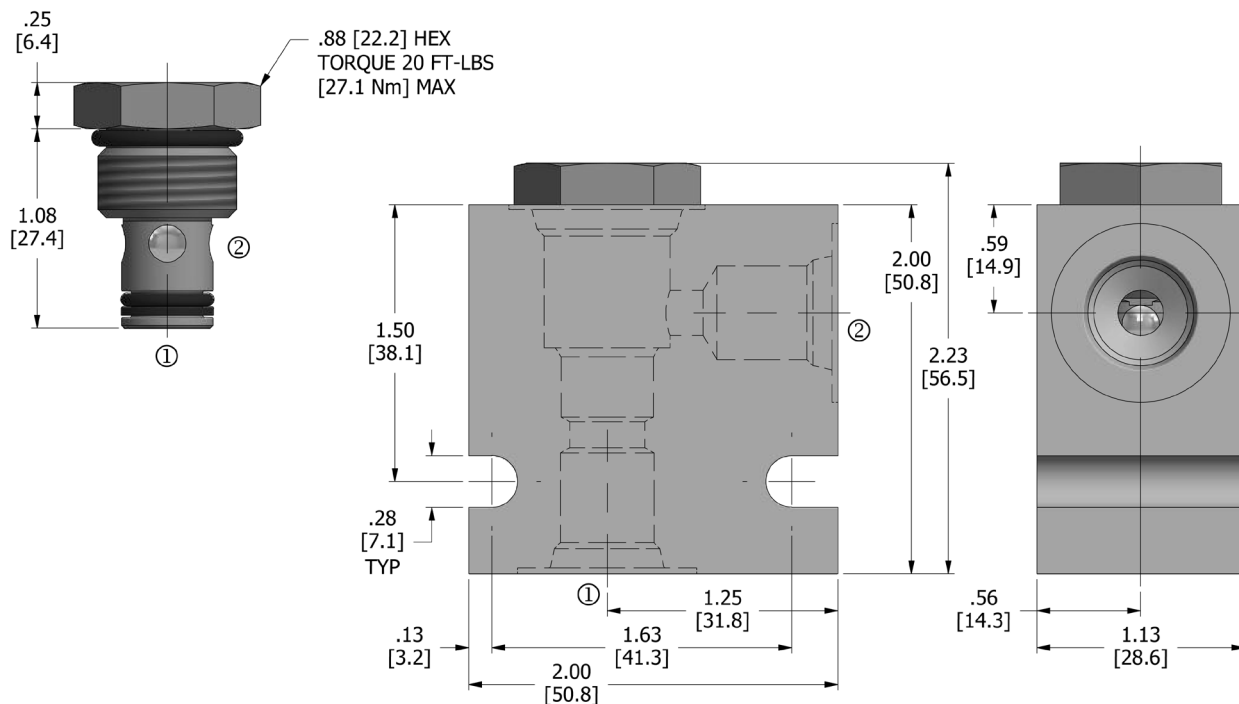
**Cavity/Cavity Tool:** 080-2, see page 11.08.2

**In-Line Body Material:** Anodized 6061T6 aluminum  
alloy rated at 3000 psi (207 bar).

### PRESSURE DROP VS. FLOW



## DIMENSIONS Inches [Millimeters]



## HOW TO ORDER

<b>DCV</b>	-	<b>080</b>	-	<b>PB</b>	-	<b>*</b>	-	<b>**</b>	-	<b>**</b>
Check Valve		Cavity		Torlon® Ball		Seals		Crack Pressure		Porting

Seals		Seal Kit
<b>N</b>	Buna N	DSK-080-2-N-A
<b>V</b>	Viton	DSK-080-2-V-A

Crack Pressure	
<b>5</b>	5 psi (0.3 bar)
<b>10</b>	10 psi (0.7 bar)
<b>30</b>	30 psi (2.1 bar)
<b>60</b>	60 psi (4.5 bar)
<b>100</b>	100 psi (6.9 bar)

Porting <sup>†</sup>		In-Line Body w/o Cartridge
omit	Cartridge only w/nut	
<b>2N</b>	1/4 PTF	B-080-2-2N
<b>3N</b>	3/8 PTF	B-080-2-3N
<b>4T</b>	SAE 4	B-080-2-4T
<b>6T</b>	SAE 6	B-080-2-6T

<sup>†</sup> Other options available – consult factory

Valve and In-Line Body are supplied individually and need to be assembled. For a completed assembly consult the factory.

All variations may not be configurable. Minimum order quantities may be required on other models. Contact Deltrol Fluid Products for complete details.