

SD-POC Double Pilot Operated Check Valve

DESCRIPTION

16 size, 1 5/16-12 thread, "Super" series, double pilot operated check valve.

OPERATION

The SD-POC allows flow to pass from (V1) to (C1) and (V2) to (C2). The valve blocks flow from (C1) to (V1) and from (C2) to (V2). Blocked flow is released when pilot pressure is applied to port opposite valve (V1) and/or port (V2) accordingly.

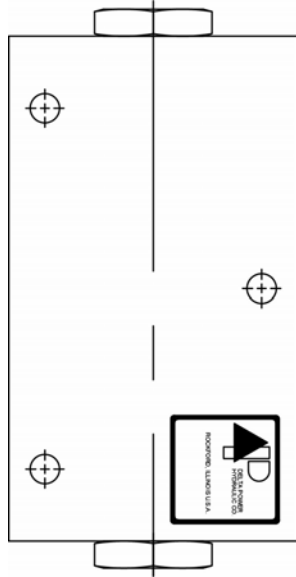
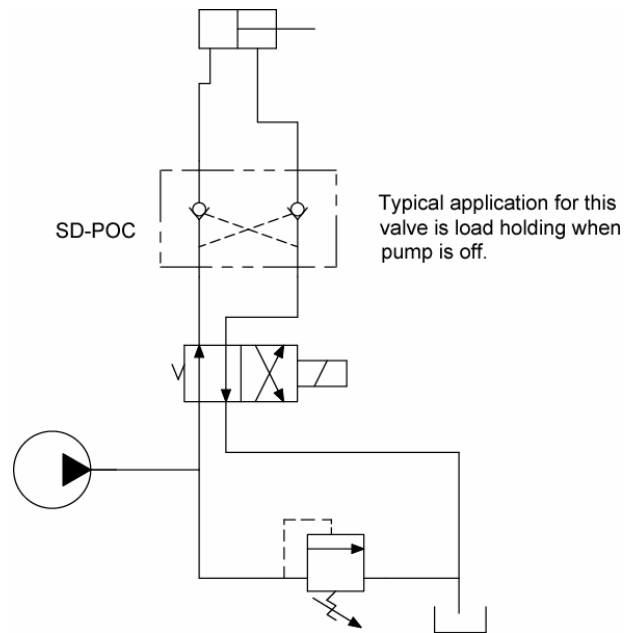
The valve has a 3.7:1 pilot ratio, so at least .267 of the load pressure at port (C1) or (C2) is required at the pilot lines (ports (V2) or (V1) respectively) to open the flow passage to allow flow from ports (C1) or (C2) respectively.

The check is spring-biased at 50 psi (3.4 bar) to assure holding in static or no-load conditions.

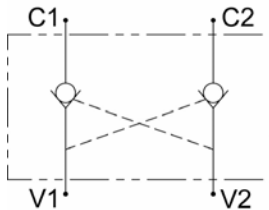
FEATURES

- Hardened internal parts for long life.
- Anodized aluminum body for corrosive protection.

TYPICAL SCHEMATIC



HYDRAULIC SYMBOL

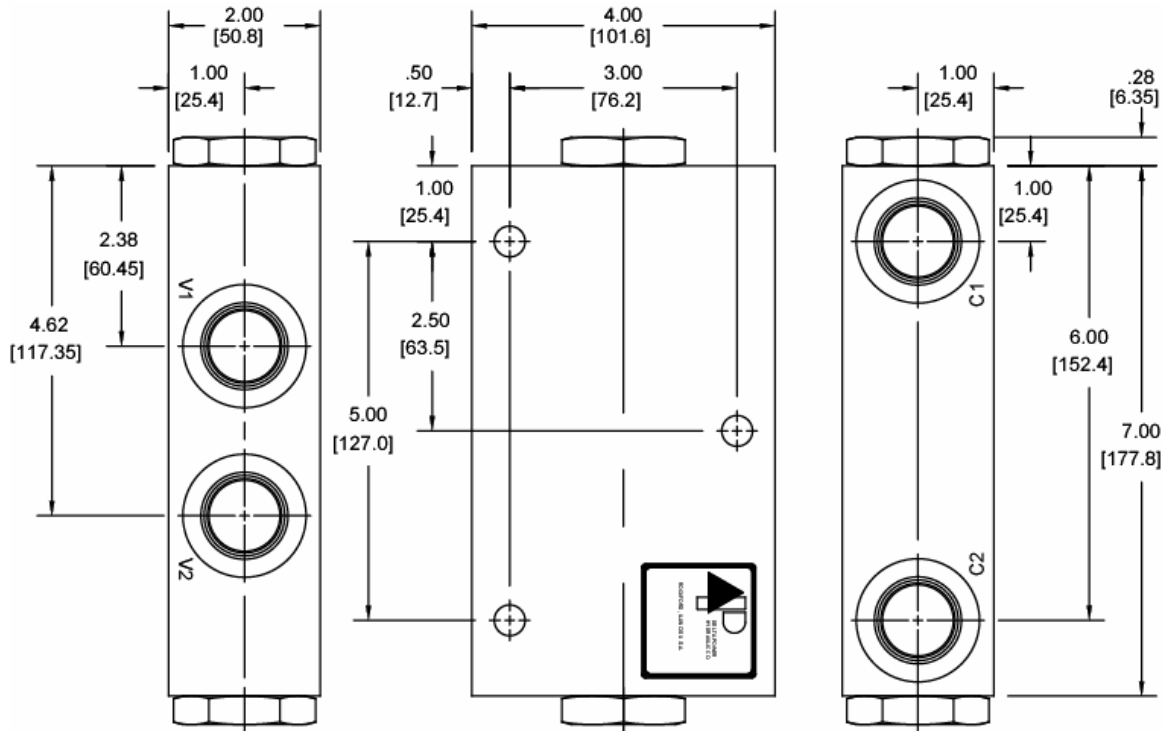


VALVE SPECIFICATIONS

Nominal Flow	40 GPM (151 LPM)
Rated Operating Pressure	3500 PSI (241 bar)
Typical Internal Leakage (150 SSU)	0-5 drops/min
Viscosity Range	36 to 3000 SSU (3 to 647 cSt)
Filtration	30 micron nominal
Pilot Ratio	3.7 : 1
Media Operating Temperature Range	-40° to 250° F (-40° to 120° C)
Weight	6.0 lbs. (2.7kg)
Operating Fluid Media	General Purpose Hydraulic Fluid
Cartridge Torque Requirements	90 ft-lbs (122 Nm)
Cartridge Crack Pressure	50 PSI (3.4 bar)

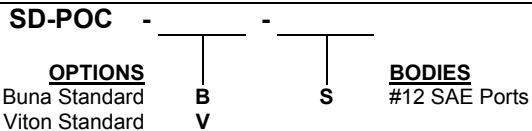
WARNING: The specifications/application data shown in our catalogs and data sheets are intended only as a general guide for the product described (herein). Any specific application should not be undertaken without independent study, evaluation, and testing for suitability.

DIMENSIONS



SAE PORTS SHOWN
 MTG. HOLES ARE .41 DIA.
 O-RINGS ARE STANDARD ON PISTON ASSEMBLY
 CHECK VALVE USED IS A SJ-CVA

ORDERING INFORMATION



WARNING: The specifications/application data shown in our catalogs and data sheets are intended only as a general guide for the product described (herein). Any specific application should not be undertaken without independent study, evaluation, and testing for suitability.

Phone: (815) 397-6628

Fax: (815) 397-2526

E-mail: delta@delta-power.com