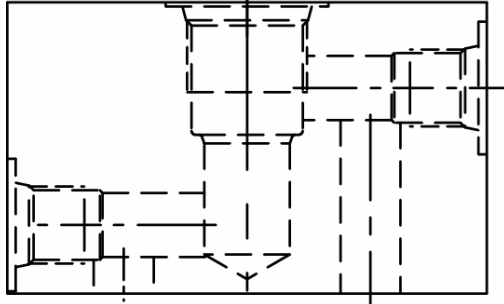


Pre-Engineered Circuit, Option Model D*

BASE BODY - 20200004 = #6 SAE



BODY WEIGHT: .83 lbs. [.37 kg.]

DESCRIPTION

Pre-engineered circuit, option model D*

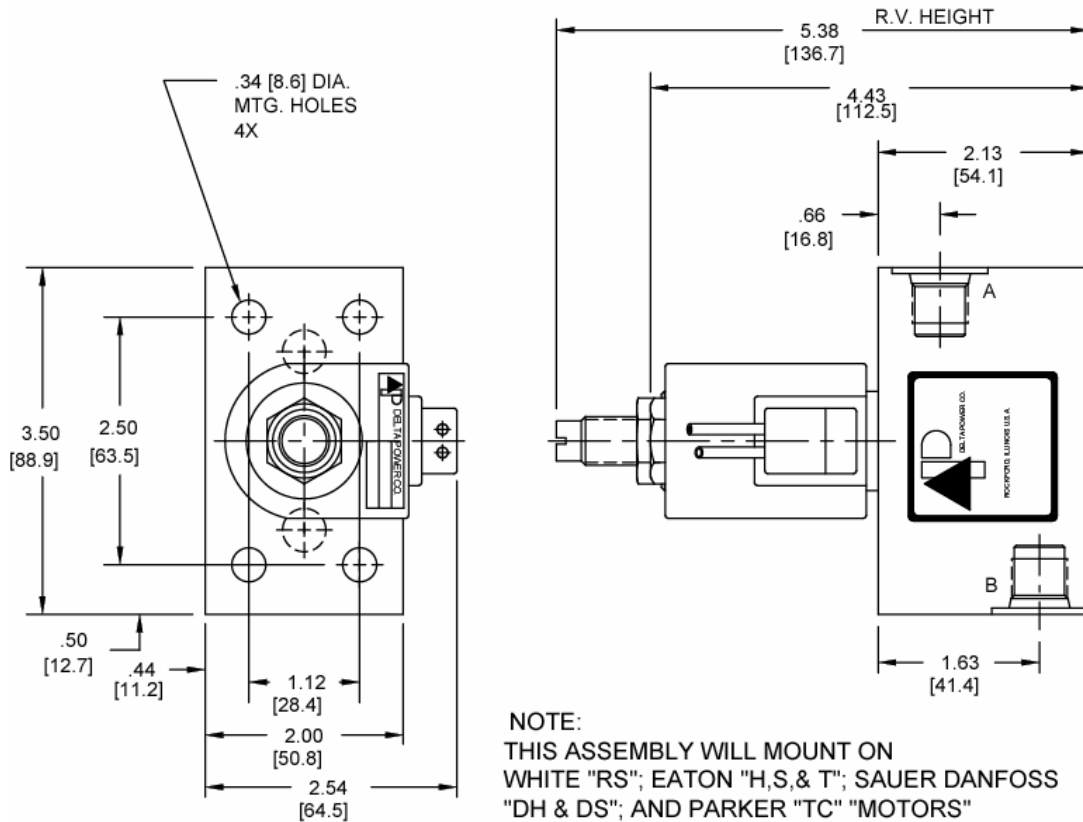
OPERATION

See options chart for specific operation

VALVE SPECIFICATIONS

Nominal Flow	See Options Chart for Flow Range
Rated Operating Pressure	See Options Chart for Pressure Ranges
Viscosity Range	36 to 3000 SSU (3 to 647 cSt)
Filtration	30 micron nominal
Media Operating Temperature Range	-40° to 250° F (-40° to 120° C)
Operating Fluid Media	General Purpose Hydraulic Fluid
Cartridge Size	Delta Series 7/8-14 Thread.
Cartridge Torque Requirements	30 ft-lbs (40.6 Nm)
Coil Torque Nut Requirements	4-6 ft-lbs. (5.4-8.1 Nm)

DIMENSIONS



NOTE:
THIS ASSEMBLY WILL MOUNT ON
WHITE "RS"; EATON "H,S, & T"; SAUER DANFOSS
"DH & DS"; AND PARKER "TC" "MOTORS"

WARNING: The specifications/application data shown in our catalogs and data sheets are intended only as a general guide for the product described (herein). Any specific application should not be undertaken without independent study, evaluation, and testing for suitability.

Phone: (815) 397-6628

Fax: (815) 397-2526

E-mail: delta@delta-power.com