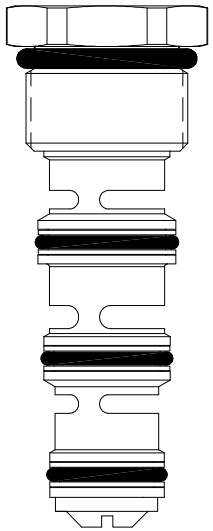


DG-FDA FLOW DIVIDER / COMBINER VALVE, SPOOL TYPE



DESCRIPTION

10 size, 7/8-14 thread "Delta Series", spool type, flow divider/combiner.

OPERATION

In the dividing mode, the DG-FDA will divert input flow from port (2) to ports (3) and (1), based on the ratio specified, regardless of operating pressure. The DG-FDA will combine input flows from ports (3) and (1), to port (2) by the same ratio. Should circuit operation result in a blockage of either (3) or (1), the opposite port may also close under certain conditions. Should this potential exist, consult the factory.

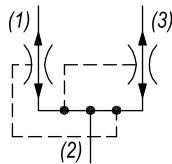
FEATURES

- Hardened parts for long life.
- Industry common cavity.



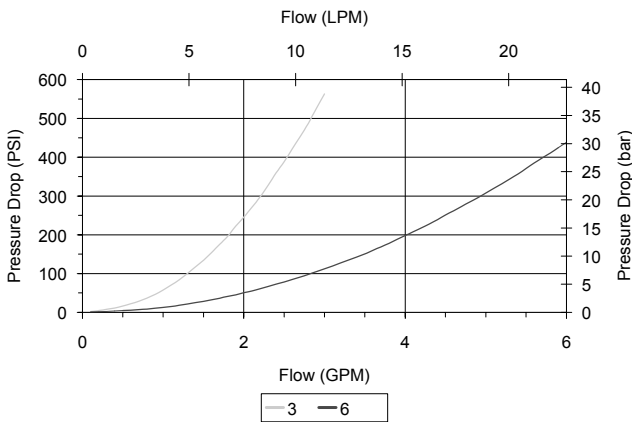
DO NOT EXCEED MAXIMUM FLOW PER MODEL
For higher accuracy flow ratio, use DG-FDH.

HYDRAULIC SYMBOL



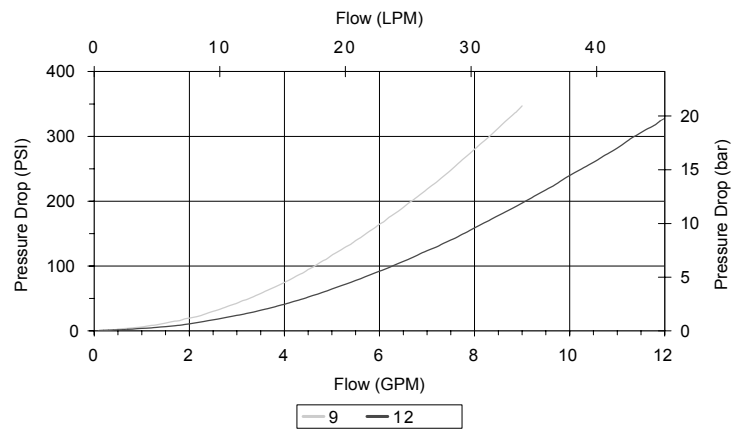
PERFORMANCE

Actual Test Data (Cartridge Only)



VALVE SPECIFICATIONS

Maximum Flow	12 GPM (45 LPM)
Accuracy on Flow Splits	±10% of Max Rated Inlet Flow
Maximum Operating Pressure	3500 PSI (241 bar)
Viscosity Range	36 to 3000 SSU (3 to 647 cSt)
Filtration	ISO 18/16/13
Media Operating Temp. Range	-40° to 250°F (-40° to 120°C)
Weight	.21 lbs (.10 kg)
Operating Fluid Media	General Purpose Hydraulic Fluid
Cartridge Torque Requirements	30 ft-lbs (40.6 Nm)
Cavity	DELTA 4W
Cavity Form Tool (Finishing)	40500002
Seal Kit	21191214



WARNING: the specifications/application data shown in our catalogs and data sheets are intended only as a general guide for the product described (herein). Any specific application should not be undertaken without independent study, evaluation, and testing for suitability.

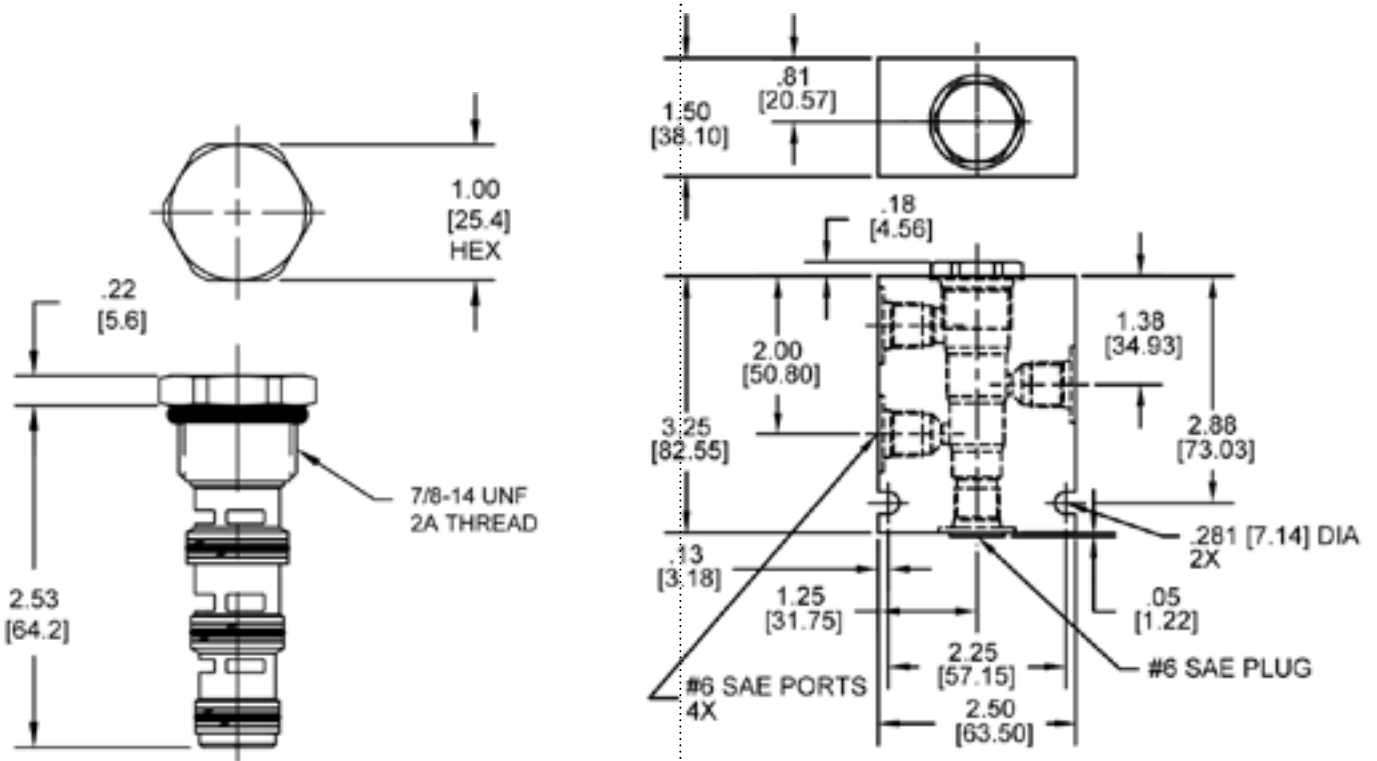


4484 Boeing Drive Rockford, IL 61109 • USA • Phone +1 (815) 397-6628 • Fax +1 (815) 397-2526
mail: delta@delta-power.com • www.delta-power.com



Via Malavolti, 36 • 41122 Modena • ITALY • Phone +39 (059) 254895 • Fax +39 (059) 253512
mail: tecnord@tecnord.com • www.tecnord.com

DIMENSIONS



Body Weight: .99 lbs (.45 kg)

ORDERING INFORMATION

DG-FDA - - - -

OPTIONS

- Buna Standard **00**
- Viton Standard **V0**

BODIES

- Blank** Without Body
- N** 1/4 NPT Ports
- S** #6 SAE Ports
- Note: must use 4-way body

SPLITS

- | | |
|--------------|-----------|
| #1 #3 | |
| 14-86 | 14 |
| 20-80 | 20 |
| 28-72 | 28 |
| 30-70 | 30 |
| 36-64 | 36 |
| 40-60 | 40 |
| 50-50 | 50 |
| 60-40 | 60 |
| 64-36 | 64 |
| 70-30 | 70 |
| 72-28 | 72 |
| 80-20 | 80 |
| 86-14 | 86 |

INLET FLOW

- 03** 2-3 GPM (50 only)
- 06** 3-6 GPM (50 only)
- 09** 6-9 GPM (50 only)
- 12** 9-12 GPM (50 only)
- **** All non 50-50 split valves (see chart below for flow ratings)

Maximum inlet flow for non 50-50 split valves	
Model code	Maximum inlet flow
30-70, 70-30	4.0 GPM
20-80, 80-20	6.0 GPM
14-86, 36-64, 64-36, 86-14	7.0 GPM
28-72, 72-28	9.0 GPM
40-60, 60-40	10.0 GPM

Consult factory for additional splits

WARNING: the specifications/application data shown in our catalogs and data sheets are intended only as a general guide for the product described (herein). Any specific application should not be undertaken without independent study, evaluation, and testing for suitability.

W6 / 2020



4484 Boeing Drive Rockford, IL 61109 • USA • Phone +1 (815) 397-6628 • Fax +1 (815) 397-2526
 mail: delta@delta-power.com • www.delta-power.com



Via Malavolti, 36 • 41122 Modena • ITALY • Phone +39 (059) 254895 • Fax +39 (059) 253512
 mail: tecnord@tecnord.com • www.tecnord.com