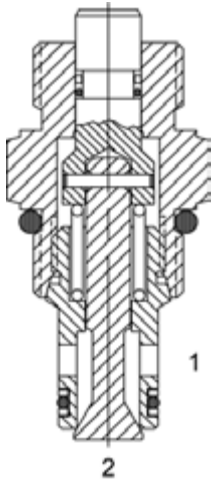


PB-MCI MANUAL POPPET VALVE, 2 WAY NORMALLY CLOSED, PUSH TYPE**DESCRIPTION**

8 size, 3/4-16 thread, "Power" series, manual poppet, 2 way normally closed, push type valve.

OPERATION

The PB-MCI blocks flow from (2) to (1) until sufficient force is applied to button to overcome spring bias and load force.

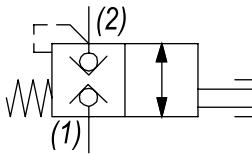
**Actuation Force Required**

| | |
|---------------|------------------------|
| No Pressure | 7 lbs |
| Side Pressure | $7 + (P1 \times .009)$ |
| Nose Pressure | $7 + (P1 \times .076)$ |

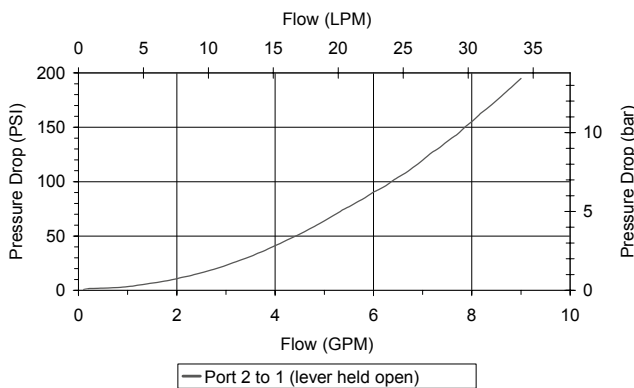
Note: ($\varnothing .437$) cavity predrill depth must be 1.312 minimum from spotface.

FEATURES

- Hardened parts for long life.
- Industry common cavity.

HYDRAULIC SYMBOL**PERFORMANCE**

Actual Test Data (Cartridge Only)

**VALVE SPECIFICATIONS**

| | |
|------------------------------------|---------------------------------|
| Nominal Flow | 8 GPM (30 LPM) |
| Rated Operating Pressure | 3500 PSI (241 bar) |
| Typical Internal Leakage (150 SSU) | Consult Factory |
| Viscosity Range | 36 to 3000 SSU (3 to 647 cSt) |
| Filtration | ISO 18/16/13 |
| Media Operating Temp. Range | -40° to 250°F (-40° to 120°C) |
| Weight | .26 lbs (.12 kg) |
| Operating Fluid Media | General Purpose Hydraulic Fluid |
| Cartridge Torque Requirements | 25 ft-lbs (34 Nm) |
| Cavity | POWER 2W |
| Cavity Form Tool (Finishing) | 40500005 |
| Seal Kit | 21191102 |

WARNING: the specifications/application data shown in our catalogs and data sheets are intended only as a general guide for the product described (herein). Any specific application should not be undertaken without independent study, evaluation, and testing for suitability.

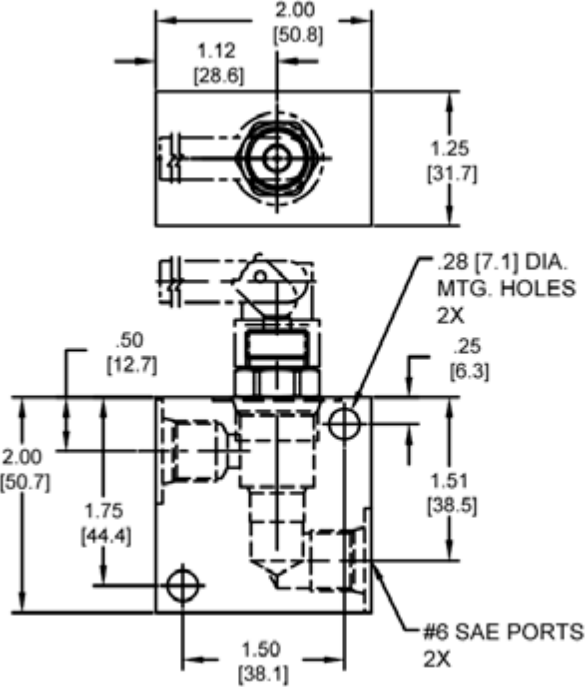
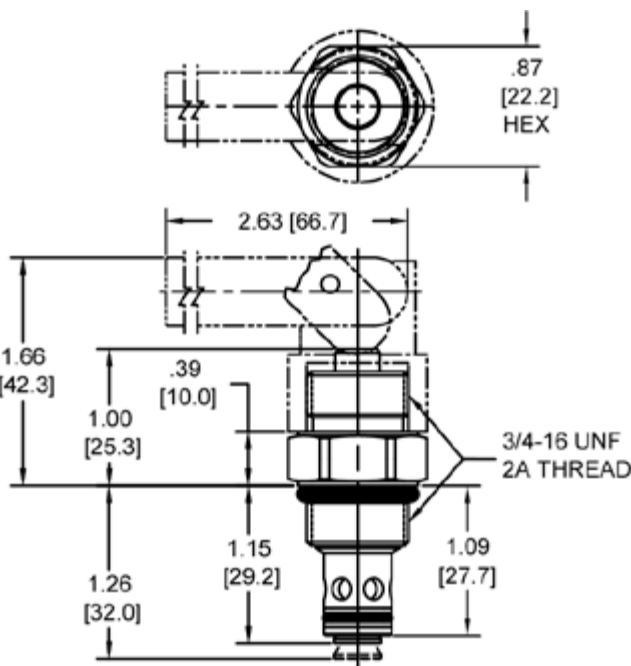


4484 Boeing Drive Rockford, IL 61109 • USA • Phone +1 (815) 397-6628 • Fax +1 (815) 397-2526
mail: delta@delta-power.com • www.delta-power.com

TECNORD

Via Malavolti, 36 • 41122 Modena • ITALY • Phone +39 (059) 254895 • Fax +39 (059) 253512
mail: tecnord@tecnord.com • www.tecnord.com

DIMENSIONS



Body Weight: .39 lbs (.18 kg)

ORDERING INFORMATION

| | | | |
|----------------------|----|-------|-----------------|
| PB-MCI | | - | - |
| OPTIONS | | | BODIES |
| Buna Standard | 00 | Blank | Without Body |
| Viton Standard | V0 | N | 1/4" NPTF Ports |
| Buna, Screen | A0 | S | #6 SAE Ports |
| Viton, Screen | W0 | | |
| Buna, Lever | 0L | | |
| Viton, Lever | VL | | |
| Buna, Screen, Lever | AL | | |
| Viton, Screen, Lever | WL | | |

Note: use screen only if flow direction is from (1) to (2).

W 7 / 2017

WARNING: the specifications/application data shown in our catalogs and data sheets are intended only as a general guide for the product described (herein). Any specific application should not be undertaken without independent study, evaluation, and testing for suitability.



4484 Boeing Drive Rockford, IL 61109 • USA • Phone +1 (815) 397-6628 • Fax +1 (815) 397-2526
mail: delta@delta-power.com • www.delta-power.com



Via Malavolti, 36 • 41122 Modena • ITALY • Phone +39 (059) 254895 • Fax +39 (059) 253512
mail: tecnord@tecnord.com • www.tecnord.com