

MS-POC Single Pilot Operated Check Valve

DESCRIPTION

7 size, 5/8-18 thread, "Mini" series, pilot operated check valve.

OPERATION

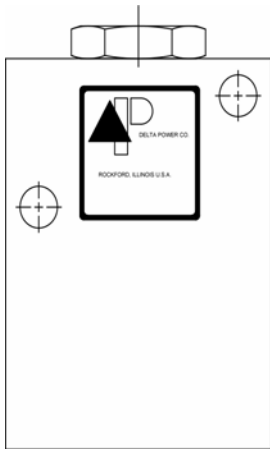
The MS-POC allows flow to pass from (V) to (C) and blocks flow from (C) to (V). When pilot pressure is applied to pilot port the valve allows flow from (C) to (V).

The valve has a 6.7:1 pilot ratio, so at least .149 of the load pressure is required at the (PILOT) port to open the flow passage to allow flow from ports (C).

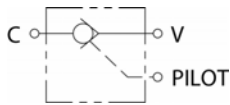
The check is spring-biased at 50 psi (3.4 bar) to assure holding in static or no-load conditions.

FEATURES

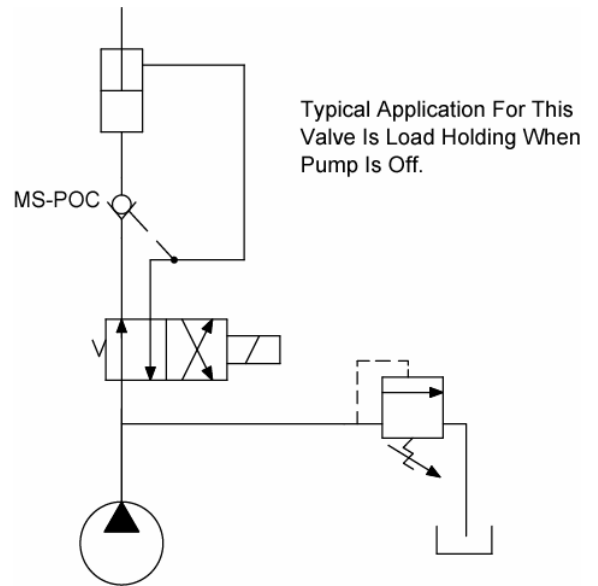
- Hardened internal parts for long life.
- Anodized aluminum body for corrosion protection.



HYDRAULIC SYMBOL



TYPICAL SCHEMATIC

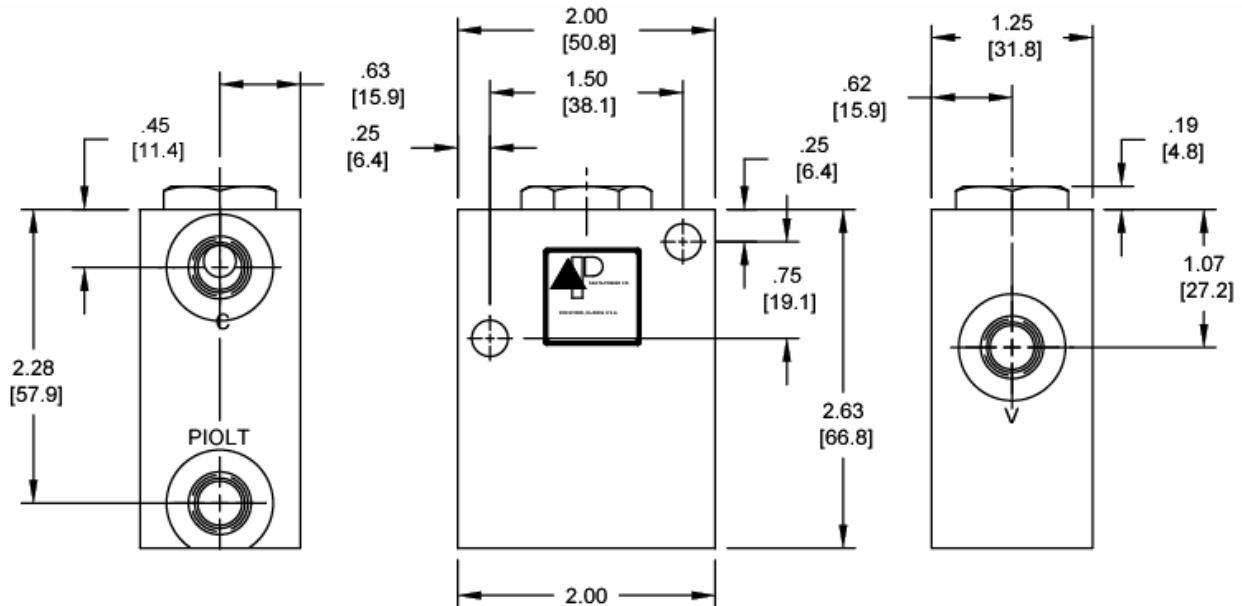


VALVE SPECIFICATIONS

Nominal Flow	5 GPM (19 LPM)
Rated Operating Pressure	3000 PSI (207 bar)
Typical Internal Leakage (150 SSU)	0-5 drops/min
Viscosity Range	36 to 3000 SSU (3 to 647 cSt)
Filtration	30 micron nominal
Pilot Ratio	6.7:1
Media Operating Temperature Range	-40° to 250° F (-40° to 120° C)
Weight	.7 lbs. (.30 kg)
Operating Fluid Media	General Purpose Hydraulic Fluid
Cartridge Torque Requirements	15 ft-lbs (20.3 Nm)
Cartridge Crack Pressure	50 PSI (3.4 bar)

WARNING: The specifications/application data shown in our catalogs and data sheets are intended only as a general guide for the product described (herein). Any specific application should not be undertaken without independent study, evaluation, and testing for suitability.

DIMENSIONS



SAE PORTS SHOWN
MTG. HOLES ARE .28 DIA.
O-RINGS ARE STANDARD ON PISTON ASSEMBLY
CHECK VALVE USED IS A MA-CVA

ORDERING INFORMATION

MS-POC - - -			
OPTIONS			BODIES
Buna Standard	B	N	1/4 NPTF Ports
Viton Standard	V	S	#4 SAE Ports

WARNING: The specifications/application data shown in our catalogs and data sheets are intended only as a general guide for the product described (herein). Any specific application should not be undertaken without independent study, evaluation, and testing for suitability.

Phone: (815) 397-6628

Fax: (815) 397-2526

E-mail: delta@delta-power.com