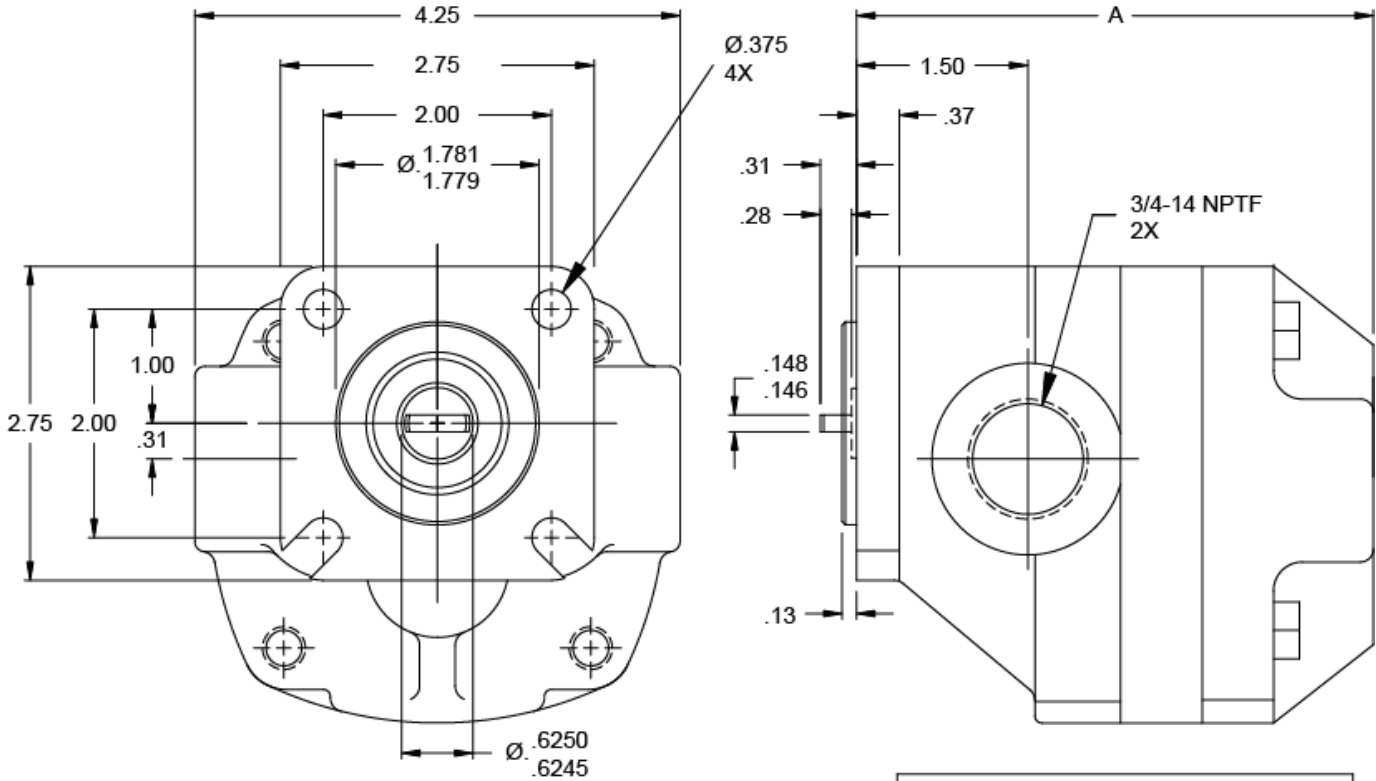
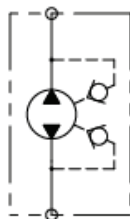
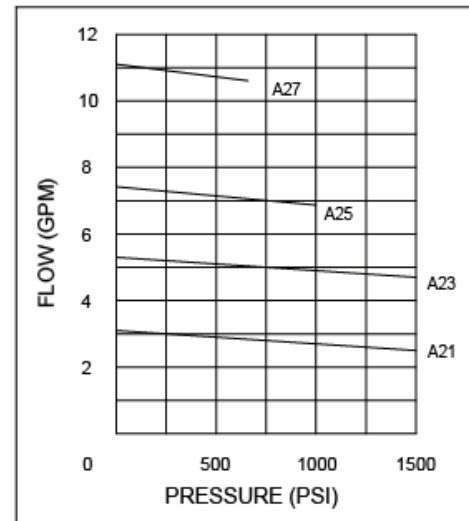




A21-A27 Pump, Bi-Directional



For best performance: Inlet pressure should not exceed 10 PSI and vacuum should be limited to 8 inches of mercury at the pump. Inlet lines always must be large, straight, short and absolutely leak-proof, even more so as RPM increases. Suggested maximum inlet velocity is 6 feet per second.



HYDRAULIC SCHEMATIC

MODEL	GPM AT 1750 RPM	0 PSI DISP. GAL./REV.	DISP. CU. IN./REV.	SLIP GPM PER 100 PSI	MAX. RPM	PRESS. MAX. CONTINUOUS	A
A21	3.10	0.00178	0.411	0.040	5000	1500	4.24
A23	5.30	0.00304	0.702	0.045	4000	1500	4.54
A25	7.42	0.00425	0.981	0.055	3500	1000	4.76
A27	11.10	0.00633	1.460	0.075	2400	700	5.32

WARNING: The specifications/application data shown in our catalogs and data sheets are intended only as a general guide for the product described (herein). Any specific application should not be undertaken without independent study, evaluation, and testing for suitability.