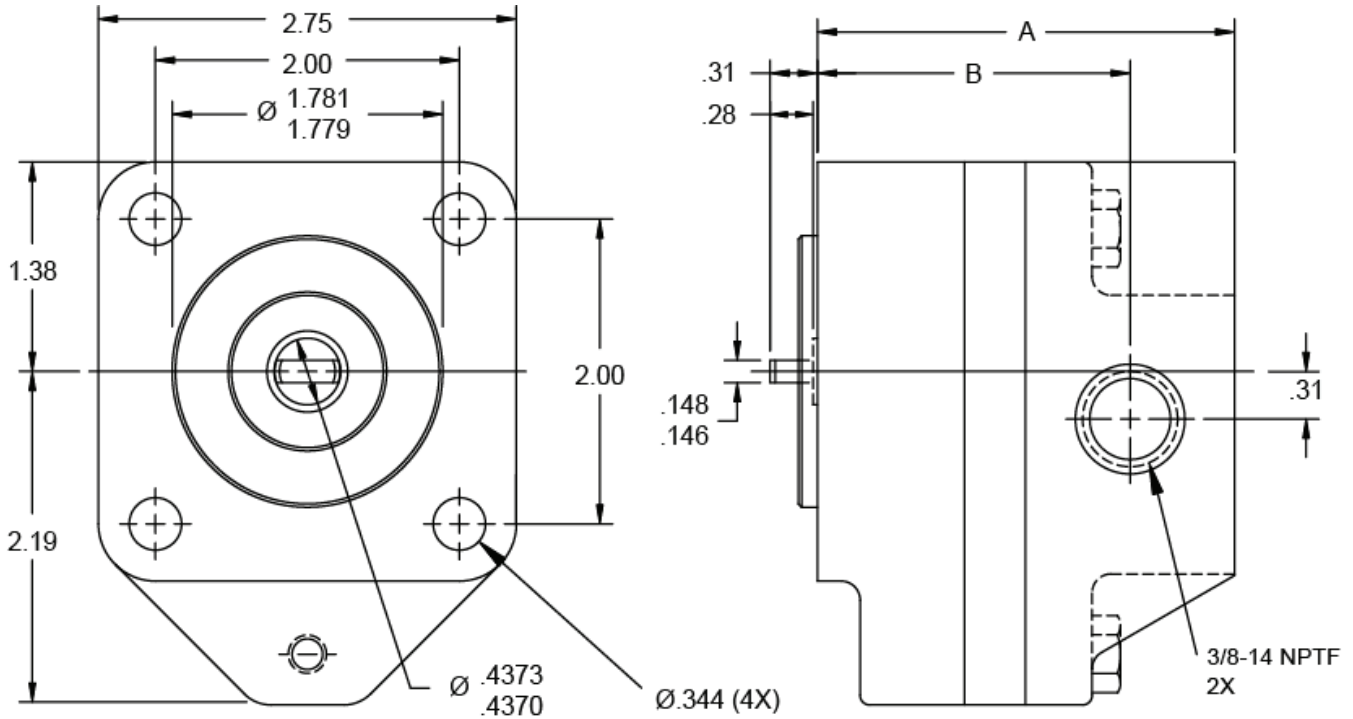
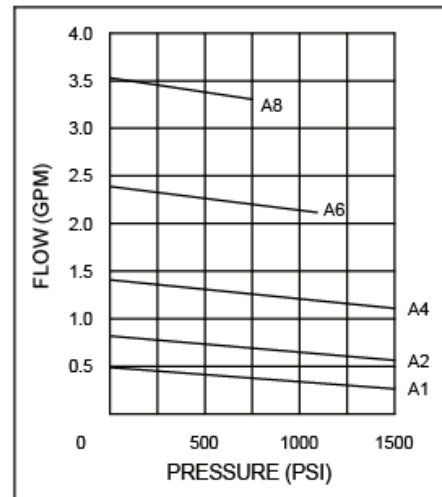
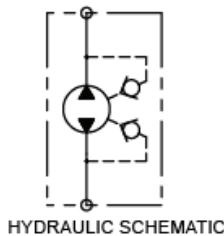


A1-A8 Pump, Bi-Directional



For best performance: Inlet pressure should not exceed 10 PSI and vacuum should be limited to 8 inches of mercury at the pump. Inlet lines always must be large, straight, short and absolutely leak-proof, even more so as RPM increases. Suggested maximum inlet velocity is 6 feet per second.



MODEL	GPM AT 1750 RPM	0 PSI DISP. GAL./REV.	DISP. CU. IN./REV.	SLIP GPM PER 100 PSI	MAX. RPM	PRESS. MAX. CONTINUOUS	A	B
A1	0.49	0.00028	0.065	0.015	5000	1500	2.48	1.79
A2	0.82	0.00047	0.108	0.017	5000	1500	2.57	1.88
A4	1.41	0.00081	0.187	0.020	4000	1500	2.74	2.05
A6	2.39	0.00137	0.316	0.025	3600	1100	3.02	2.33
A8	3.53	0.00202	0.468	0.030	2500	750	3.34	2.65

WARNING: The specifications/application data shown in our catalogs and data sheets are intended only as a general guide for the product described (herein). Any specific application should not be undertaken without independent study, evaluation, and testing for suitability.