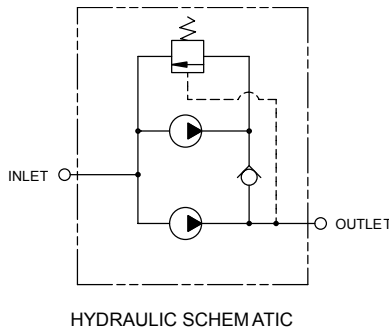
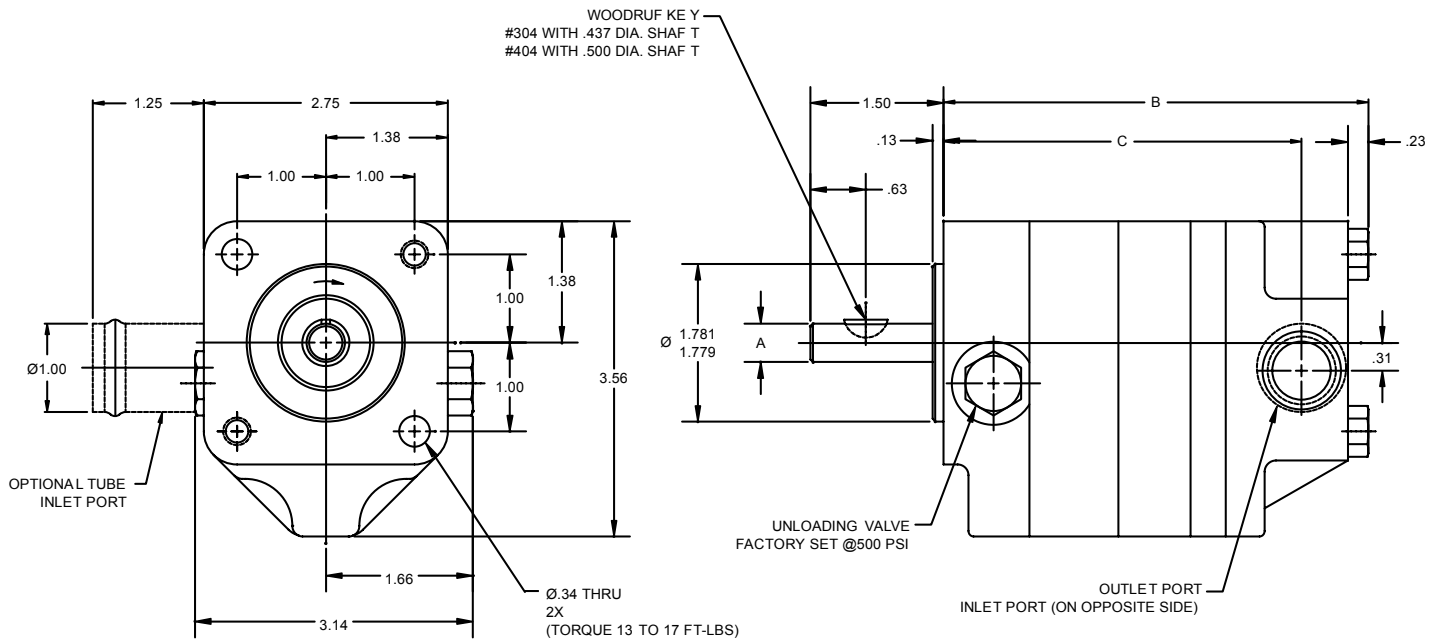


L6 and L8 Series 2 Stage HI-LO Pumps



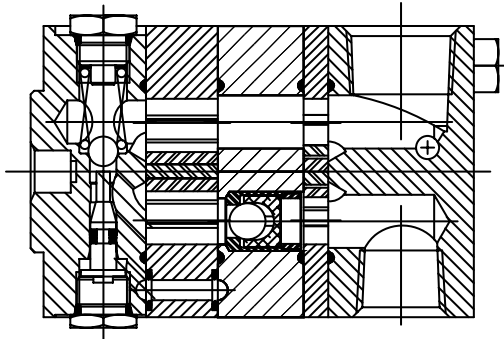
Unloading Valve is factory set at 500 PSI.
 Rotation: All models rotate clockwise facing pump shaft or drive end (CWDE).
 Mounting: 4F17 four bolt all models.

MODEL	0 PSI DISP. IN ³ /REV	MAX. PSI	MAX. RPM	~GPM AT 3450 RPM	HP REQUIRED	INLET	OUTLET	A	B	C
L6-2	.316 +.108	3000	3600	6.0\1.0	4	3/4 NPTF	1/2 NPTF	0.437	4.29	3.37
L8-4	.468 + .187	3000	3600	9.0\2.0	6	3/4 NPTF	1/2 NPTF	0.437	4.79	3.87

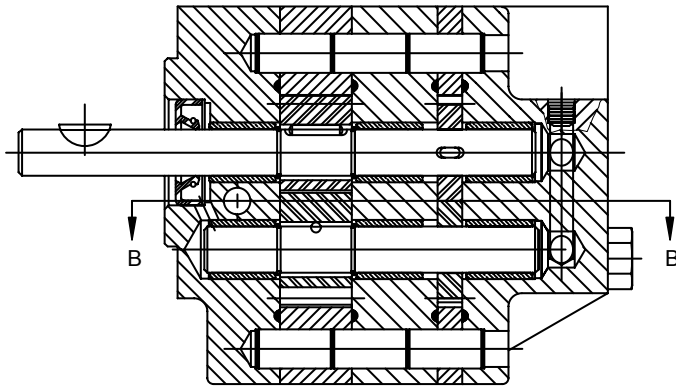
Note: Displacement given as larger gear set + smaller gear set.
 ~ GPM given as combined flow\sequenced flow.
 Operation @1725 RPM will give ~ 50% of combined flow and ~ 40% of sequenced flow.

WARNING: The specifications/application data shown in our catalogs and data sheets are intended only as a general guide for the product described (herein). Any specific application should not be undertaken without independent study, evaluation, and testing for suitability.

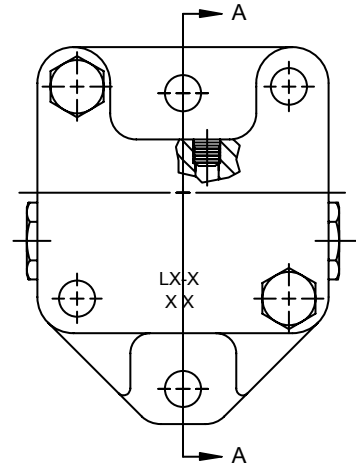
L6 and L8 Series 2 Stage HI-LO Pumps



SECTION B-B



SECTION A-A



WARNING: The specifications/application data shown in our catalogs and data sheets are intended only as a general guide for the product described (herein). Any specific application should not be undertaken without independent study, evaluation, and testing for suitability.