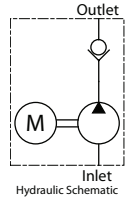
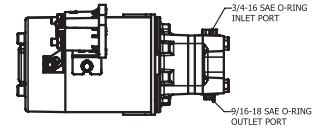
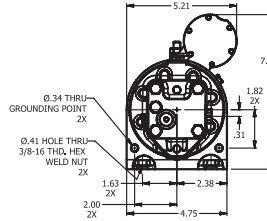
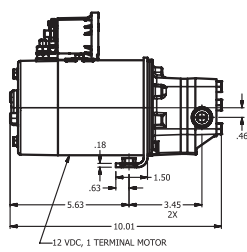
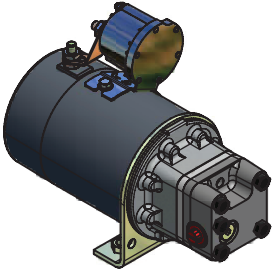


Pump / Motor DC Unit - 12 VDC

• Commonly referred to as an "emergency" or "backup" pump • For use where a self contained system is not required • Inlet port is #8 SAE Oring and outlet port is #6 SAE Oring • Unit has no relief valve • 3000 PSI capable • Mount in any position



Stock Number	500 PSI Performance			1000 PSI Performance			1500 PSI Performance			2000 PSI Performance			Ship Wt.
	GPM	Amps	Duty Cycle	GPM	Amps	Duty Cycle	GPM	Amps	Duty Cycle	GPM	Amps	Duty Cycle	
6103400	2.90	130	29%	2.00	170	22%	1.40	205	19%	1.10	245	15%	28

* Duty cycle percentage is "on time" per 5 minutes. Example: 15% = 45 seconds on and 4.25 minutes off.