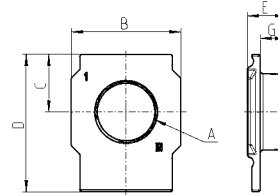


Terminal flanges (IN/OUT) for series MX (Threaded End-plates)

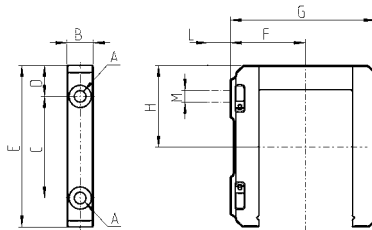


The kit is supplied with:
 - n°1 flange INLET side
 - n°1 flange OUTLET side



DIMENSIONS (in inches)						
Mod.	A (NPTF)	B	C	D	E	G
MX2-3/8-FL-TF	3/8	1.969	1.043	2.500	0.669	0.433
MX2-1/2-FL-TF	1/2	1.969	1.043	2.500	0.669	0.433
MX2-3/4-FL-TF	3/4	1.969	1.043	2.500	0.669	0.433
MX3-3/4-FL-TF	3/4	2.283	1.201	2.874	0.807	0.531
MX3-1-FL-TF	1	2.283	1.201	2.874	0.807	0.531

Rapid clamps kit for series MX



Kit MX2-X supplied with: 1 rapid clamp, 1 O-ring OR 3125**, 2 hexagonal nuts M5, 2 screws M5x69.

Kit MX2-Z supplied with: 1 rapid clamp, 1 O-ring OR 3125**, 1 hexagonal nut M5, 1 screw M5x69, 1 screw M5x85 for wall fixing.

** OR 3125 can be ordered separately (cod. 160-39-11/19)

Materials: technopolymer clamp, NBR O-ring, zinc-plated steel nuts and screws.

DIMENSIONS (in inches)										
Mod.	A	B	C	D	E	F	G	H	L	M
MX2-X	0.205	0.472	1.811	0.551	2.894	1.476	2.776	1.457	-	-
MX2-Z	0.205	0.472	1.811	0.551	2.894	1.476	2.776	1.457	0.551	M5 *
MX3-X	0.244	0.551	2.126	0.650	3.386	1.575	3.031	1.713	-	-
MX3-Z	0.244	0.551	2.126	0.650	3.386	1.575	3.031	1.713	0.512	M6 *

* kit with wall mounting screw

The kit MX3-X is supplied with:
 n° 1 rapid clamp, n° 1 O-ring, OR 3150 **
 n° 2 square nuts, n° 2 screws M6x75

The kit MX3-Z is supplied with:
 n° 1 rapid clamp, n° 1 O-ring, OR 3150 **
 n° 1 square nut, n° 1 screw M6x75,
 n° 1 screw M6x90 for direct wall-mounting

**OR 3150 can be ordered separately (mod. C401-F33)

Rapid clamp kit with wall mount brackets for series MX

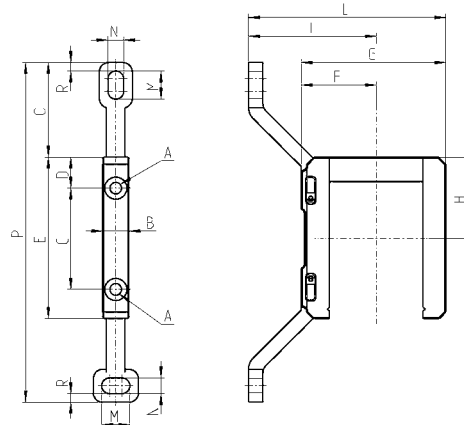


The kit MX3-Y is supplied with:
 n° 1 wall rapid clamp, n° 1 O-ring, OR 3150 **
 n° 2 square nuts, n° 2 screws M6x75
 **OR 3150 can be ordered separately (mod. C401-F33)

The kit MX2-Y is supplied with:
 1 wall rapid clamp, 1 O-ring OR 3125 **, 2 hexagonal nuts, 2 screws M5x69.

** OR 3125 can be separately ordered (mod. 160-39-11/19)

Materials: technopolymer clamp, NBR O-ring, zinc-plated steel nuts and screws.



DIMENSIONS (in inches)															
Mod.	A	B	C	D	E	F	G	H	I	L	M	N	O	P	R
MX2-Y	0.205	0.472	1.811	0.551	2.894	1.280	2.776	1.457	2.776	4.055	0.472	0.256	1.654	5.984	0.157
MX3-Y	0.244	0.551	2.126	0.650	3.386	1.575	3.031	1.713	2.677	4.134	0.591	0.331	1.988	7.126	0.177