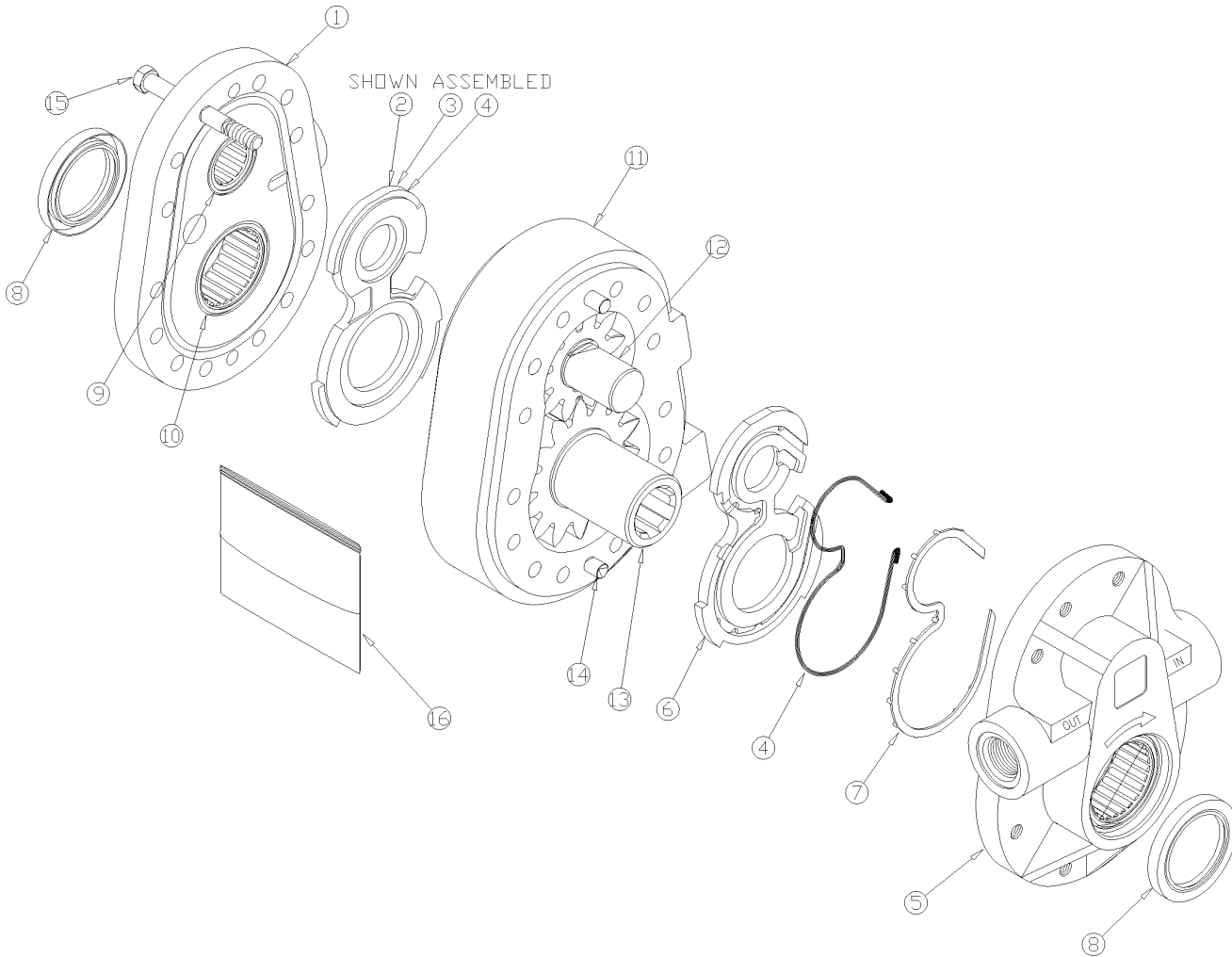


Pump PTO 9.9 CI/REV. (841-297C)

Applies to HRS18, HRS23



27696

Pump PTO 9.9 CI/REV. (841-297C)**Applies to HRS18, HRS23**

Ref	Part No.	Part Description	Comments	Revision
	dwg27696 841-297C	Drawing Image Number PTO PUMP 9.9 CI/REV. *		
1.	500101004	FRONT PLATE WITH PORT		
2.	500107029	WEAR PLATE (FRONT)		
3.	500107042	FRONT PLAT MOLDED SEAL	In Kit #16	
4.	500107032	WEAR PLATE O-RING STOCK	In Kit #16	
5.	500101014	REAR PLATE		
6.	500107028	WEAR PLATE (BACK)		
7.	500107043	BACK PLATE MOLDED SEAL	In Kit #16	
8.	240016026	PTO SHAFT SEAL	In Kit #16	
9.	210500083	TANDEM ROLLER BEARING		
10.	211100071	ROLLER BEARING		
11.	500103033	BODY, HC-PTO-1AC		
12.	500106002	IDLER GEAR ASS'Y,HC-PTO-1AC		
13.	500106021	DRIVE GEAR ASS'Y, HC-PTO-1AC		
14.	180900872	DOWEL PIN, HC-PTO-1AC		
15.	170002074	CAP SCREW, HC-PTO-1AC		
16.	PMCK-PTO-1A	PRINCE SEAL KIT		