

# AIR OIL COOLERS

Air Oil Coolers are used to cool fluid power systems, gear drives, machine tools, torque converters and hydraulic presses.

## Standard Features:

### • Oil Cooler

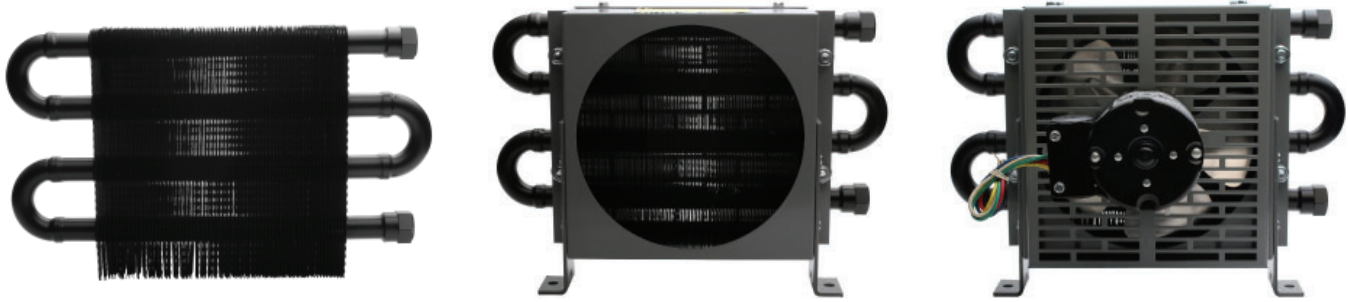
- Rugged construction that resists vibration
- 1/2 inch NPT internal thread mounting connection

### • TEFC Rear Mount Oil Cooler

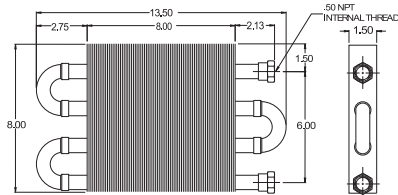
- Compact, efficient design
- Low cost case drain cooling
- Mounts behind existing TEFC motor
- Mounting brackets and gasket
- Operating Pressure - 300 PSI
- Operating Temperature - 350°F
- Air filter has Stainless Steel frame with washable media

### • AC Fan Driven Oil Cooler

- Compact, quiet, efficient design
- Rugged construction resists vibration and stress
- Mounting brackets included
- Operating Pressure - 300 PSI
- Operating Temperature - 350°F
- Air filter has Stainless Steel frame with washable media



## OILCOOLER

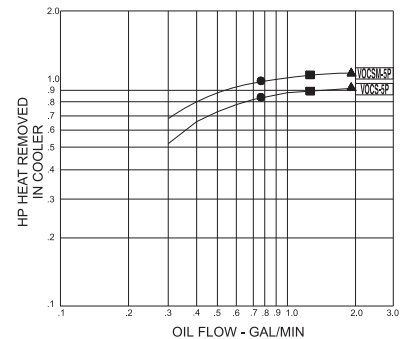


- Highly Efficient Design
- Rugged Construction Resists Vibration

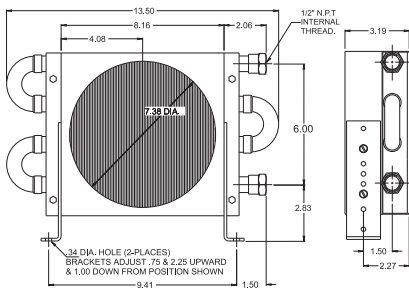
### Order Data / Specifications

Part No.	Flow Range (GPM)	HP Heat Removed	Piece Weight (lbs)
VOC-5-P	0.3-2	1.0	3.0

## PERFORMANCE CURVES



## TEFC REAR MOUNTED OIL COOLER



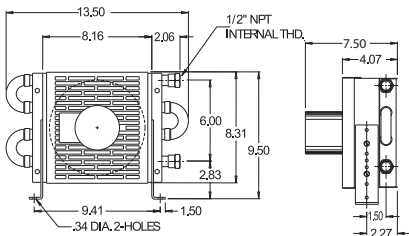
Bracket Adjustment .75 inch and 2.25 inches Upward 1.00 inch Downward (from position shown)

- Uses air stream from fan of electric motor
- Sized to fit popular electric motor frame sizes
- Durable powder painted cabinet
- Maximizes efficiency with contoured air side fins and internal oil turbulators
- Includes motor gasket and mounting bracket
- Fits Nema frame sizes 48 thru 184T

### Order Data / Specifications

Part No.	Flow Range (GPM)	HP Heat Removed	Piece Weight (lbs)
VOCS-5-P	0.3-2	1.0	6.0

## FORCED AIR OIL COOLER



Bracket Adjustment .75 inch and 2.25 inches Upward 1.00 inch Downward (from position shown)

**NOTE:** All dimensions are inches

- Compact, highly efficient design with contoured side fins and internal oil turbulators
- Rugged construction resists vibration and stress
- Eliminates sewer and water costs
- Mounting bracket included for easy installation
- Motor voltage 115/230 single phase, 50/60 hertz, 1.2/.60 amps

### Order Data / Specifications

Part No.	Flow Range (GPM)	HP Heat Removed	Piece Weight (lbs)
VOCSM-5-P	0.3-2	1.0	13.0

• VOC-5-P Performance: D-Rate VOCS-DP Curve by 25 % (When used behind TEFC motor)

• Curves are based in a 40°F approach temperature (oil out °F-amb air °F)

• Oil Press Drop Coding

- = 5 PSI
- = 10 PSI
- ▲ = 20 PSI

• Average Oil Viscosity = 100 SSU for performance rating

• All models above:

- Maximum Pressures — 300 P.S.I.
- Maximum Temperature — 350° F

Dimensions and specifications are subject to change without notice. Not all items are Made-To-Stock, contact us for availability.

02/14

Ph : 920-682-6877  
Fx : 920-684-7210



sales@ldi-industries.com  
www.ldi-industries.com