

# SIGHT GAGES - CLOSED CIRCUIT

## G607 SERIES

The G607 Series front mount closed circuit sight gages provide front viewing of the fluid level clearly delineated by a redline on white background integral to the glass sight all secured within an aluminum body (HIGH-LOW markings). Brass pipe adapters are provided with the sight gages for direct assembly of the sight gage to NPT couplings.

### Standard Features:

- Front mount
- Fluid level visible from front of gage (.50 inches wide)
- Viewing enhanced by redline on white background integral to sight glass
- Suitable for use with most hydraulic and machine lubricating oils

### Standard Materials:

- Aluminum gage body and mounting bolts
- Brass pipe adapters
- Buna N seals
- Borosilicate glass sight

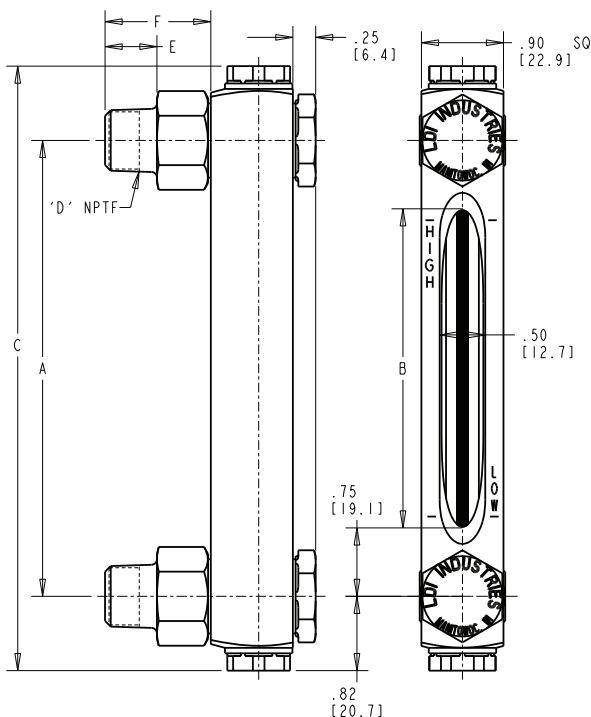
### Temperature and Pressure Ratings:

- Please refer to Appendix RA-1 on page RA-A1 for Sight Opening & Pressure Rating information
- Please refer to Temperature Ratings by Seal Material for additional operating conditions (Appendix RA-5 on page RA-A5)

### NOTE:

- Please refer to Appendix RA-117 on page RA-A7RA-A7 for installation instructions

**CAUTION:** - Not recommended for use with water, steam, acidic fluids, caustic fluids and volatile fluids



G607 Series			Pipe Adapter		
A inches (mm)	B inches (mm)	C inches (mm)	D NPTF	E inches (mm)	F inches (mm)
3.00 (76.20)	1.50 (38.10)	4.62 (117.35)	1/4-18	.57 (14.48)	1.22 (30.99)
4.00 (101.60)	2.50 (63.50)	5.62 (142.75)	3/8-18	.57 (14.48)	1.16 (29.46)
5.00 (127.00)	3.50 (88.90)	6.62 (168.15)	1/2-14	.76 (19.30)	1.16 (29.46)
6.00 (152.40)	4.50 (114.30)	7.62 (193.55)	3/4-14	.76 (19.30)	1.16 (29.46)
7.00 (177.80)	5.50 (139.70)	8.62 (218.95)			
8.00 (203.20)	6.50 (165.10)	9.62 (244.35)			
9.00 (228.60)	7.50 (190.50)	10.62 (269.75)			
10.00 (254.00)	8.50 (215.90)	11.62 (295.15)			
11.00 (279.40)	9.50 (241.30)	12.62 (320.55)			
12.00 (304.80)	10.50 (266.70)	13.62 (345.95)			



**NOTE:** All dimensions are inches [mm]

### ORDERING OPTIONS CODES:

#### BODY MATERIAL

- A- Aluminum gage body (standard)
- B- Brass gage body (optional)
- S- Steel gage body (optional)
- Y- Stainless Steel gage body (optional)

#### SEAL MATERIAL

- 1- Buna N seals (standard)
- 2- Butyl seals (optional)
- 3- Viton® seals (optional)
- 4- Ethylene propylene seals (optional)
- 5- Silicone seals (optional)

#### SPECIFY PIPE THREAD SIZE:

- 2- 1/4 male pipe thread
- 3- 3/8 male pipe thread
- 4- 1/2 male pipe thread
- 5- 3/4 male pipe thread

### HOW TO ORDER

#### EXAMPLE:

**G607-06-A-1-4** — 1/2 inch pipe thread  
 — Buna N Seals  
 — Aluminum gage body  
 — 6.00 (152.40 mm) mounting centers  
 — Series G607

Dimensions and specifications are subject to change without notice. Not all items are Made-To-Stock, contact us for availability.

02/14

Ph : 920-682-6877  
 Fx : 920-684-7210



sales@ldi-industries.com  
 www.ldi-industries.com