

NOISE & VIBRATION DAMPENING DEVICES

DAMPENING BARS - WELDABLE

Motor Dampening Bars are designed to reduce vibration and structure borne noise levels from the motor to the mounting surface.

Standard Features:

- Average expected reduction of structure borne noise is 3 - 4 dBA
- Full mounting range for NEMA frame motors
- Two are required per motor
- Horizontal installation only

Standard Materials:

- Natural rubber vulcanized bonded to carbon steel

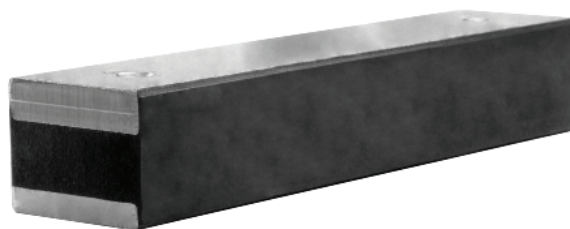
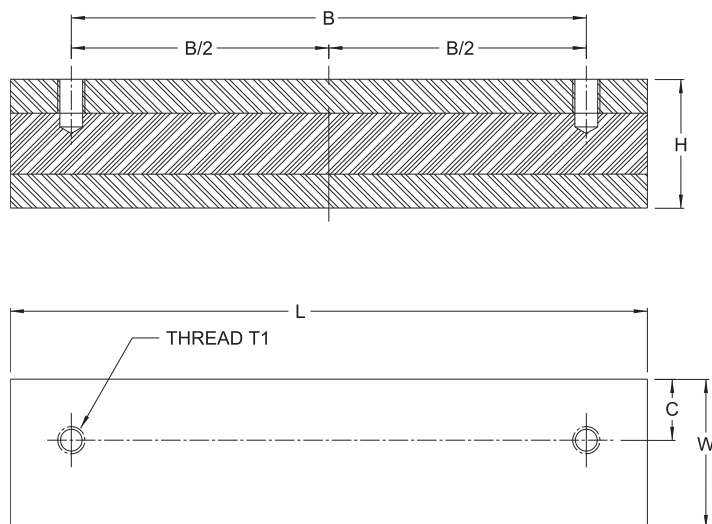
Temperature Ratings:

- Recommended operating temperature is -40° to 167° F (75°C).

NOTE:

- Please refer to Appendix RA-4 on page RA-A4 for welding instructions

Caution: Not intended for use in vertical applications



Motor Dampening Bars - Weldable

Part No.	Motor Size	Dimensions (inches)					T1 (NC)
		L	W	H	B	C	
VSM-56-W	56C	4.75	2.00	1.56	3.00	.88	5/16-18
VSM-143-W	143TC	5.50	2.00	1.56	4.00	.81	5/16-18
VSM-145-W	145TC	6.50	2.00	1.56	5.00	.81	5/16-18
VSM-182-W	182TC	6.00	2.00	1.56	4.50	.94	3/8-16
VSM-184-W	184TC	7.00	2.00	1.56	5.50	.94	3/8-16
VSM-213-W	213TC	7.75	2.00	1.56	5.50	.94	3/8-16
VSM-215-W	215TC	9.00	2.00	1.56	7.00	.94	3/8-16
VSM-254-W	254TC	10.50	2.00	1.75	8.25	.94	1/2-13
VSM-256-W	256TC	12.25	2.00	1.75	10.00	.94	1/2-13
VSM-284-W	284TC/TSC	12.00	2.75	2.38	9.50	1.12	1/2-13
VSM-286-W	286TC/TSC	13.25	2.75	2.38	11.00	1.12	1/2-13
VSM-324-W	324TC/TSC	12.50	3.00	2.38	10.50	1.56	5/8-11
VSM-326-W	326TC/TSC	14.00	3.00	2.38	12.00	1.56	5/8-11
VSM-364-W	364TC/TSC	13.50	3.00	2.38	11.25	1.56	5/8-11
VSM-365-W	365TC/TSC	14.50	3.00	2.38	12.25	1.56	5/8-11
VSM-404-W	404TC/TSC	15.50	4.00	2.38	12.25	2.00	3/4-10
VSM-405-W	405TC/TSC	17.00	4.00	2.38	13.75	2.00	3/4-10
VSM-444-W	444TC/TSC	19.50	4.50	2.38	14.50	2.25	3/4-10
VSM-445-W	445TC/TSC	21.00	4.50	2.38	16.50	2.25	3/4-10
VSM-447-W	447TC/TSC	26.00	4.50	2.38	20.00	2.31	3/4-10
VSM-449-W	449TC/TSC	31.00	4.50	2.38	25.00	2.31	3/4-10

Dimensions and specifications are subject to change without notice. Not all items are Made-To-Stock, contact us for availability.

06/20

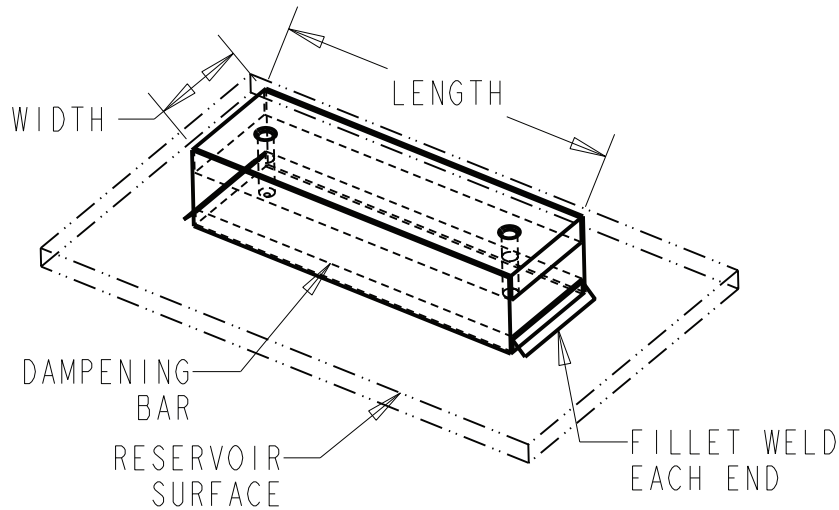
Ph : 920-682-6877
Fx : 920-684-7210



sales@ldi-industries.com
www.ldi-industries.com

APPENDIX RA-4

WELD INSTRUCTIONS FOR DAMPENING BAR



To minimize localized separation of the rubber from the steel bar, welding must be limited to each end along the width of the dampening bar using welding parameters at the upper limits of the manufacturer's recommendations for the filler metal with increased travel speed to reduce overall bead size.

The chart below provides the recommended fillet weld size for our most common dampening bars.

If staining caused by trapped condensation from beneath dampening bars is a concern after painting, caulk the edges not welded with a paintable caulk.

Recommended Fillet Weld Sizes		
Part Number	Description	Weld Fillet Size (inch)
VSM-56-W	Bar Dampening .312-18 4.75	.19
VSM-143-W	Bar Dampening .312-18 5.50	.19
VSM-145-W	Bar Dampening .312-18 6.50	.19
VSM-182-W	Bar Dampening .375-16 6.00	.19
VSM-184-W	Bar Dampening .375-16 7.00	.19
VSM-213-W	Bar Dampening .375-16 7.75	.19
VSM-215-W	Bar Dampening .375-16 9.00	.19
VSM-254-W	Bar Dampening .500-13 10.50	.19
VSM-256-W	Bar Dampening .500-13 12.25	.19
VSM-284-W	Bar Dampening .500-13 12.00	.31
VSM-286-W	Bar Dampening .500-13 13.25	.31
VSM-324-W	Bar Dampening .625-11 12.50	.31
VSM-326-W	Bar Dampening .625-11 14.00	.31
VSM-364-W	Bar Dampening .625-11 13.50	.31
VSM-365-W	Bar Dampening .625-11 14.50	.31
VSM-404-W	Bar Dampening .750-10 15.50	.31
VSM-405-W	Bar Dampening .750-10 17.00	.31
VSM-444-W	Bar Dampening .750-10 19.50	.31
VSM-445-W	Bar Dampening .750-10 21.00	.31

Dimensions and specifications are subject to change without notice. Not all items are Made-To-Stock, contact us for availability.

ES387
02/14

Ph : 920-682-6877
Fx : 920-684-7210



sales@ldi-industries.com
www.ldi-industries.com