

COUPLING & FLANGE CONNECTIONS

SAE COUPLINGS

Our SAE couplings are designed to be welded into a reservoir, terminal bar or inline piping. The SAE tees can reduce the need for multiple fittings.

Standard Features:

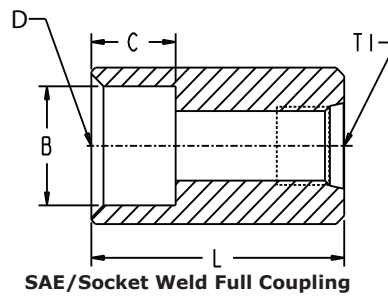
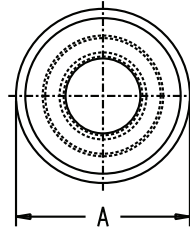
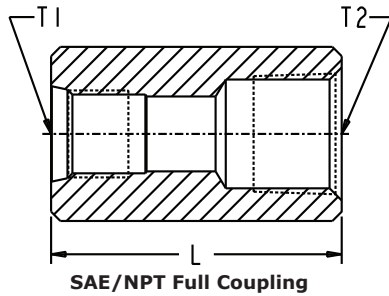
- Provides a o-ring seal to prevent leaks
- Couplings are available in full and half thread
- Full couplings are available in SAE to SAE, SAE to NPT and SAE to Socket Weld
- Tee's are available in reduced branch thread sizes

Standard Materials:

- 1117 CRS
- 316 Stainless Steel

Temperature Ratings:

- Temperature ratings vary by material selection for o-ring tank seal



SAE/NPT FULL COUPLING

SAE/NPT Full Coupling						
Steel Part No.	Stainless Steel Part No.	L Length inches	A Dia inches	T1 SAE Dash Size	T1	T2 (NPTF)
1000	11600	1.875	1.125	-6	9/16-18	1/2-14
1001	11601	1.875	1.125	-8	3/4-16	1/2-14
1002	11602	2.000	1.375	-10	7/8-14	3/4-14
1003	11603	2.000	1.375	-12	1 1/16-12	3/4-14
1005	11605	2.375	1.750	-16	1 5/16-12	1-11 1/2
1006	11606	2.625	2.250	-20	1 5/8-12	1 1/4-11 1/2
1007	11607	3.000	2.500	-24	1 7/8-12	1 1/2-11 1/2
1008	11608	3.375	3.000	-32	2 1/2-12	2-11 1/2

SAE/SOCKET WELD FULL COUPLING

SAE/Socket Weld Full Coupling								
Steel Part No.	Stainless Steel Part No.	L Length inches	A Diameter inches	T1 SAE Dash Size	T1	Port D Socket for Pipe Size (inches)	Dimensions	
							B inches	C inches
1080	—	1.875	1.125	-6	9/16-18	1/2	.855	.625
1081	11681	1.875	1.125	-8	3/4-16	1/2	.855	.625
1083	11683	2.000	1.375	-12	1 1/16-12	3/4	1.065	.750
1085	11685	2.375	1.750	-16	1 5/16-12	1	1.330	1.000
1086	11686	2.625	2.250	-20	1 5/8-12	1 1/4	1.675	1.000
1087	11687	3.000	2.500	-24	1 7/8-12	1 1/2	1.915	1.000
1088	—	3.375	3.250	-32	2 1/2-12	2	2.406	1.250

Dimensions and specifications are subject to change without notice. Not all items are Made-To-Stock, contact us for availability.

02/14

Ph : 920-682-6877
Fx : 920-684-7210



sales@ldi-industries.com
www.ldi-industries.com