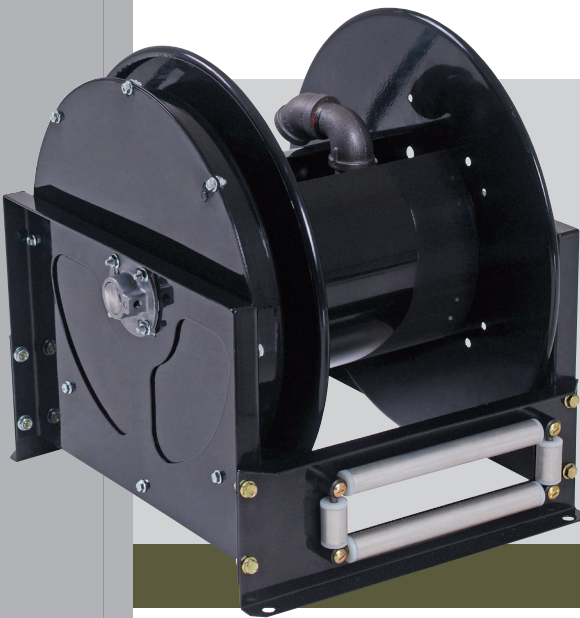


HOSE REELS



Reels available only in standard rf hose payout position.

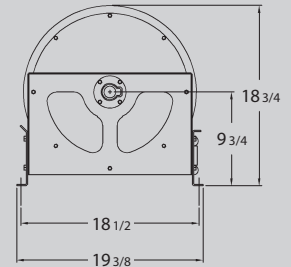
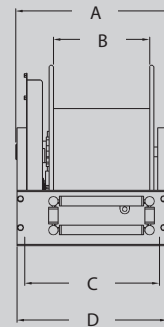
Mounting holes 1/2" dia.

	3/8 & 1	1/2 Dual	3/4 & 1
A	12 1/2	16 1/2	16 1/2
B	6	10	10
C	10	14	14
D	11 5/8	15 5/8	*20

*with swivel installed

Inlet — 1" FPT

Max. Temp. — 200°F



For 3/8", 1/2", 3/4", and 1" Hose I.D.

D Series

Meets requirements for higher volume 3/4 and 1 inch hose applications. Suitable for air, water, oil, diesel fuel and grease where longer lengths of hose are required.

FEATURES

- Safety banded spring in sealed springcase
- Full 1 inch flow path
- Compact design
- Guide rollers allow frictionless retrieval of hose
- Heavy duty spool and frame design

LOW PRESSURE Air, water, solvents

Model Number	Operating Pressure	Hose I.D.	Hose Length	Shipping Weight
LD-300*	1000 PSI	3/8 IN.	—	68#
LD-3100	300 PSI	3/8 IN.	100 FT.	99#
LD-500*	1000 PSI	1/2 IN.	—	68#
LD-575	300 PSI	1/2 IN.	75 FT.	90#
LD-590	300 PSI	1/2 IN.	90 FT.	95#
LD-5100	300 PSI	1/2 IN.	100 FT.	99#
LD-700*	300 PSI	3/4 IN.	—	81#
LD-750	300 PSI	3/4 IN.	50 FT.	95#
LD-770	300 PSI	3/4 IN.	70 FT.	99#
LD-1000*	300 PSI	1 IN.	—	81#
LD-1025	300 PSI	1 IN.	25 FT.	95#
LD-1045	300 PSI	1 IN.	45 FT.	99#

MEDIUM PRESSURE Oils, solvents

MD-500*	4000 PSI	1/2 IN.	—	75#
MD-500* dual	4000 PSI	1/2 IN.	— (50 E.A. Hose) FT.	75#
MD-575	2500 PSI	1/2 IN.	75 FT.	95#
MD-700*	2000 PSI	3/4 IN.	—	75#
MD-750	1500 PSI	3/4 IN.	50 FT.	100#

HIGH PRESSURE Grease, heavy oils

HD-300*	5000 PSI	3/8 IN.	—	70#
HD-375	4000 PSI	3/8 IN.	75 FT.	85#

* D Series Reels must be shipped by truck only

* Models without hose.

