

Series VNR Check Valves

$$Cv = 0.5 - 8.66$$

Check Valves VNR

Ports M5 (10-32 UNF), 1/8", 1/4", 3/8", 1/2", 3/4"



TECHNICAL SPECIFICATIONS

Construction	Poppet type
Mounting	In-line
Materials	Nickel-plated brass body, Brass body, Buna-N seals, Polyurethane seals, Stainless steel spring
Port sizes	M5 (10-32 UNF), 1/8", 1/4", 3/8", 1/2" NPTF;
Installation	In-line
Operating temperature	32°F - 175°F, (dry air necessary down to -4°F)
Fluid	Filtered air
Lubricant	Oil compatible with Buna-N, (3° - 10° E)

PNEUMATIC DATA

Operating pressure	0.2 - 10 bar (3 - 145 psi)
Nominal pressure	6 bar (87 psi)
Nominal flow	*Qn Series VNR: M5 = 50NL/Min. (1.7 SCFM); 1/8" = 600 NL/min. (21.18 SCFM) 1/4" = 1400 NL/min. (49.44 SCFM)
Lubricant	not required
Cv	M5 = .16; 1/8" = .63; 1/4" = 1.47

*Qn flowrate (SCFM) determined with a supply pressure of 6 bar, (87 psi), and with a pressure drop of 1 bar, (14.5 psi).

***Dimensions are in millimeters.

Check Valves

The check valves in the VNR Series are available with M5 (10-32 UNF), 1/8" and 1/4" ports. They must be used when it is required to intercept a flow in one direction only. The design of these valves is of the poppet type and this feature allows operation at low pressures both when there is a free flow and during retention.

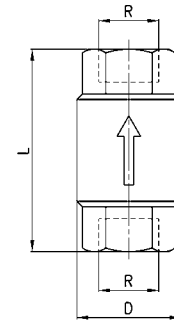
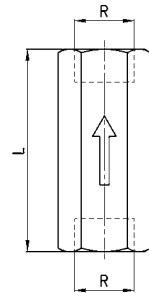
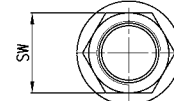
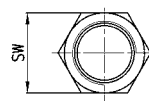
Materials used:

- OT58 (brass) body, Nickel Plated (1/4")
- Buna-N seals
- stainless steel spring
- internals brass



M5- 1/8- 1/4

3/8- 1/2- 3/4



VNR-205-M5

$Q_{n^{**}}$ = 50 NL/min Minimum operating pressure = 1 bar (14.5 psi)

VNR-210-02

Q_n^* = 600 NL/min Minimum operating pressure = 0.2 bar (2.9 psi)

VNR-843-07TF

Q_n^* = 1400 NL/min Minimum operating pressure = 0.2 bar (2.9 psi)

* Q_n = determined with 6 bar and D_p = 1 bar

** Q_n = determined with 6 bar and D_p = 2 bar



VNR1

DIMENSIONS in millimeters (mm)

Mod.	R NPTF	L	SW	D	Q (NL/min), (SCFM)	P min (bar)
VNR-205-M5	M5	25	8	9	50 (1.75)	1
VNR-210-02	1/8	34	13	15	600 (21.18)	0,2
VNR-843-07TF	1/4	43	17	20	1400 (49.44)	0,2
VNR-238-06	3/8	55	23	34,5	3000 (105)	0,02
VNR-212-08	1/2	58,5	27	34,5	5800 (203)	0,02
VNR-234-12	3/4	65	33	41,5	8000 (280)	0,06