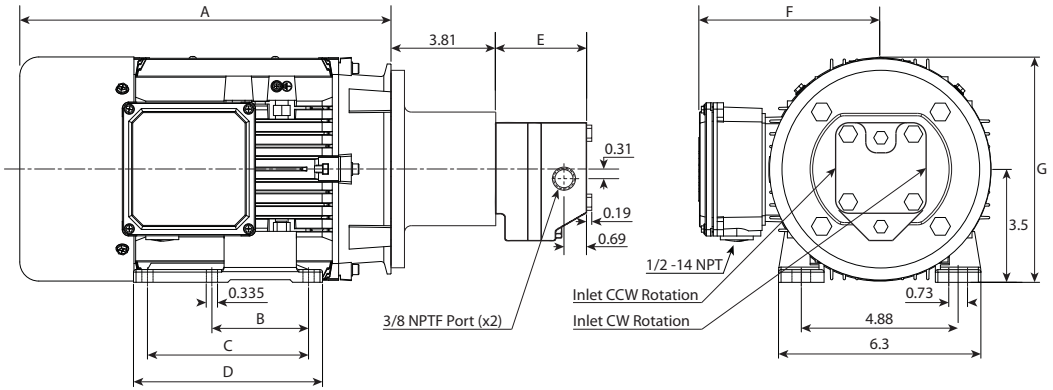
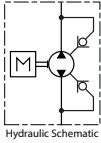


## Pump & Motor Combinations - "C" Series - Three Phase

All "C" Series pump/motor units are bi-directional. The precision alignment of the motor to "C" series pump is assured by a machined adaptor bracket. The 1/2 to 1-1/2 horsepower electric motors are 56 frame, continuous duty, ball-bearing, totally enclosed, fan cooled units (TEFC) of the highest quality. The motors are inverter rated three phase, 1800 RPM, 208-230/460 Volt 60 Hz (50 Hz capable).

### Specifications

- High Strength Cast Iron Body Pumps
- Bi-Directional Pumps, 3/8" NPTF Ports
- Fixed Clearance Pumps
- Precision Machined Internal Trapping Grooves
- Hardened Alloy Gears & Shafts
- Lead Bronze Sleeve Bearings
- Buna-N Seals & O-Rings
- Integral Check Valves For Bi-Directional Use



Stock Number	Mfr. Number	H.P.	In3 Per Rev.	GPM	Max PSI Continuous	FL Amps 230V	FL Amps 460V	A	B	C	D	E	F	G	Ship Wt.
9505203	C1+C354	0.50	0.065	0.50	1700	1.80	0.90	9.44"	3.00"	N/A	3.95"	2.48"	5.20"	6.65"	36
9505207	C1+C374	0.75	0.065	0.50	2500	2.50	1.25	9.44"	3.00"	N/A	3.95"	2.48"	5.20"	6.65"	40
9505211	C2+C354	0.50	0.108	0.84	1000	1.80	0.90	9.44"	3.00"	N/A	3.95"	2.57"	5.20"	6.65"	36
9505215	C2+C374	0.75	0.108	0.84	1500	2.50	1.25	9.44"	3.00"	N/A	3.95"	2.57"	5.20"	6.65"	40
9505219	C2+C3104	1.00	0.108	0.84	2000	3.18	1.59	9.44"	3.00"	N/A	3.95"	2.57"	5.20"	6.65"	44
9505223	C4+C354	0.50	0.187	1.46	580	1.80	0.90	9.44"	3.00"	N/A	3.95"	2.74"	5.20"	6.65"	36
9505227	C4+C374	0.75	0.187	1.46	880	2.50	1.25	9.44"	3.00"	N/A	3.95"	2.74"	5.20"	6.65"	40
9505231	C4+C3104	1.00	0.187	1.46	1170	3.18	1.59	9.44"	3.00"	N/A	3.95"	2.74"	5.20"	6.65"	44
9505235	C4+C3154	1.50	0.187	1.46	1760	4.26	2.13	11.54"	3.00"	5.00"	5.90"	2.74"	5.65"	7.00"	54
9505239	C6+C354	0.50	0.316	2.46	350	1.80	0.90	9.44"	3.00"	N/A	3.95"	3.02"	5.20"	6.65"	36
9505243	C6+C374	0.75	0.316	2.46	520	2.50	1.25	9.44"	3.00"	N/A	3.95"	3.02"	5.20"	6.65"	40
9505246	C6+C3104	1.00	0.316	2.46	700	3.18	1.59	9.44"	3.00"	N/A	3.95"	3.02"	5.20"	6.65"	44
9505249	C6+C3154	1.50	0.316	2.46	1040	4.26	2.13	11.54"	3.00"	5.00"	5.90"	3.02"	5.65"	7.00"	54
9505253	C8+C354	0.50	0.468	3.64	230	1.80	0.90	9.44"	3.00"	N/A	3.95"	3.34"	5.20"	6.65"	36
9505257	C8+C374	0.75	0.468	3.64	350	2.50	1.25	9.44"	3.00"	N/A	3.95"	3.34"	5.20"	6.65"	40
9505261	C8+C3104	1.00	0.468	3.64	470	3.18	1.59	9.44"	3.00"	N/A	3.95"	3.34"	5.20"	6.65"	44
9505265	C8+C3154	1.50	0.468	3.64	700	4.26	2.13	11.54"	3.00"	5.00"	5.90"	3.34"	5.65"	7.00"	54