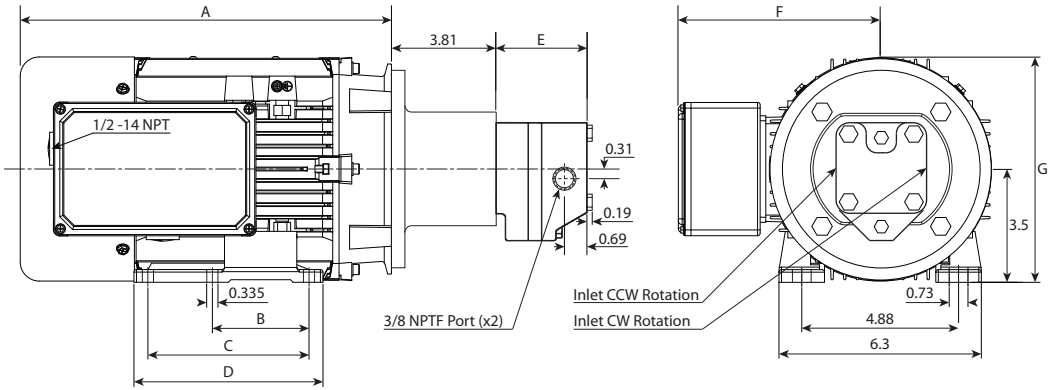
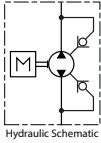


Pump & Motor Combinations - "C" Series - Single Phase

All "C" Series pump/motor units are bi-directional. The precision alignment of the motor to "C" series pump is assured by a machined adaptor bracket. The 1/2 to 1-1/2 horsepower electric motors are 56 frame, continuous duty, ball-bearing, totally enclosed, fan cooled units (TEFC) of the highest quality. The motors are dual voltage single phase, 1800 RPM, 115/230 Volts.

Specifications

- High Strength Cast Iron Body Pumps
- Bi-Directional Pumps, 3/8" NPTF Ports
- Fixed Clearance Pumps
- Precision Machined Internal Trapping Grooves
- Hardened Alloy Gears & Shafts
- Leaded Bronze Sleeve Bearings
- Buna-N Seals & O-Rings
- Integral Check Valves For Bi-Directional Use



Stock Number	Mfr. Number	H.P.	In3 Per Rev.	GPM	Max PSI Continuous	FL Amps 115V	FL Amps 230V	A	B	C	D	E	F	G	Ship Wt.
9505201	C1+C154	0.50	0.065	0.50	1700	4.75	2.37	9.44"	3.00"	N/A	3.95"	2.48"	5.73"	6.75"	44
9505205	C1+C174	0.75	0.065	0.50	2500	6.77	3.38	9.44"	3.00"	N/A	3.95"	2.48"	5.73"	6.75"	48
9505209	C2+C154	0.50	0.108	0.84	1000	4.75	2.37	9.44"	3.00"	N/A	3.95"	2.57"	5.73"	6.75"	44
9505213	C2+C174	0.75	0.108	0.84	1500	6.77	3.38	9.44"	3.00"	N/A	3.95"	2.57"	5.73"	6.75"	48
9505217	C2+C1104	1.00	0.108	0.84	2000	9.06	4.53	9.44"	3.00"	N/A	3.95"	2.57"	5.73"	6.75"	52
9505221	C4+C154	0.50	0.187	1.46	580	4.75	2.37	9.44"	3.00"	N/A	3.95"	2.74"	5.73"	6.75"	44
9505225	C4+C174	0.75	0.187	1.46	880	6.77	3.38	9.44"	3.00"	N/A	3.95"	2.74"	5.73"	6.75"	48
9505229	C4+C1104	1.00	0.187	1.46	1170	9.06	4.53	9.44"	3.00"	N/A	3.95"	2.74"	5.73"	6.75"	52
9505233	C4+C1154	1.50	0.187	1.46	1760	13.00	6.52	11.54"	3.00"	5.00"	5.90"	2.74"	6.16"	7.00"	60
9505237	C6+C154	0.50	0.316	2.46	350	4.75	2.37	9.44"	3.00"	N/A	3.95"	3.02"	5.73"	6.75"	44
9505241	C6+C174	0.75	0.316	2.46	520	6.77	3.38	9.44"	3.00"	N/A	3.95"	3.02"	5.73"	6.75"	48
9505245	C6+C1104	1.00	0.316	2.46	700	9.06	4.53	9.44"	3.00"	N/A	3.95"	3.02"	5.73"	6.75"	52
9505247	C6+C1154	1.50	0.316	2.46	1040	13.00	6.52	11.54"	3.00"	5.00"	5.90"	3.02"	6.16"	7.00"	60
9505251	C8+C154	0.50	0.468	3.64	230	4.75	2.37	9.44"	3.00"	N/A	3.95"	3.34"	5.73"	6.75"	44
9505255	C8+C174	0.75	0.468	3.64	350	6.77	3.38	9.44"	3.00"	N/A	3.95"	3.34"	5.73"	6.75"	48
9505259	C8+C1104	1.00	0.468	3.64	470	9.06	4.53	9.44"	3.00"	N/A	3.95"	3.34"	5.73"	6.75"	52
9505263	C8+C1154	1.50	0.468	3.64	700	13.00	6.52	11.54"	3.00"	5.00"	5.90"	3.34"	6.16"	7.00"	60