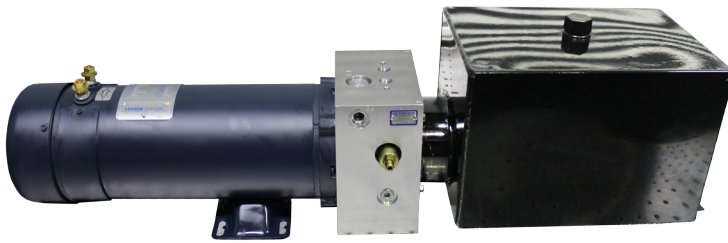


# 12 VDC Power Unit

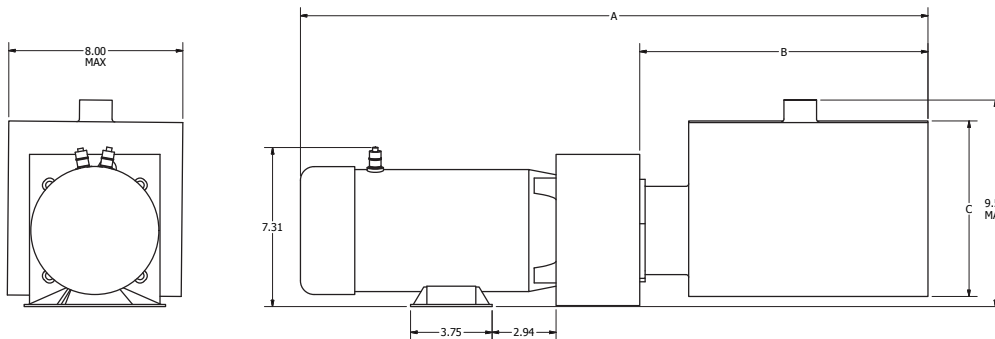
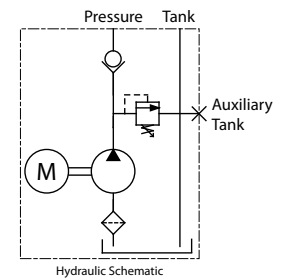
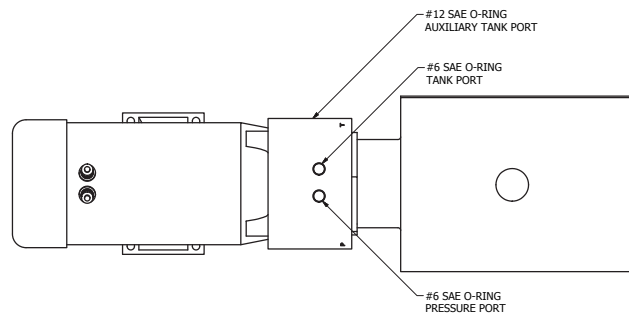
*Pressure & Tank*

## Technical Information



- Continuous Duty
- 1 HP
- 12 VDC
- CW Rotation
- Relief Valve Set at 3000 PSI
- #6 SAE O-Ring Pressure & Tank Ports
- #12 SAE O-Ring Auxiliary Tank Port
- Steel Tank
- Tank is Painted Black

| Item Number | HP   | Flow     | Maximum Pressure | Voltage | Amps | Maximum RPM | Tank Capacity      | Dim. A | Dim. B | Dim. C         | Weight |
|-------------|------|----------|------------------|---------|------|-------------|--------------------|--------|--------|----------------|--------|
| 9505008     | 1 HP | 0.46 GPM | 3000 PSI         | 12 VDC  | 80 A | 1800        | 1 Gallon Round     | 24.6"  | 9.0"   | 6.63" DIAMETER | 63 lbs |
| 9505016     | 1 HP | 0.46 GPM | 3000 PSI         | 12 VDC  | 80 A | 1800        | 1.5 Gallons Round  | 29.1"  | 13.5"  | 6.63" DIAMETER | 64 lbs |
| 9505024     | 1 HP | 0.46 GPM | 3000 PSI         | 12 VDC  | 80 A | 1800        | 2.5 Gallons Square | 28.85" | 13.25" | 8.0" SQUARE    | 70 lbs |
| 9505032     | 1 HP | 0.46 GPM | 3000 PSI         | 12 VDC  | 80 A | 1800        | 3.5 Gallons Square | 33.48" | 17.88" | 8.0" SQUARE    | 73 lbs |



FOOT MOUNTING BRACKET