

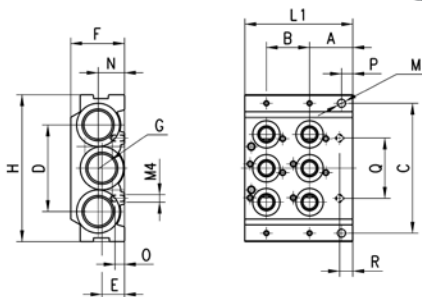
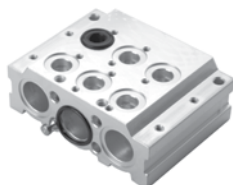
Manifold Segments for Series 3, 1/8" and 1/4" valves (All mounting hardware & seals come with each manifold segment)

Accessories - manifold segments and adaptor plates - 1/2" common inlet & exhaust

Terminal module 2 positions.

The following is supplied:

- 3x O-Rings
- 2x fixing nuts
- 2x junction plugs
- 6x interface seals
- 4x fixing screws



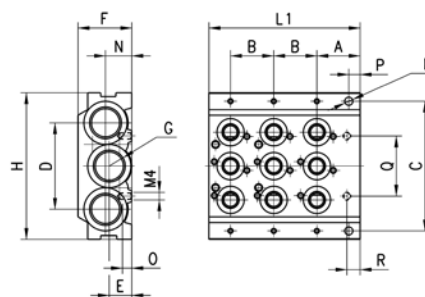
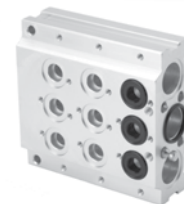
(to be used as a last station on manifold assembly)

DIMENSIONS																
Mod.	Series	A	B	C	D	E	F	H	L1	M	N	O	P	Q	R	G
CNVL-3H2TF	3 - 1/8"	23	23	69.5	46	12	29	78	57.5	4.3	14	5	6	32	7	3/8
CNVL-4H2TF	3 - 1/4"	26	26	88	60	14	29	98	65	4.3	-	5	5	38	7	1/2

Terminal module 3 positions.

The following is supplied:

- 3x O-Rings
- 2x fixing nuts
- 2x junction plugs
- 9x interface seals
- 6x fixing screws



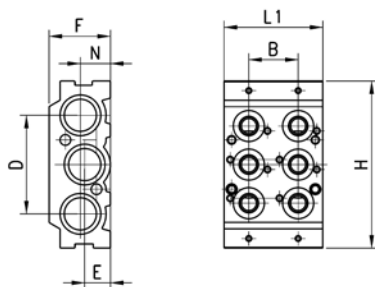
(to be used as a last station on manifold assembly)

DIMENSIONS																
Mod.	Series	A	B	C	D	E	F	H	L1	M	N	O	P	Q	R	G
CNVL-3H3TF	3 - 1/8"	23	23	69.5	46	12	29	78	80.5	4.3	14	5	6	32	7	3/8
CNVL-4H3TF	3 - 1/4"	26	26	88	60	14	29	98	91	4.3	-	5	5	38	7	1/2

Expansion module 2 positions.

The following is supplied:

- 3x O-Rings
- 2x fixing nuts
- 2x junction plugs
- 6x interface seals
- 4x fixing screws



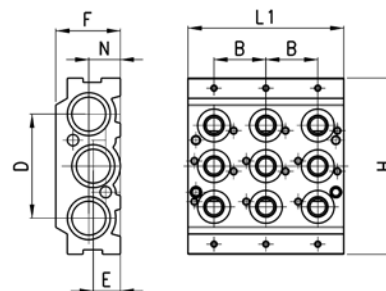
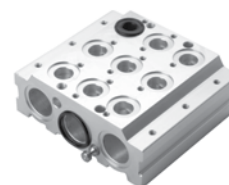
(to be used as an intermediate station on manifold assembly)

DIMENSIONS								
Mod.	Series	B	D	E	F	H	L1	N
CNVL-3I2	3 - 1/8"	23	46	12	29	78	46	14
CNVL-4I2	3 - 1/4"	26	60	14	29	98	52	-

Expansion module 3 positions. The

following is supplied:

- 3x O-Rings
- 2x fixing nuts
- 2x junction plugs
- 9x interface seals
- 6x fixing screws



(to be used as an intermediate station on manifold assembly)

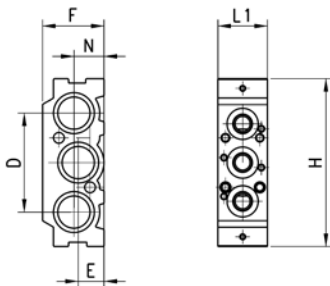
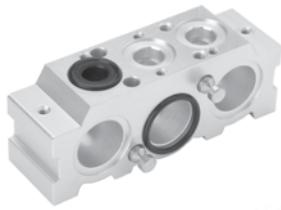
DIMENSIONS								
Mod.	Series	B	D	E	F	H	L1	N
CNVL-3I3	3 - 1/8"	23	46	12	29	78	69	14
CNVL-4I3	3 - 1/4"	26	60	14	29	98	65	-

Manifold Segments for Series 3, 1/8" and 1/4" valves (All mounting hardware & seals come with each manifold segment)

Accessories - manifold segments and adaptor plates

Expansion module 1 position The following is supplied:

- 3x O-Rings
- 2x fixing nuts
- 2x junction plugs
- 3x interface seals
- 2x fixing seals

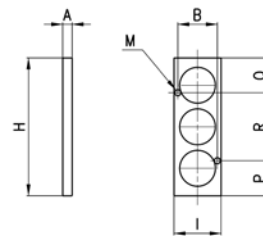


DIMENSIONS							
Mod.	Series	D	E	F	H	L1	N
CNVL-311	3 - 1/8"	46	12	29	78	23	14
CNVL-411	3 - 1/4"	60	14	29	98	26	-

Blanking plate for sub-base.

The item is used to blank one or more stations on a manifold base Mod.CNVL..., The following is supplied:

- 2x fixing screws
- 3x O-Rings

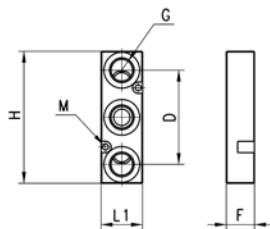


DIMENSIONS									
Mod.	Series	A	B	H	I	M	P	Q	R
CNVL-1	3 - 1/8"	5	17.4	52	22	3.2	10.3	10.3	31.4
CNVL-4	3 - 1/4"	5	21	73	25	3.2	18.5	18.5	36

Intermediate plate for manifolds.

The following is supplied:

- 3x O-Rings
- 2x fixing screws



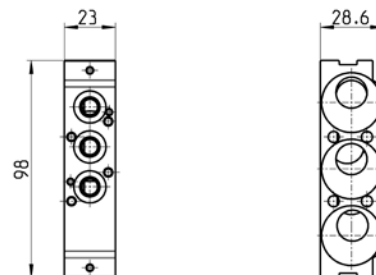
(to be used to create threaded ports on manifold station instead of valve interface)

DIMENSIONS								
Mod.	Series	G	H	M	F	L1	D	F
CNVL-3PTF	3 - 1/8"	1/4	70	3.2	29	22	50	15
CNVL-4PTF	3 - 1/4"	1/4	73	3.2	29	25	50	20

Interface plate between 358 and 354.

The following is supplied:

- 1x interface seal
- 2x screws
- 2x pins
- 2x plugs
- 6x O-Rings



DIMENSIONS	
Mod.	
CNVL-4H-3HTF	